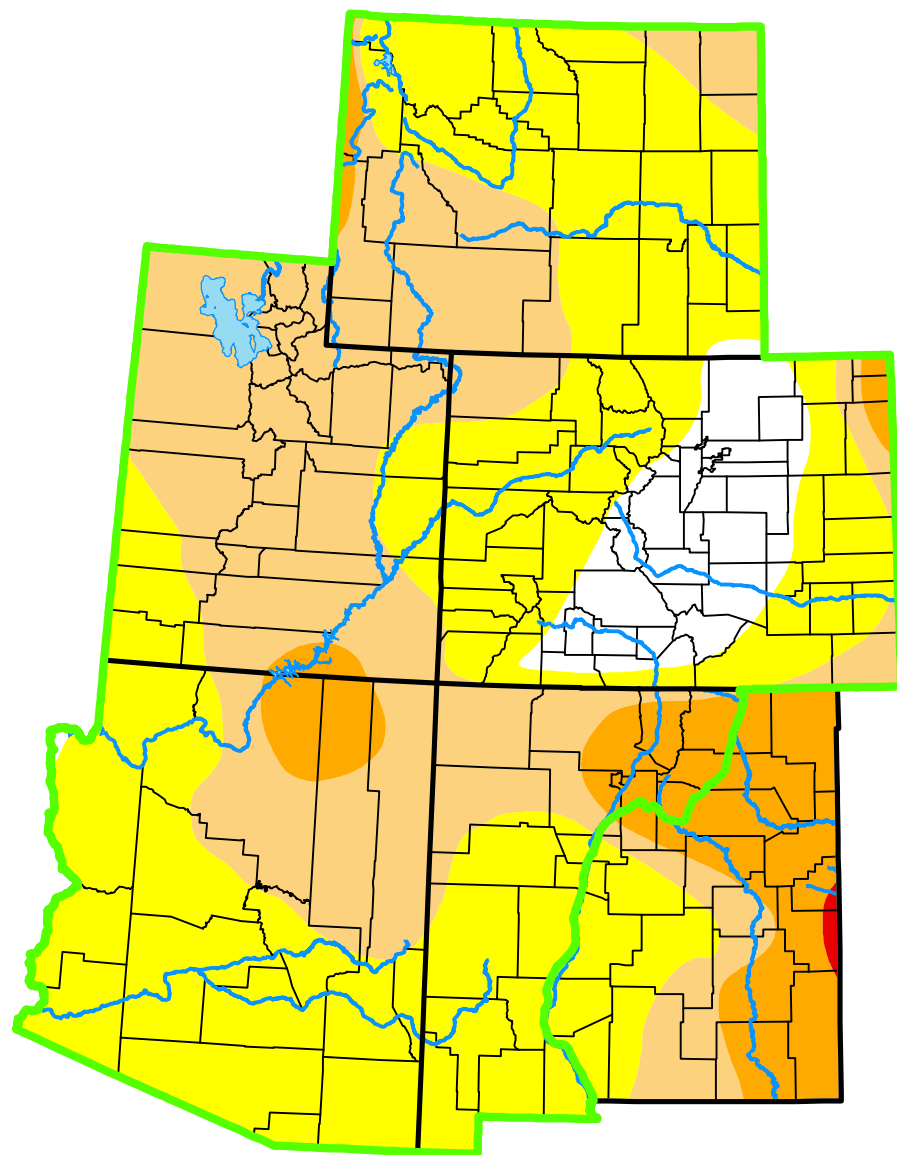


# U.S. Drought Monitor

## Intermountain West DEWS and Surrounding Areas



**October 10, 2000**

*(Released Thursday, Oct. 12, 2000)*

Valid 8 a.m. EDT

*Drought Conditions (Percent Area)*

	None	D0-D4	D1-D4	D2-D4	D3-D4	D4
<b>Current</b>	8.01	91.99	39.70	5.06	0.00	0.00
<b>Last Week</b> <i>10-03-2000</i>	8.01	91.99	40.15	3.09	0.00	0.00
<b>3 Months Ago</b> <i>07-11-2000</i>	15.54	84.46	22.33	0.75	0.01	0.00
<b>Start of Calendar Year</b> <i>01-04-2000</i>	78.99	21.01	0.00	0.00	0.00	0.00
<b>Start of Water Year</b> <i>09-26-2000</i>	14.68	85.32	30.08	2.02	0.00	0.00
<b>One Year Ago</b> <i>01-01-1900</i>	-	-	-	-	-	-

(Statistics for area highlighted in green)

**Intensity:**

None	D2 Severe Drought
D0 Abnormally Dry	D3 Extreme Drought
D1 Moderate Drought	D4 Exceptional Drought

*The Drought Monitor focuses on broad-scale conditions. Local conditions may vary. For more information on the Drought Monitor, go to <https://droughtmonitor.unl.edu/About.aspx>*

**Author:**

Staff None

National Drought Mitigation Center



**droughtmonitor.unl.edu**