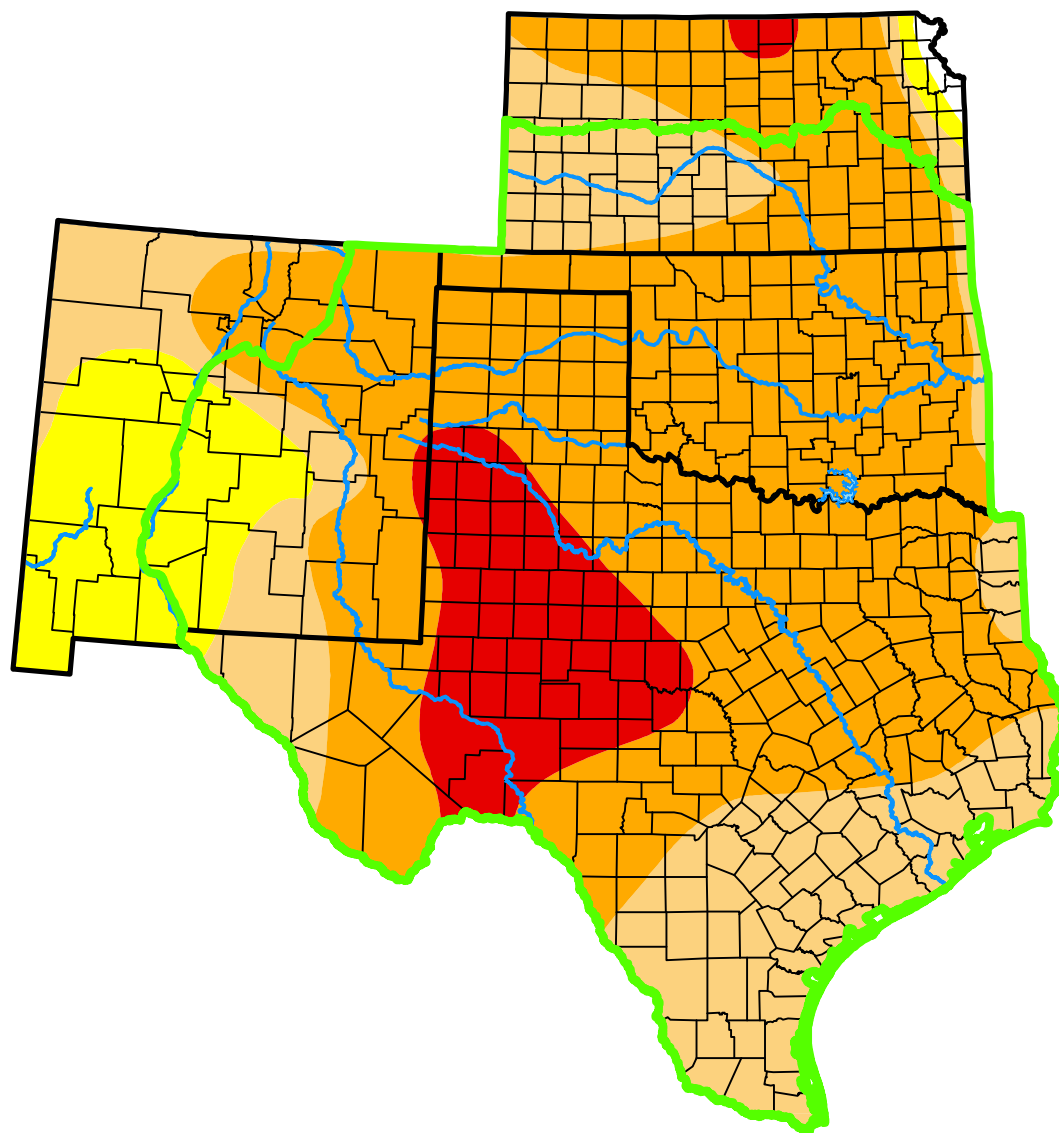


*U.S. Drought Monitor*

# Southern Plains DEWS and Surrounding Areas

**October 10, 2000**  
(Released Thursday, Oct. 12, 2000)  
Valid 8 a.m. EDT



*Intensity:*

-  None
-  D0 Abnormally Dry
-  D1 Moderate Drought
-  D2 Severe Drought
-  D3 Extreme Drought
-  D4 Exceptional Drought

*The Drought Monitor focuses on broad-scale conditions. Local conditions may vary. For more information on the Drought Monitor, go to <https://droughtmonitor.unl.edu/About.aspx>*

*Author:*

Staff None  
National Drought Mitigation Center



**droughtmonitor.unl.edu**