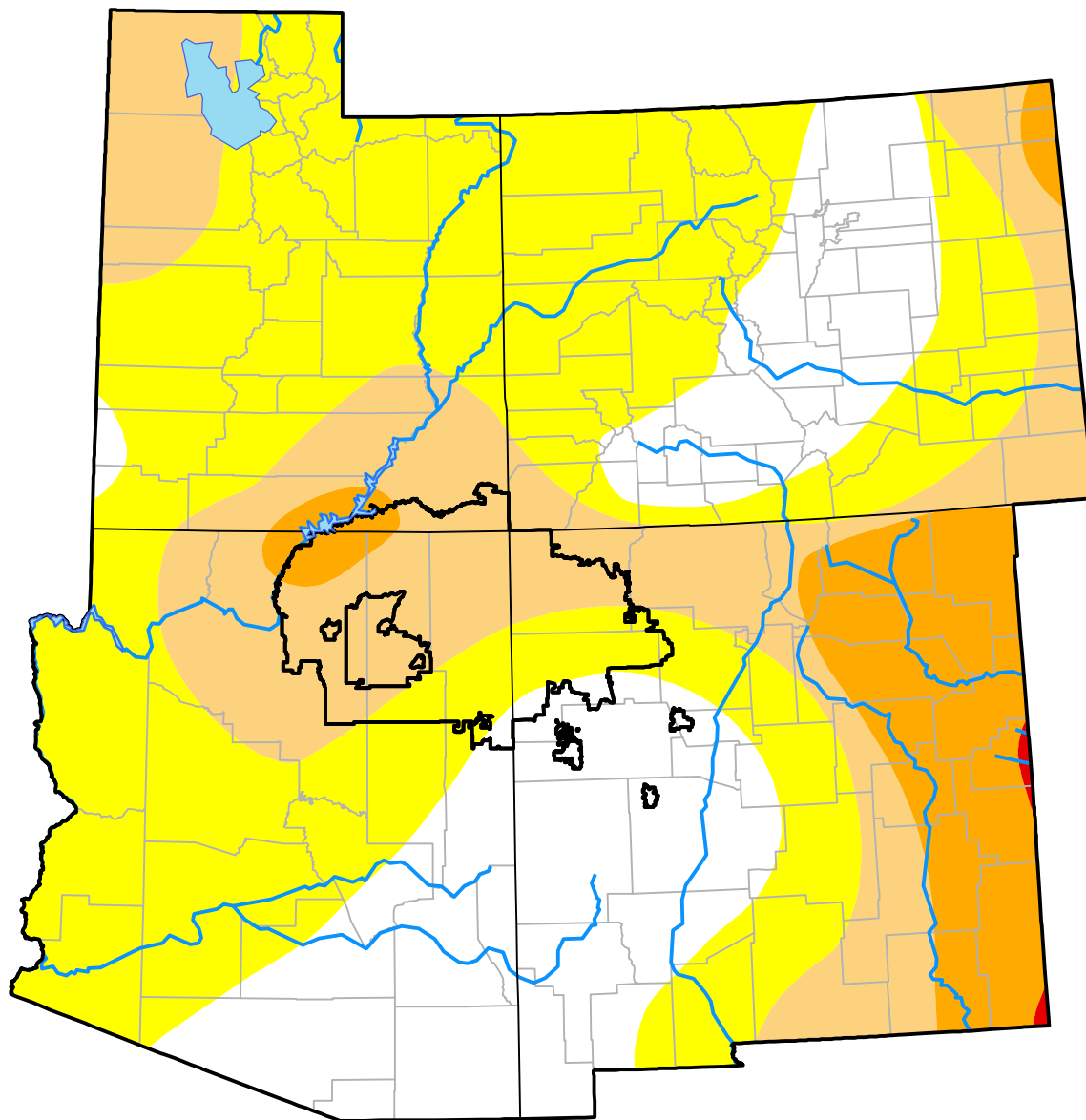


U.S. Drought Monitor

Navajo RDEWS

October 17, 2000
(Released Thursday, Oct. 19, 2000)
 Valid 8 a.m. EDT



Drought Conditions (Percent Area)

| | None | D0 | D1 | D2 | D3 | D4 |
|--|-------|-------|-------|-------|------|------|
| Current | 6.27 | 29.61 | 56.09 | 8.02 | 0.00 | 0.00 |
| Last Week <i>10-12-2000</i> | 0.00 | 2.34 | 72.82 | 24.83 | 0.00 | 0.00 |
| 3 Months Ago <i>07-20-2000</i> | 0.00 | 87.02 | 12.98 | 0.00 | 0.00 | 0.00 |
| Start of Calendar Year <i>01-06-2000</i> | 97.21 | 2.79 | 0.00 | 0.00 | 0.00 | 0.00 |
| Start of Water Year <i>09-28-2000</i> | 0.03 | 49.76 | 38.20 | 12.01 | 0.00 | 0.00 |
| One Year Ago | - | - | - | - | - | - |

Intensity:

| | |
|---------------------|------------------------|
| None | D2 Severe Drought |
| D0 Abnormally Dry | D3 Extreme Drought |
| D1 Moderate Drought | D4 Exceptional Drought |

The Drought Monitor focuses on broad-scale conditions. Local conditions may vary. For more information on the Drought Monitor, go to <https://droughtmonitor.unl.edu/About.aspx>

Author:

Staff None
 National Drought Mitigation Center



droughtmonitor.unl.edu