

U.S. Drought Monitor

Four Corners RDEWS

October 24, 2000

(Released Thursday, Oct. 26, 2000)

Valid 8 a.m. EDT

Drought Conditions (Percent Area)

	None	D0-D4	D1-D4	D2-D4	D3-D4	D4
Current	14.20	85.80	58.20	0.58	0.00	0.00
Last Week <i>10-19-2000</i>	11.00	89.00	63.12	6.37	0.00	0.00
3 Months Ago <i>07-27-2000</i>	0.00	100.00	32.33	0.00	0.00	0.00
Start of Calendar Year <i>01-06-2000</i>	96.09	3.91	0.00	0.00	0.00	0.00
Start of Water Year <i>09-28-2000</i>	0.05	99.95	44.68	9.00	0.00	0.00
One Year Ago	-	-	-	-	-	-

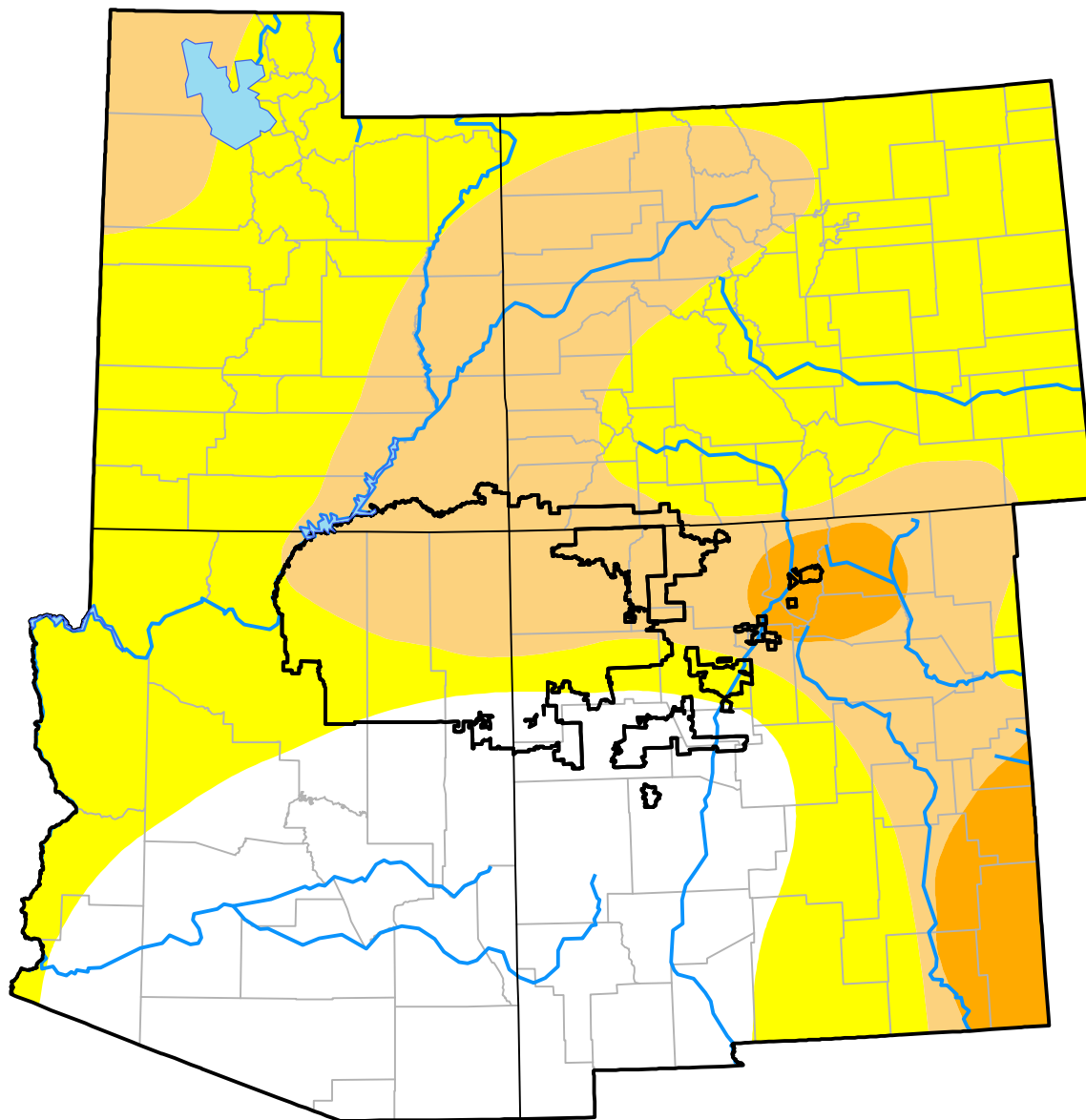
Intensity:

 None	 D2 Severe Drought
 D0 Abnormally Dry	 D3 Extreme Drought
 D1 Moderate Drought	 D4 Exceptional Drought

The Drought Monitor focuses on broad-scale conditions. Local conditions may vary. For more information on the Drought Monitor, go to <https://droughtmonitor.unl.edu/About.aspx>

Author:

Staff None
National Drought Mitigation Center



droughtmonitor.unl.edu