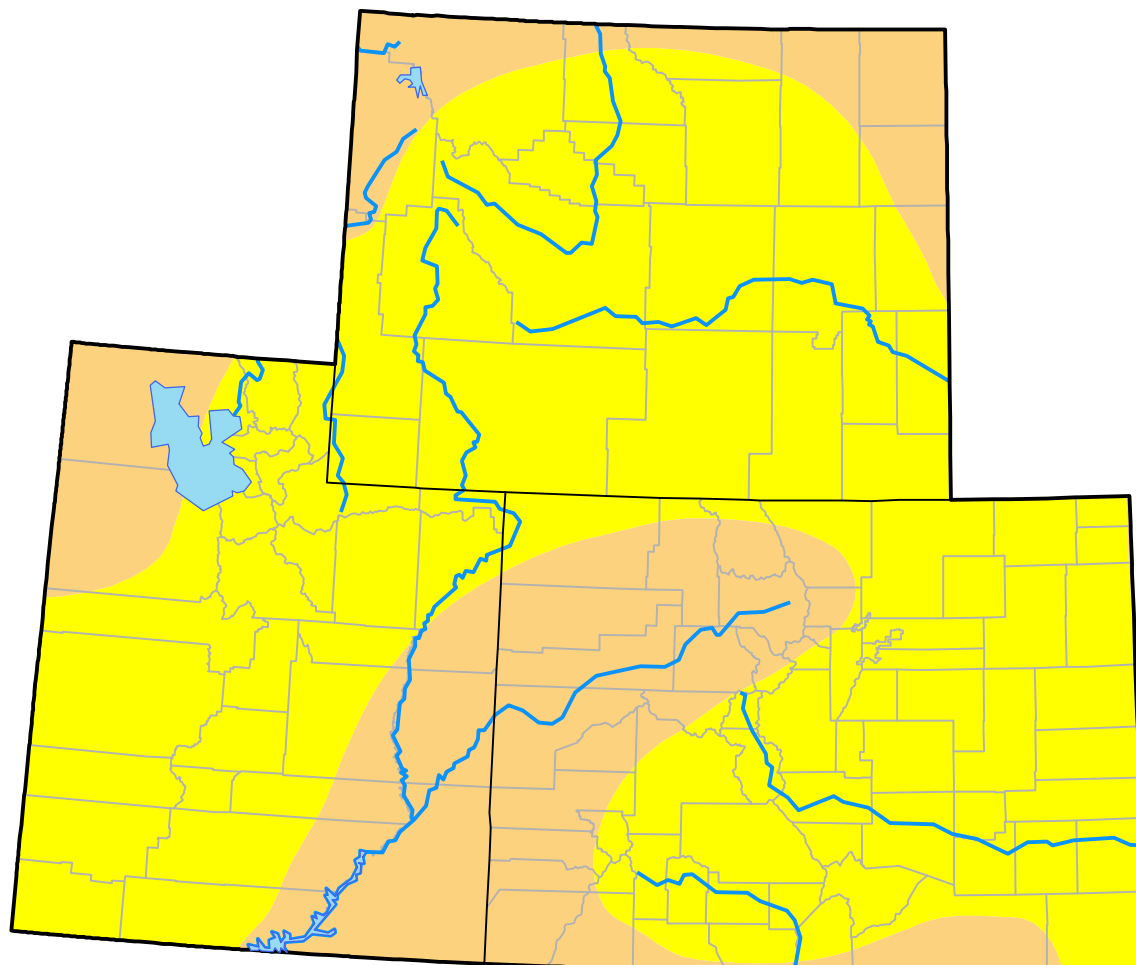


Drought Conditions (Percent Area)

	None	D0	D1	D2	D3	D4
<b>Current</b>	0.00	71.31	28.69	0.00	0.00	0.00
<b>Last Week</b> <i>10-19-2000</i>	11.58	70.38	16.83	1.20	0.00	0.00
<b>3 Months Ago</b> <i>07-27-2000</i>	6.61	71.13	21.46	0.80	0.00	0.00
<b>Start of Calendar Year</b> <i>01-06-2000</i>	98.84	1.16	0.00	0.00	0.00	0.00
<b>Start of Water Year</b> <i>09-28-2000</i>	10.69	48.94	38.18	2.20	0.00	0.00
<b>One Year Ago</b>	-	-	-	-	-	-



Intensity:

None	D2 Severe Drought
D0 Abnormally Dry	D3 Extreme Drought
D1 Moderate Drought	D4 Exceptional Drought

The Drought Monitor focuses on broad-scale conditions. Local conditions may vary. For more information on the Drought Monitor, go to <https://droughtmonitor.unl.edu/About.aspx>

Author:

Staff None  
National Drought Mitigation Center

