

U.S. Drought Monitor

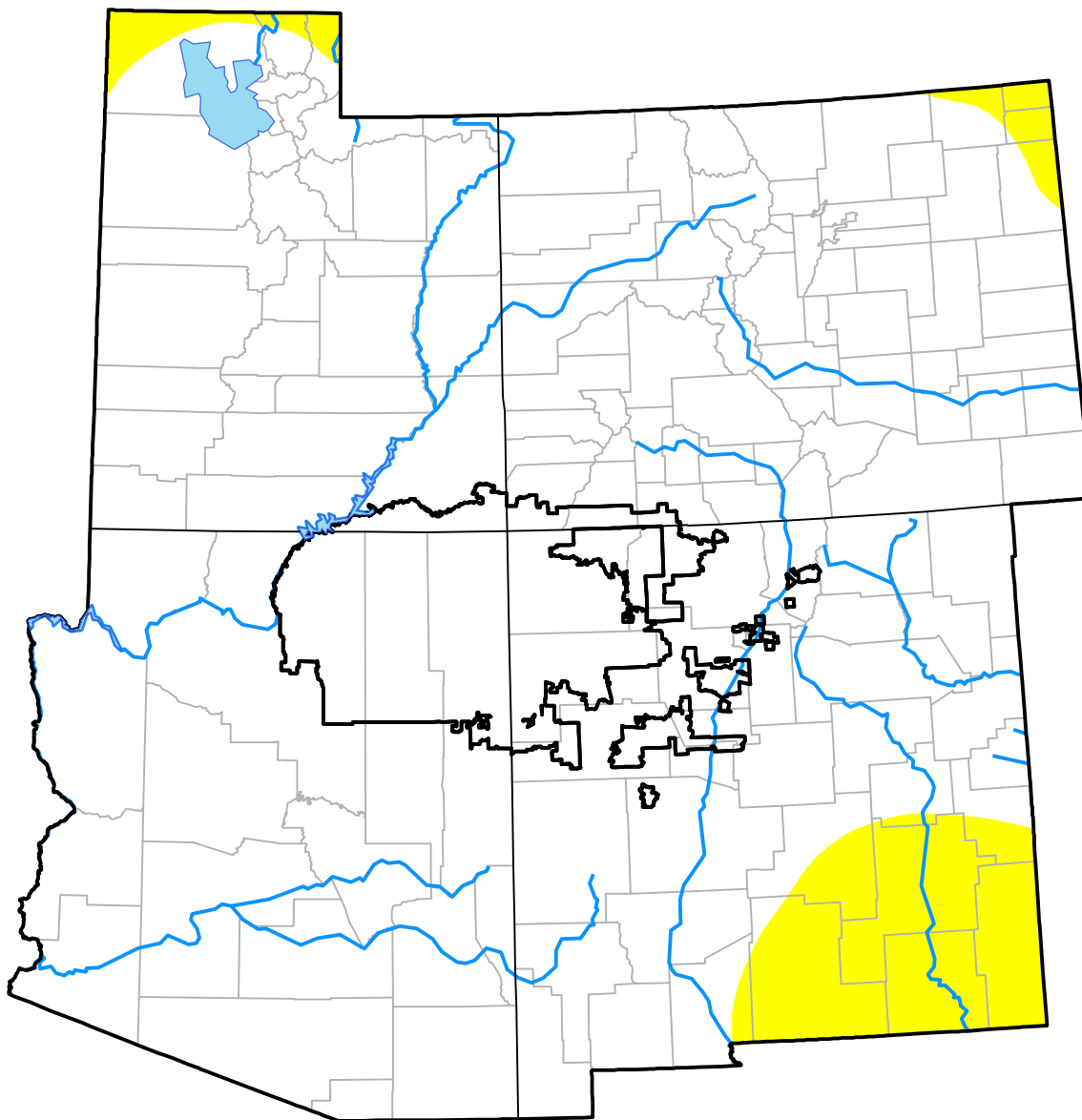
Four Corners RDEWS

March 13, 2001
 (Released Thursday, Mar. 15, 2001)

Valid 7 a.m. EST

Drought Conditions (Percent Area)

	None	D0-D4	D1-D4	D2-D4	D3-D4	D4
Current	100.00	0.00	0.00	0.00	0.00	0.00
Last Week <i>03-08-2001</i>	100.00	0.00	0.00	0.00	0.00	0.00
3 Months Ago <i>12-14-2000</i>	97.34	2.66	0.00	0.00	0.00	0.00
Start of Calendar Year <i>01-04-2001</i>	99.75	0.25	0.00	0.00	0.00	0.00
Start of Water Year <i>09-28-2000</i>	0.05	99.95	44.68	9.00	0.00	0.00
One Year Ago <i>03-16-2000</i>	52.40	47.60	0.00	0.00	0.00	0.00



Intensity:

- None
- D0 Abnormally Dry
- D1 Moderate Drought
- D2 Severe Drought
- D3 Extreme Drought
- D4 Exceptional Drought

The Drought Monitor focuses on broad-scale conditions. Local conditions may vary. For more information on the Drought Monitor, go to <https://droughtmonitor.unl.edu/About.aspx>

Author:

Michael Hayes
 National Drought Mitigation Center

