

# U.S. Drought Monitor

## Wind River and Surrounding Area

**May 8, 2001**

(Released Thursday, May. 10, 2001)

Valid 8 a.m. EDT

*Drought Conditions (Percent Area)*

	None	D0-D4	D1-D4	D2-D4	D3-D4	D4
<b>Current</b>	0.00	0.00	0.00	0.00	0.00	0.00
<b>Last Week</b> <i>05-03-2001</i>	0.00	0.00	0.00	0.00	0.00	0.00
<b>3 Months Ago</b> <i>02-08-2001</i>	0.00	0.00	0.00	0.00	0.00	0.00
<b>Start of Calendar Year</b> <i>01-04-2001</i>	0.00	0.00	0.00	0.00	0.00	0.00
<b>Start of Water Year</b> <i>09-28-2000</i>	0.00	0.00	0.00	0.00	0.00	0.00
<b>One Year Ago</b> <i>05-11-2000</i>	0.00	0.00	0.00	0.00	0.00	0.00

*Note: Statistics are for the surrounding area including the reservation.*

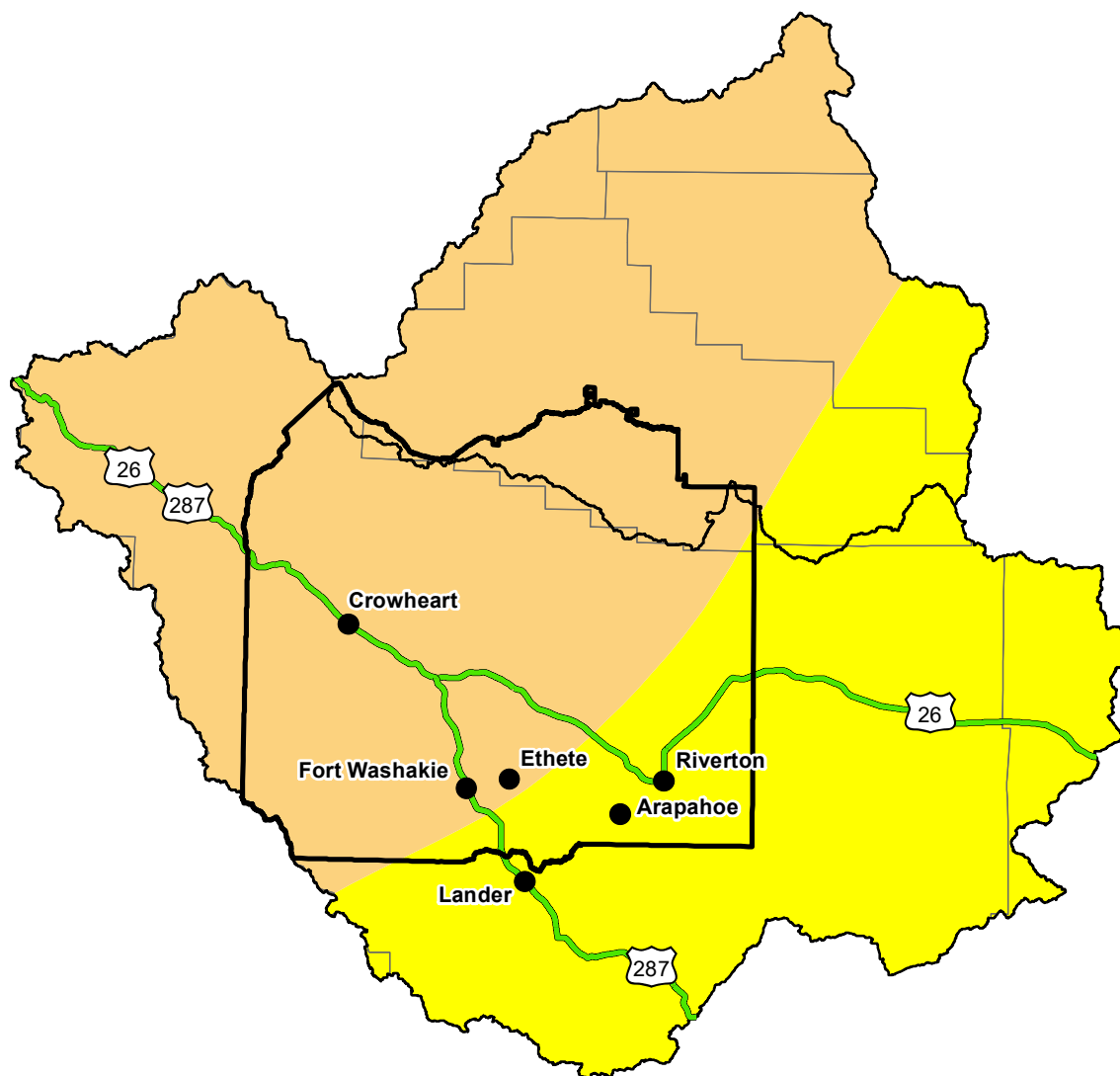
### Intensity:

 None	 D2 Severe Drought
 D0 Abnormally Dry	 D3 Extreme Drought
 D1 Moderate Drought	 D4 Exceptional Drought

*The Drought Monitor focuses on broad-scale conditions. Local conditions may vary. For more information on the Drought Monitor, go to <https://droughtmonitor.unl.edu/About.aspx>*

### Author:

Richard Tinker  
CPC/NOAA/NWS/NCEP



<http://droughtmonitor.unl.edu/>