

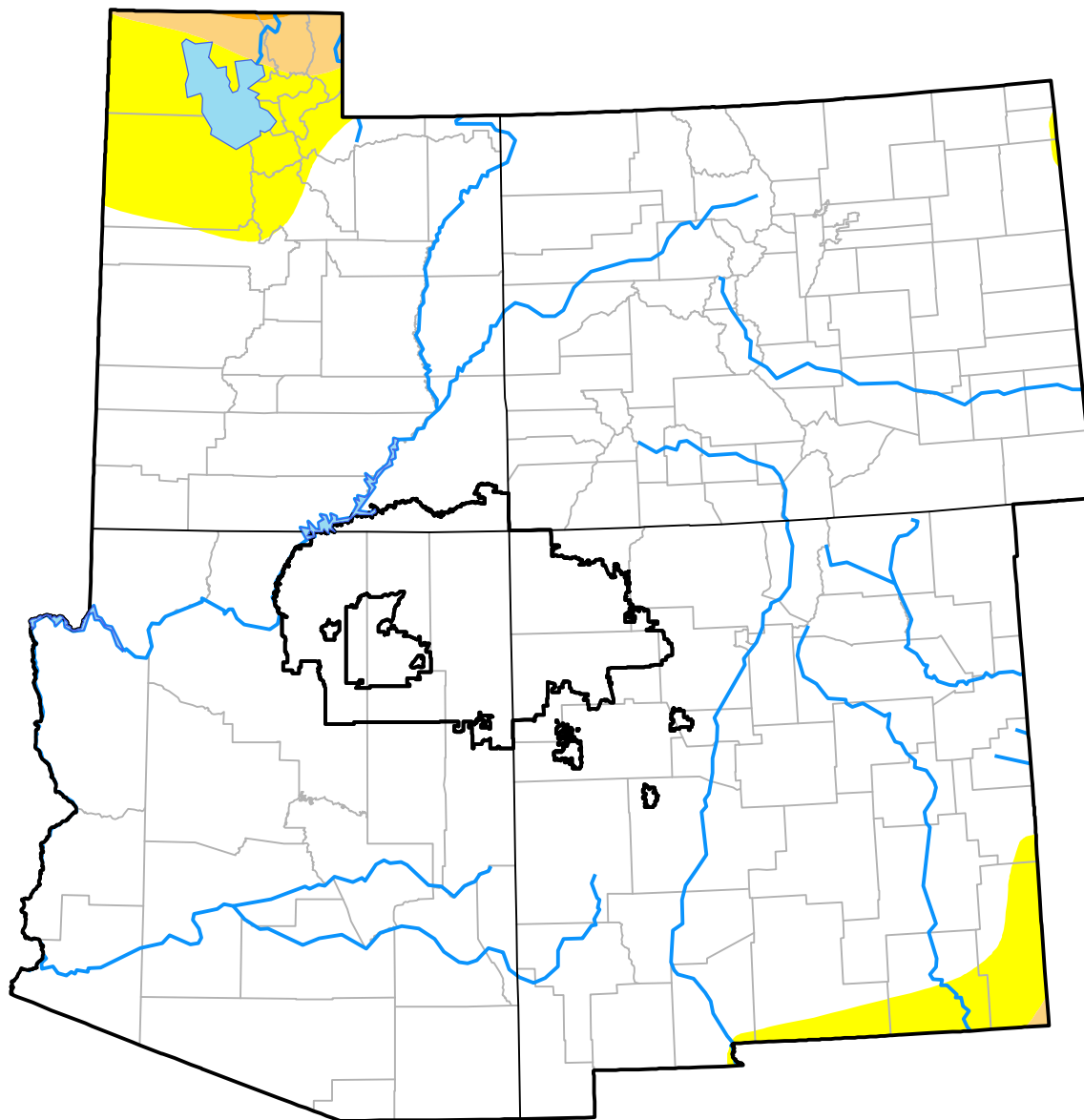
# Nebraska RDEWS and Surrounding Areas

(Released Thursday, May. 31, 2001)

Valid 8 a.m. EDT

Drought Conditions (Percent Area)

	None	D0	D1	D2	D3	D4
<b>Current</b>	93.33	5.76	0.86	0.04	0.00	0.00
<b>Last Week</b> <i>05-24-2001</i>	93.33	5.76	0.86	0.04	0.00	0.00
<b>3 Months Ago</b> <i>03-01-2001</i>	93.53	6.47	0.00	0.00	0.00	0.00
<b>Start of Calendar Year</b> <i>01-04-2001</i>	88.15	10.08	1.76	0.00	0.00	0.00
<b>Start of Water Year</b> <i>09-28-2000</i>	16.80	47.28	25.93	9.98	0.00	0.00
<b>One Year Ago</b> <i>06-01-2000</i>	54.11	14.63	14.71	12.76	3.79	0.00



**Intensity:**

- None
- D0 Abnormally Dry
- D1 Moderate Drought
- D2 Severe Drought
- D3 Extreme Drought
- D4 Exceptional Drought

The Drought Monitor focuses on broad-scale conditions. Local conditions may vary. For more information on the Drought Monitor, go to <https://droughtmonitor.unl.edu/About.aspx>

**Author:**

Karin Gleason  
National Centers for Environmental Information

