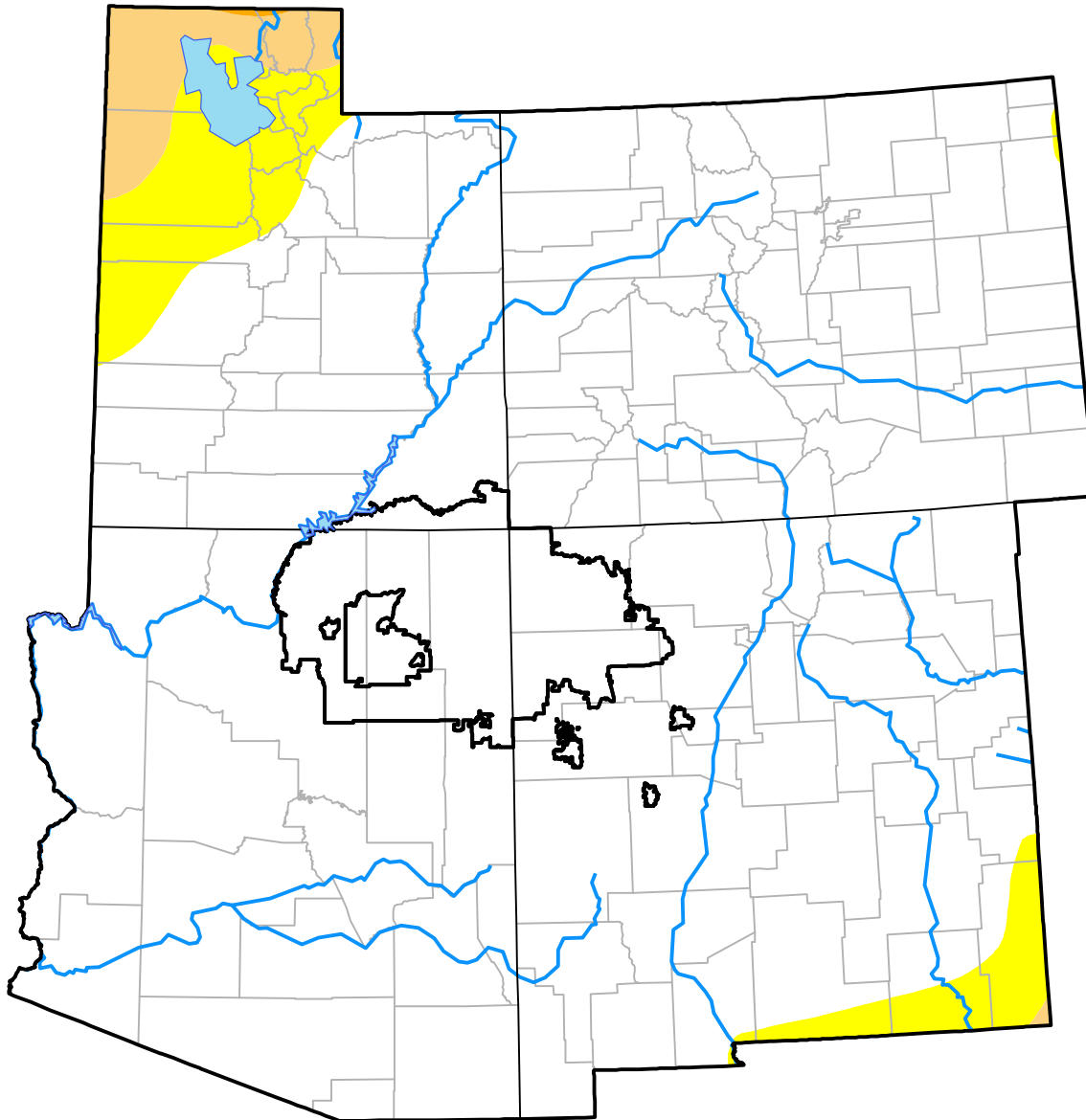


# U.S. Drought Monitor

## Navajo RDEWS

**June 5, 2001**  
 (Released Thursday, Jun. 7, 2001)  
 Valid 8 a.m. EDT



*Drought Conditions (Percent Area)*

	None	D0	D1	D2	D3	D4
<b>Current</b>	100.00	0.00	0.00	0.00	0.00	0.00
<b>Last Week</b> <i>05-31-2001</i>	100.00	0.00	0.00	0.00	0.00	0.00
<b>3 Months Ago</b> <i>03-08-2001</i>	100.00	0.00	0.00	0.00	0.00	0.00
<b>Start of Calendar Year</b> <i>01-04-2001</i>	100.00	0.00	0.00	0.00	0.00	0.00
<b>Start of Water Year</b> <i>09-28-2000</i>	0.03	49.76	38.20	12.01	0.00	0.00
<b>One Year Ago</b> <i>06-08-2000</i>	0.00	65.53	33.77	0.70	0.00	0.00

***Intensity:***

- None
- D0 Abnormally Dry
- D1 Moderate Drought
- D2 Severe Drought
- D3 Extreme Drought
- D4 Exceptional Drought

*The Drought Monitor focuses on broad-scale conditions. Local conditions may vary. For more information on the Drought Monitor, go to <https://droughtmonitor.unl.edu/About.aspx>*

***Author:***

Douglas Le Comte  
 CPC/NOAA

