

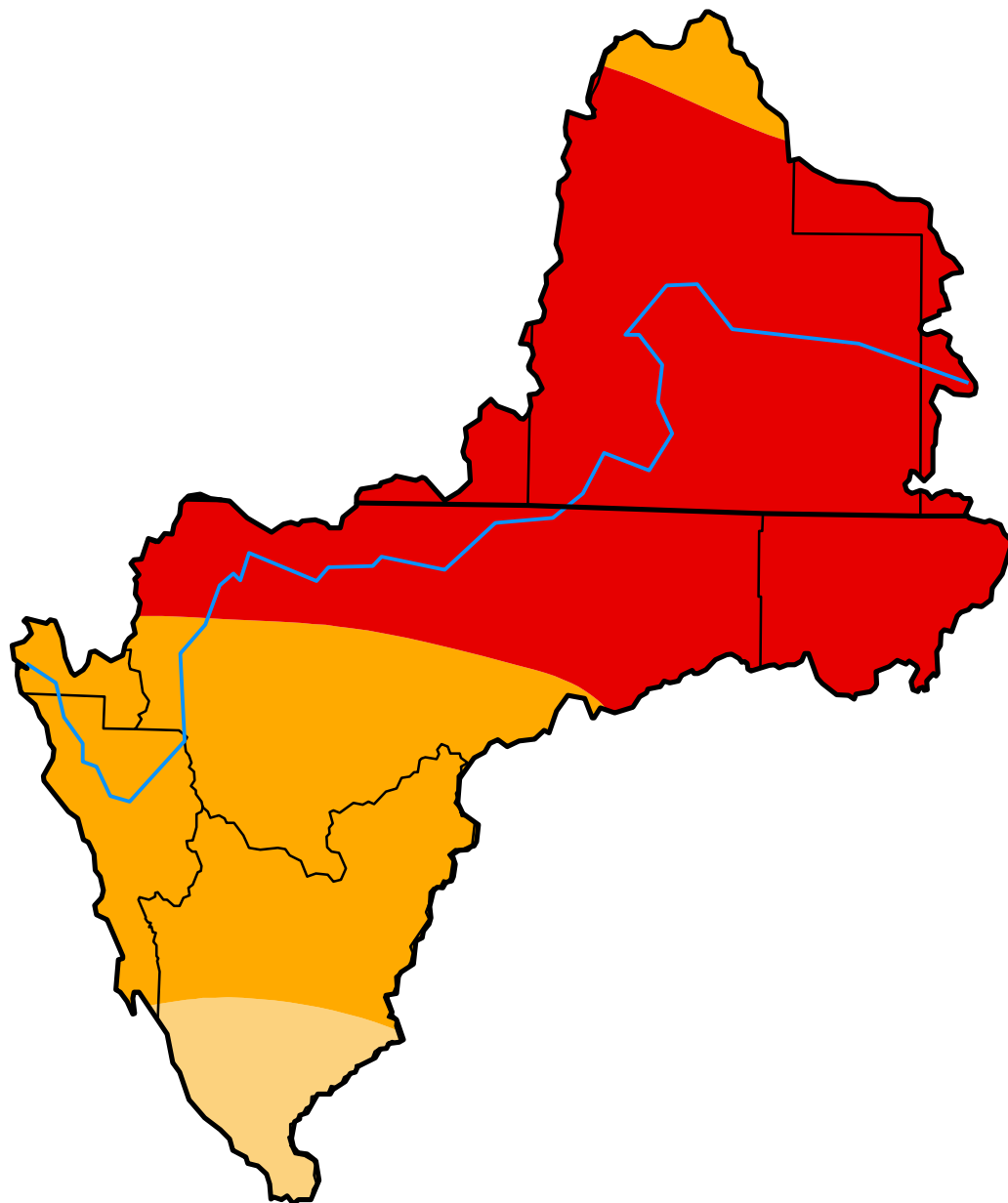
U.S. Drought Monitor Klamath River Basin

July 24, 2001
(Released Thursday, Jul. 26, 2001)

Valid 8 a.m. EDT

Drought Conditions (Percent Area)

	None	D0	D1	D2	D3	D4
Current	0.00	0.00	5.57	34.23	60.20	0.00
Last Week <i>07-17-2001</i>	0.00	0.00	5.57	34.23	60.20	0.00
3 Months Ago <i>04-24-2001</i>	0.00	16.72	21.27	27.29	34.72	0.00
Start of Calendar Year <i>01-02-2001</i>	100.00	0.00	0.00	0.00	0.00	0.00
Start of Water Year <i>09-26-2000</i>	100.00	0.00	0.00	0.00	0.00	0.00
One Year Ago <i>07-25-2000</i>	100.00	0.00	0.00	0.00	0.00	0.00



Intensity:

- D0 Abnormally Dry
- D1 Moderate Drought
- D2 Severe Drought
- D3 Extreme Drought
- D4 Exceptional Drought

The Drought Monitor focuses on broad-scale conditions. Local conditions may vary. See accompanying text summary for forecast statements.

Author:

Brad Rippey
U.S. Department of Agriculture



<http://droughtmonitor.unl.edu/>