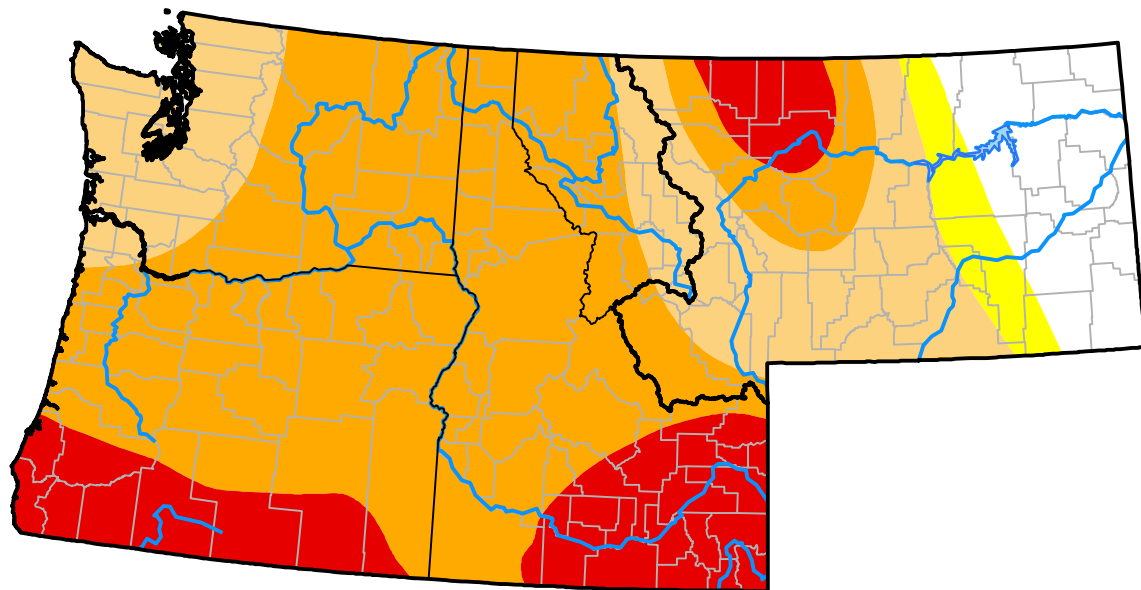


# U.S. Drought Monitor

## Pacific Northwest RDEWS

**July 31, 2001**  
 (Released Thursday, Aug. 2, 2001)  
 Valid 8 a.m. EDT



*Drought Conditions (Percent Area)*

	None	D0-D4	D1-D4	D2-D4	D3-D4	D4
<b>Current</b>	0.00	100.00	100.00	86.80	19.79	0.00
<b>Last Week</b> <i>07-26-2001</i>	0.00	100.00	100.00	86.80	9.47	0.00
<b>3 Months Ago</b> <i>05-03-2001</i>	0.00	100.00	99.49	54.75	2.37	0.00
<b>Start of Calendar Year</b> <i>01-04-2001</i>	95.74	4.26	2.20	0.42	0.00	0.00
<b>Start of Water Year</b> <i>09-28-2000</i>	63.88	36.12	23.07	6.98	0.76	0.00
<b>One Year Ago</b> <i>08-03-2000</i>	62.31	37.69	19.41	0.00	0.00	0.00

*Intensity:*



*The Drought Monitor focuses on broad-scale conditions. Local conditions may vary. For more information on the Drought Monitor, go to <https://droughtmonitor.unl.edu/About.aspx>*

*Author:*

Michael Hayes  
 National Drought Mitigation Center

