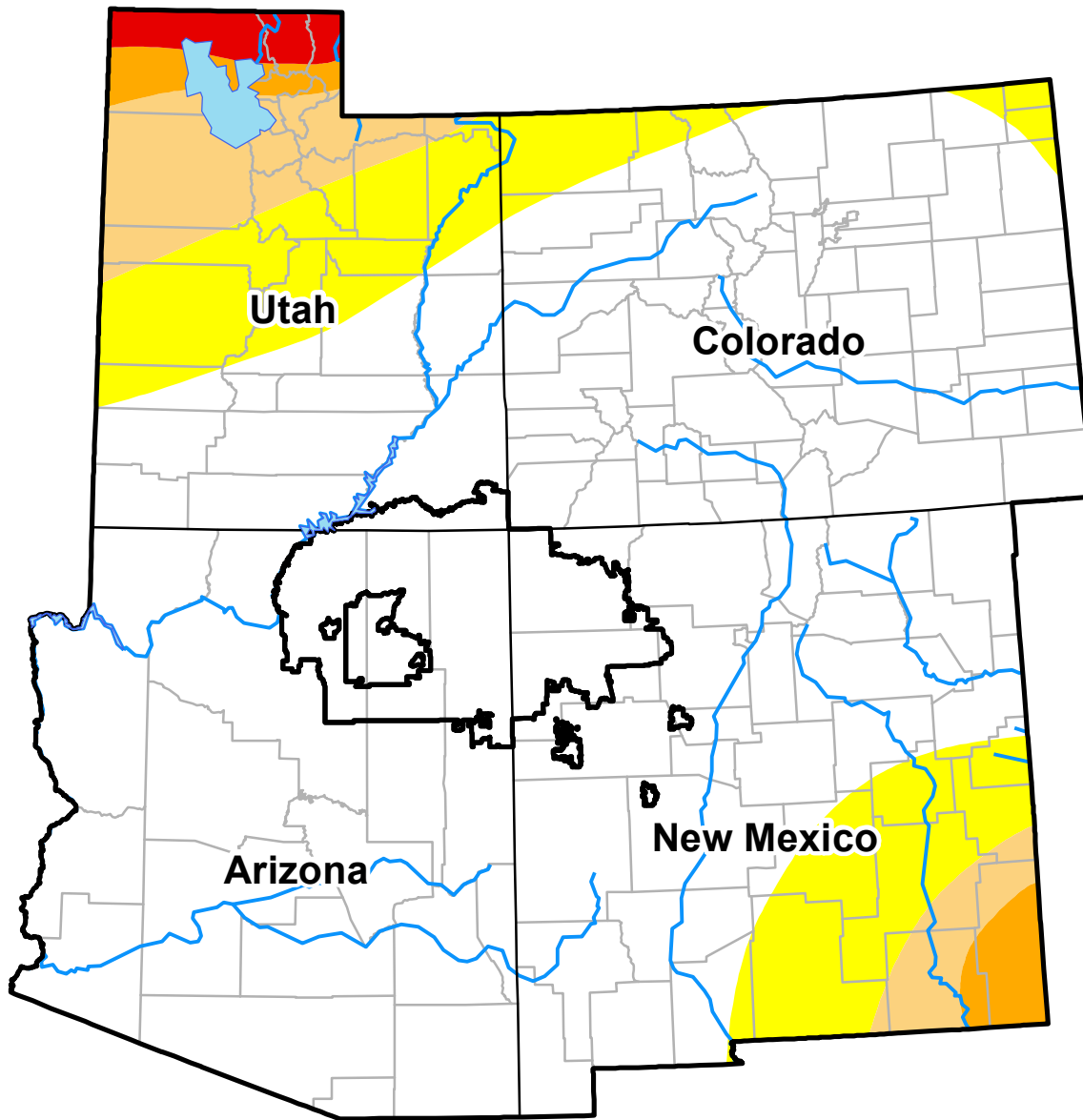


U.S. Drought Monitor

Navajo RDEWS

September 4, 2001
 (Released Thursday, Sep. 6, 2001)
 Valid 8 a.m. EDT



Drought Conditions (Percent Area)

	None	D0	D1	D2	D3	D4
Current	79.23	12.48	5.30	1.89	1.09	0.00
Last Week <i>08-28-2001</i>	79.17	12.54	5.33	1.86	1.09	0.00
3 Months Ago <i>06-05-2001</i>	92.10	5.71	2.15	0.04	0.00	0.00
Start of Calendar Year <i>01-02-2001</i>	88.15	10.08	1.76	0.00	0.00	0.00
Start of Water Year <i>09-26-2000</i>	16.80	47.28	25.93	9.98	0.00	0.00
One Year Ago <i>09-05-2000</i>	21.84	47.37	26.99	3.79	0.01	0.00

Intensity:

- D0 Abnormally Dry
- D1 Moderate Drought
- D2 Severe Drought
- D3 Extreme Drought
- D4 Exceptional Drought

The Drought Monitor focuses on broad-scale conditions. Local conditions may vary. See accompanying text summary for forecast statements.

Author:
 Richard Tinker
 CPC/NOAA/NWS/NCEP

