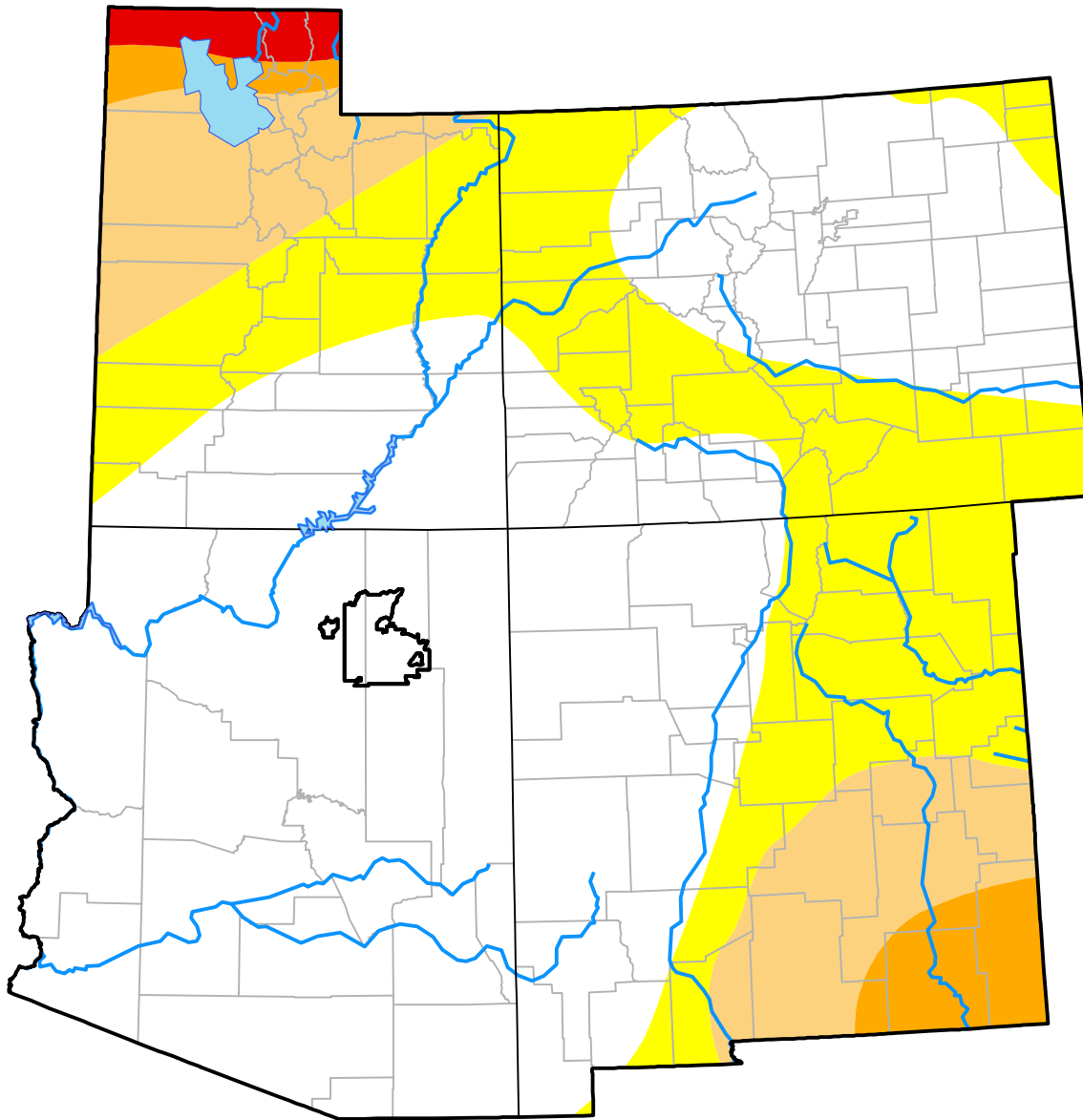


# U.S. Drought Monitor

## Hopi RDEWS

**September 18, 2001**  
*(Released Thursday, Sep. 20, 2001)*  
 Valid 8 a.m. EDT



*Drought Conditions (Percent Area)*

	None	D0	D1	D2	D3	D4
<b>Current</b>	100.00	0.00	0.00	0.00	0.00	0.00
<b>Last Week</b> <i>09-13-2001</i>	100.00	0.00	0.00	0.00	0.00	0.00
<b>3 Months Ago</b> <i>06-21-2001</i>	7.97	92.03	0.00	0.00	0.00	0.00
<b>Start of Calendar Year</b> <i>01-04-2001</i>	100.00	0.00	0.00	0.00	0.00	0.00
<b>Start of Water Year</b> <i>09-28-2000</i>	0.00	0.00	100.00	0.00	0.00	0.00
<b>One Year Ago</b> <i>09-21-2000</i>	0.00	69.67	30.33	0.00	0.00	0.00

***Intensity:***

- None
- D0 Abnormally Dry
- D1 Moderate Drought
- D2 Severe Drought
- D3 Extreme Drought
- D4 Exceptional Drought

*The Drought Monitor focuses on broad-scale conditions. Local conditions may vary. For more information on the Drought Monitor, go to <https://droughtmonitor.unl.edu/About.aspx>*

***Author:***

Scott Stephens  
 NOAA/NESDIS/NCEI

