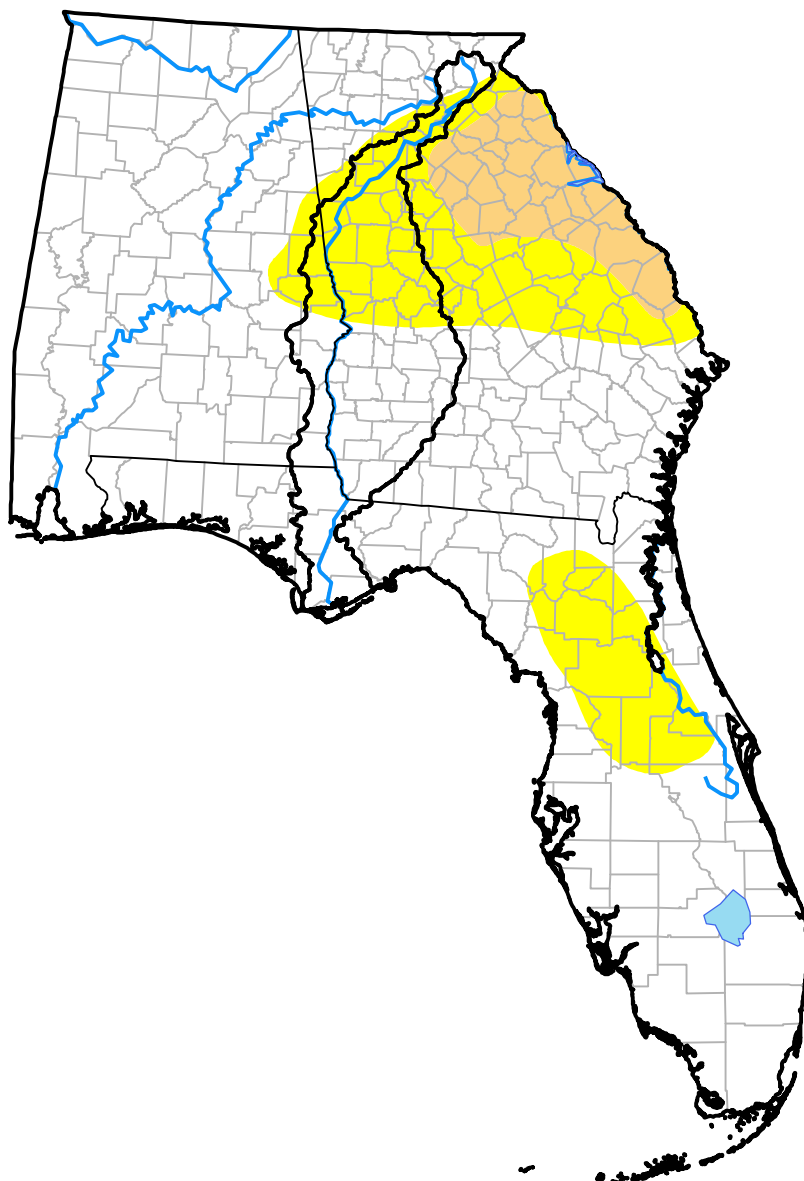


U.S. Drought Monitor ACF River Basin RDEWS

October 2, 2001
(Released Thursday, Oct. 4, 2001)
Valid 8 a.m. EDT



Intensity:



The Drought Monitor focuses on broad-scale conditions. Local conditions may vary. For more information on the Drought Monitor, go to <https://droughtmonitor.unl.edu/About.aspx>

Author:

Douglas Le Comte
CPC/NOAA



droughtmonitor.unl.edu