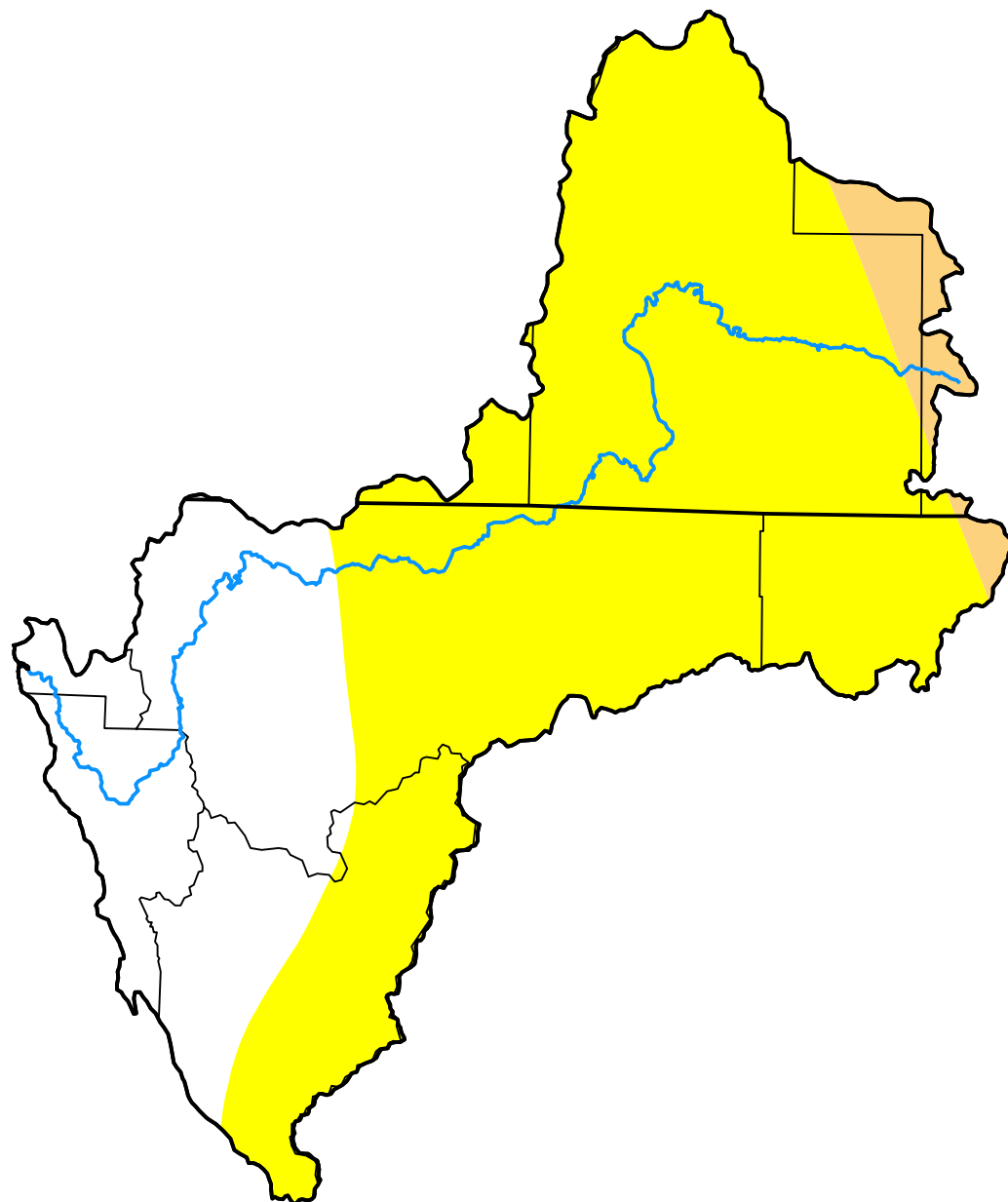


# U.S. Drought Monitor Klamath River Basin

**July 16, 2002**  
(Released Thursday, Jul. 18, 2002)  
Valid 8 a.m. EDT



*Drought Conditions (Percent Area)*

	None	D0-D4	D1-D4	D2-D4	D3-D4	D4
<b>Current</b>	26.73	73.27	4.00	0.00	0.00	0.00
<b>Last Week</b> 07-09-2002	28.27	71.73	0.00	0.00	0.00	0.00
<b>3 Months Ago</b> 04-16-2002	100.00	0.00	0.00	0.00	0.00	0.00
<b>Start of Calendar Year</b> 01-01-2002	36.22	63.78	50.98	20.39	0.00	0.00
<b>Start of Water Year</b> 09-25-2001	0.00	100.00	100.00	100.00	82.21	0.00
<b>One Year Ago</b> 07-17-2001	0.00	100.00	100.00	94.43	60.20	0.00

**Intensity:**

None	D2 Severe Drought
D0 Abnormally Dry	D3 Extreme Drought
D1 Moderate Drought	D4 Exceptional Drought

*The Drought Monitor focuses on broad-scale conditions. Local conditions may vary. For more information on the Drought Monitor, go to <https://droughtmonitor.unl.edu/About.aspx>*

**Author:**

Brad Rippey  
U.S. Department of Agriculture



**droughtmonitor.unl.edu**