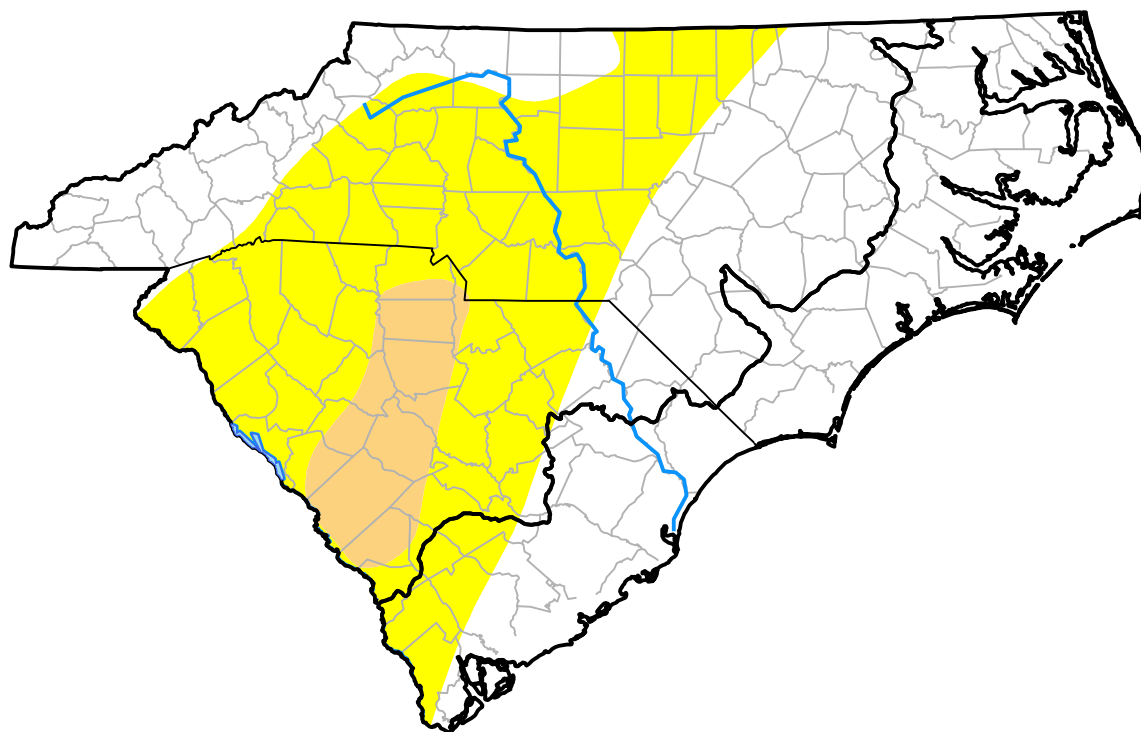


U.S. Drought Monitor

Coastal Carolinas RDEWS

December 17, 2002
 (Released Thursday, Dec. 19, 2002)
 Valid 7 a.m. EST



Drought Conditions (Percent Area)

	None	D0	D1	D2	D3	D4
Current	93.01	6.99	0.00	0.00	0.00	0.00
Last Week <i>12-12-2002</i>	93.31	6.68	0.01	0.00	0.00	0.00
3 Months Ago <i>09-19-2002</i>	20.67	54.15	22.53	2.66	0.00	0.00
Start of Calendar Year <i>01-03-2002</i>	0.00	0.00	0.00	59.73	40.27	0.00
Start of Water Year <i>10-03-2002</i>	40.81	31.75	16.63	10.81	0.00	0.00
One Year Ago <i>12-20-2001</i>	0.00	0.00	0.00	99.86	0.14	0.00

Intensity:

- None
- D0 Abnormally Dry
- D1 Moderate Drought
- D2 Severe Drought
- D3 Extreme Drought
- D4 Exceptional Drought

The Drought Monitor focuses on broad-scale conditions. Local conditions may vary. For more information on the Drought Monitor, go to <https://droughtmonitor.unl.edu/About.aspx>

Author:

Douglas Le Comte
 CPC/NOAA

