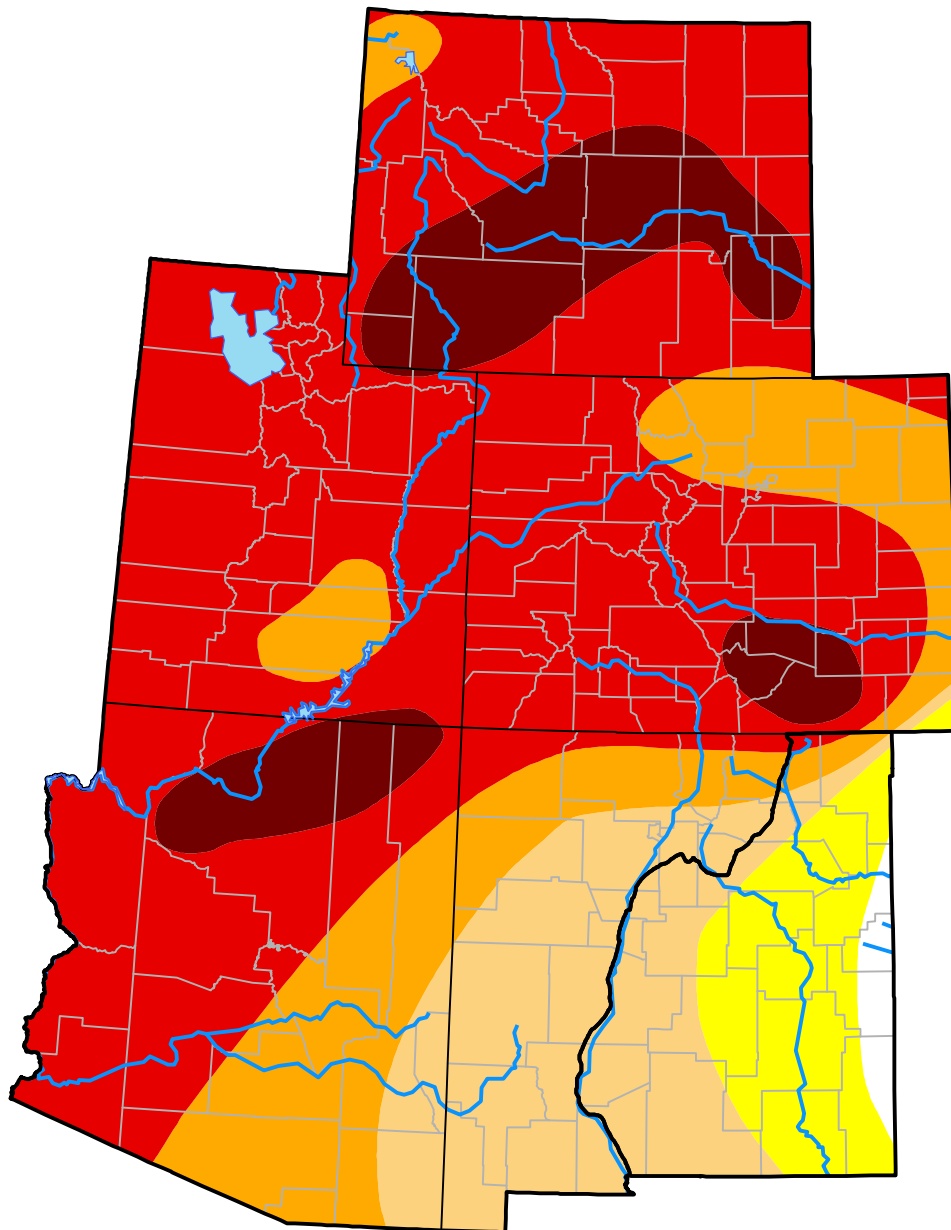


U.S. Drought Monitor

Intermountain West RDEWS

February 4, 2003
 (Released Thursday, Feb. 6, 2003)
 Valid 7 a.m. EST



Drought Conditions (Percent Area)

	None	D0	D1	D2	D3	D4
Current	0.92	6.26	13.84	16.32	51.83	10.84
Last Week <i>01-30-2003</i>	0.88	6.19	13.72	15.68	52.58	10.95
3 Months Ago <i>11-07-2002</i>	0.00	2.62	21.04	25.32	44.12	6.90
Start of Calendar Year <i>01-02-2003</i>	2.14	4.69	15.29	29.98	41.26	6.65
Start of Water Year <i>10-03-2002</i>	0.00	0.00	17.74	23.44	44.66	14.16
One Year Ago <i>02-07-2002</i>	13.85	41.68	28.59	11.01	4.87	0.00

Intensity:

- None
- D0 Abnormally Dry
- D1 Moderate Drought
- D2 Severe Drought
- D3 Extreme Drought
- D4 Exceptional Drought

The Drought Monitor focuses on broad-scale conditions. Local conditions may vary. For more information on the Drought Monitor, go to <https://droughtmonitor.unl.edu/About.aspx>

Author:

Mark Svoboda
 National Drought Mitigation Center

