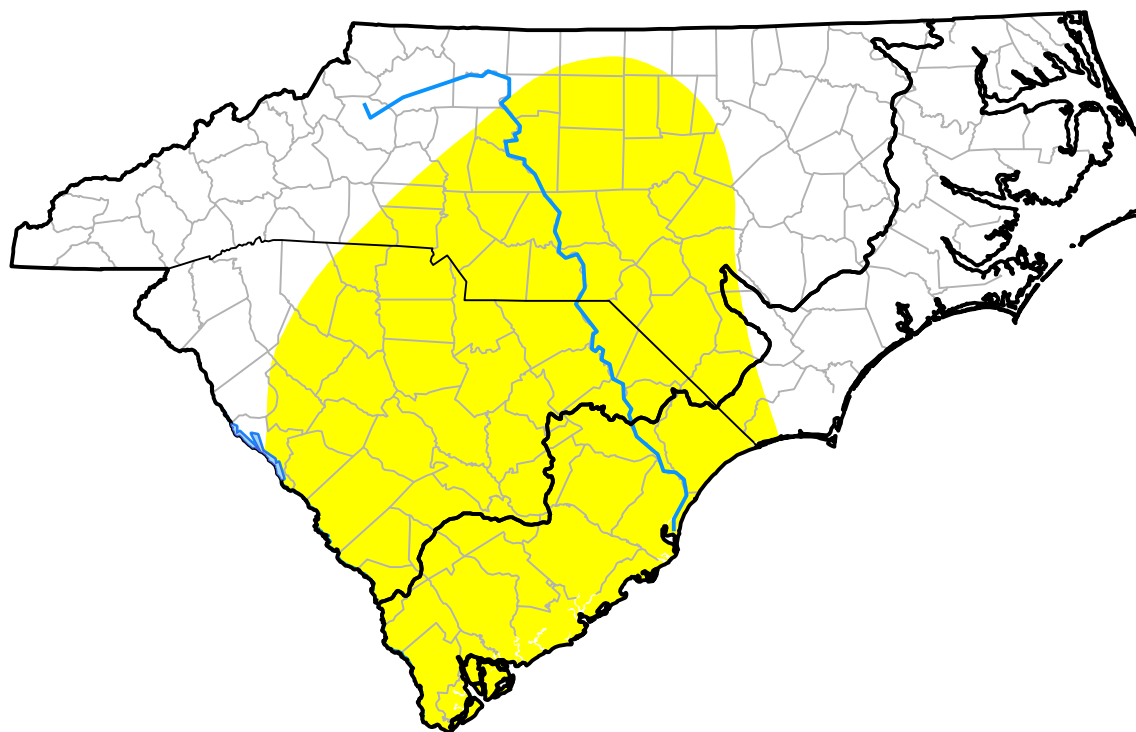


U.S. Drought Monitor

Coastal Carolinas RDEWS

February 25, 2003
(Released Thursday, Feb. 27, 2003)

Valid 7 a.m. EST



Drought Conditions (Percent Area)

	None	D0	D1	D2	D3	D4
Current	56.01	43.99	0.00	0.00	0.00	0.00
Last Week <i>02-20-2003</i>	55.85	43.94	0.21	0.00	0.00	0.00
3 Months Ago <i>11-27-2002</i>	90.65	9.20	0.14	0.00	0.00	0.00
Start of Calendar Year <i>01-02-2003</i>	92.36	7.64	0.00	0.00	0.00	0.00
Start of Water Year <i>10-03-2002</i>	40.81	31.75	16.63	10.81	0.00	0.00
One Year Ago <i>02-28-2002</i>	0.00	0.00	28.20	27.80	44.00	0.00

Intensity:



The Drought Monitor focuses on broad-scale conditions. Local conditions may vary. For more information on the Drought Monitor, go to <https://droughtmonitor.unl.edu/About.aspx>

Author:

David Miskus
 NOAA/NWS/NCEP/CPC



droughtmonitor.unl.edu