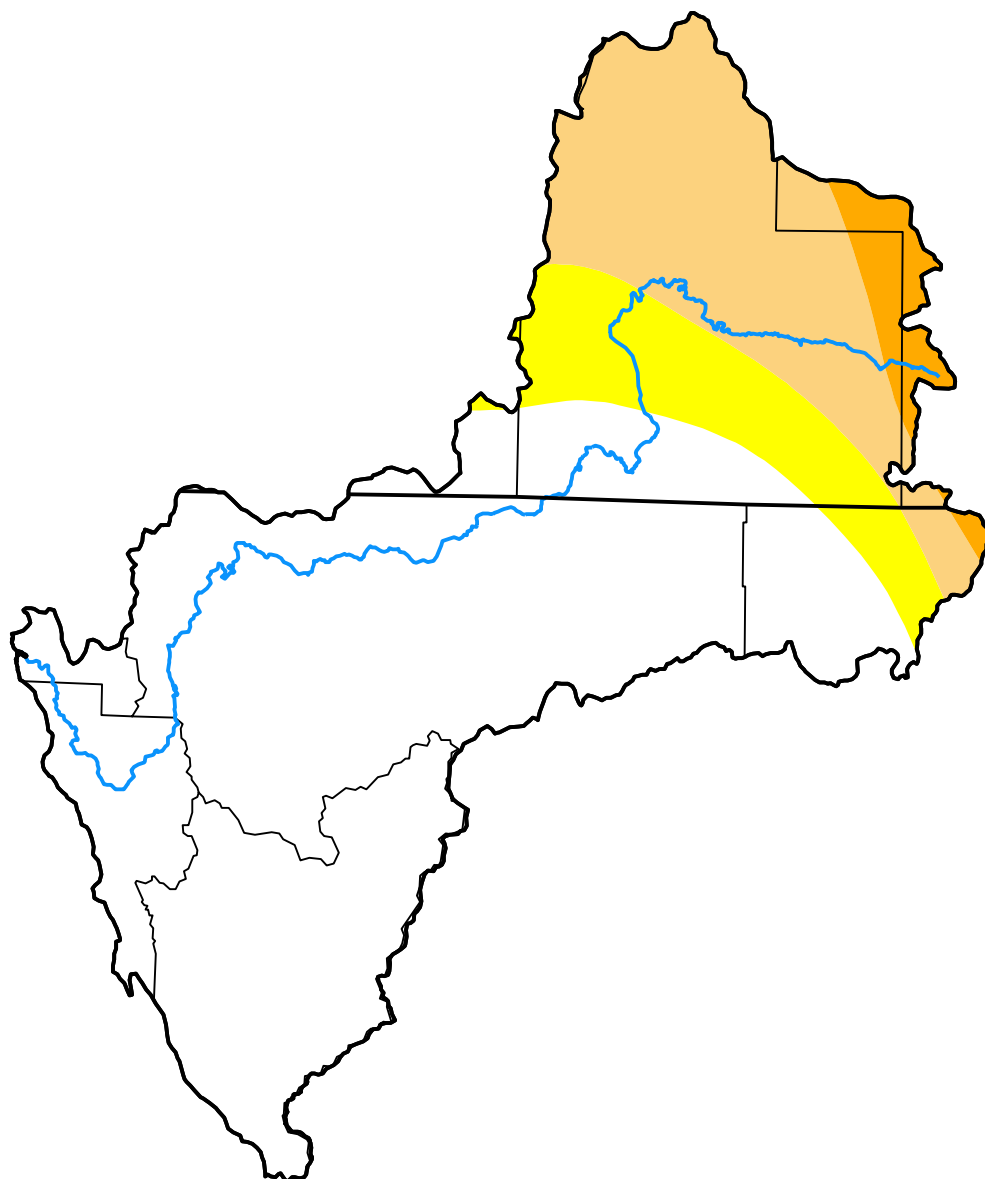
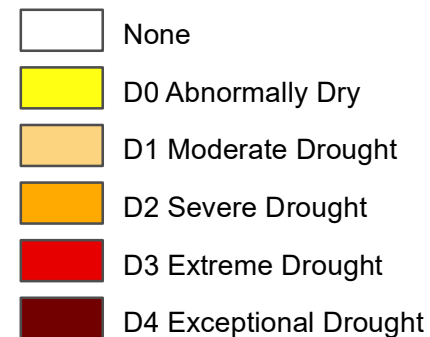


U.S. Drought Monitor **Klamath River Basin**

October 7, 2003
(Released Thursday, Oct. 9, 2003)
Valid 8 a.m. EDT



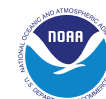
Intensity:



The Drought Monitor focuses on broad-scale conditions. Local conditions may vary. For more information on the Drought Monitor, go to <https://droughtmonitor.unl.edu/About.aspx>

Author:

Douglas Le Comte
CPC/NOAA



droughtmonitor.unl.edu