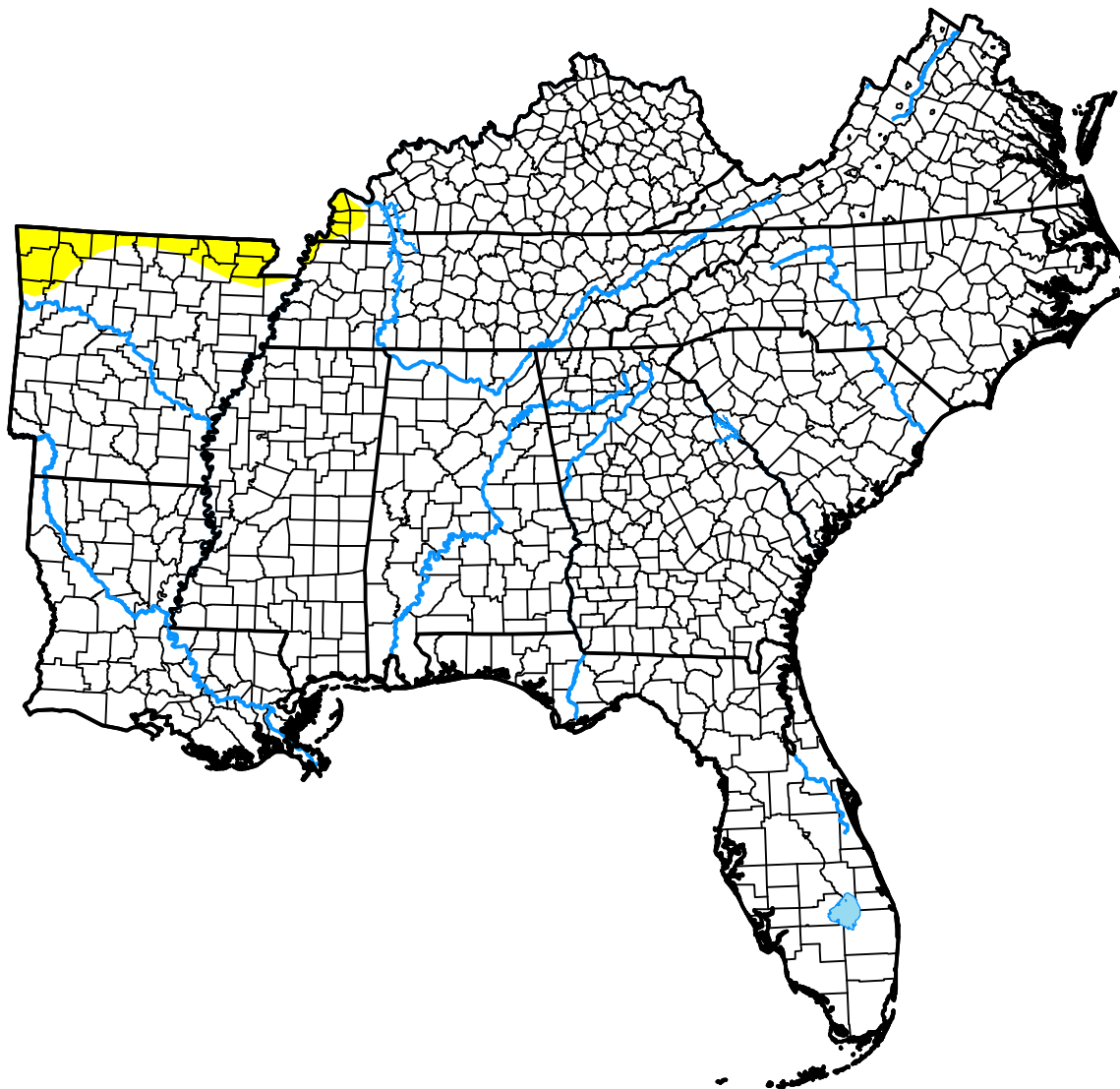


U.S. Drought Monitor

USDA Southeast Climate Hub

October 19, 2004
(Released Thursday, Oct. 21, 2004)

Valid 8 a.m. EDT



Drought Conditions (Percent Area)

	None	D0-D4	D1-D4	D2-D4	D3-D4	D4
Current	98.17	1.83	0.00	0.00	0.00	0.00
Last Week <i>10-12-2004</i>	95.52	4.48	0.37	0.00	0.00	0.00
3 Months Ago <i>07-20-2004</i>	91.98	8.02	0.00	0.00	0.00	0.00
Start of Calendar Year <i>12-30-2003</i>	97.26	2.74	0.05	0.00	0.00	0.00
Start of Water Year <i>09-28-2004</i>	86.88	13.12	0.00	0.00	0.00	0.00
One Year Ago <i>10-21-2003</i>	89.83	10.17	0.00	0.00	0.00	0.00

Intensity:

- None
- D0 Abnormally Dry
- D1 Moderate Drought
- D2 Severe Drought
- D3 Extreme Drought
- D4 Exceptional Drought

The Drought Monitor focuses on broad-scale conditions. Local conditions may vary. For more information on the Drought Monitor, go to <https://droughtmonitor.unl.edu/About.aspx>

Author:

Richard Tinker
 CPC/NOAA/NWS/NCEP



droughtmonitor.unl.edu