

# U.S. Drought Monitor

## Wind River and Surrounding Area

January 25, 2005

(Released Thursday, Jan. 27, 2005)

Valid 7 a.m. EST

Drought Conditions (Percent Area)

	None	D0-D4	D1-D4	D2-D4	D3-D4	D4
<b>Current</b>	0.00	0.00	0.00	0.00	0.00	0.00
<b>Last Week</b> 01-20-2005	0.00	0.00	0.00	0.00	0.00	0.00
<b>3 Months Ago</b> 10-28-2004	0.00	0.00	0.00	0.00	0.00	0.00
<b>Start of Calendar Year</b> 01-06-2005	0.00	0.00	0.00	0.00	0.00	0.00
<b>Start of Water Year</b> 09-30-2004	0.00	0.00	0.00	0.00	0.00	0.00
<b>One Year Ago</b> 01-29-2004	0.00	0.00	0.00	0.00	0.00	0.00

Note: Statistics are for the surrounding area including the reservation.

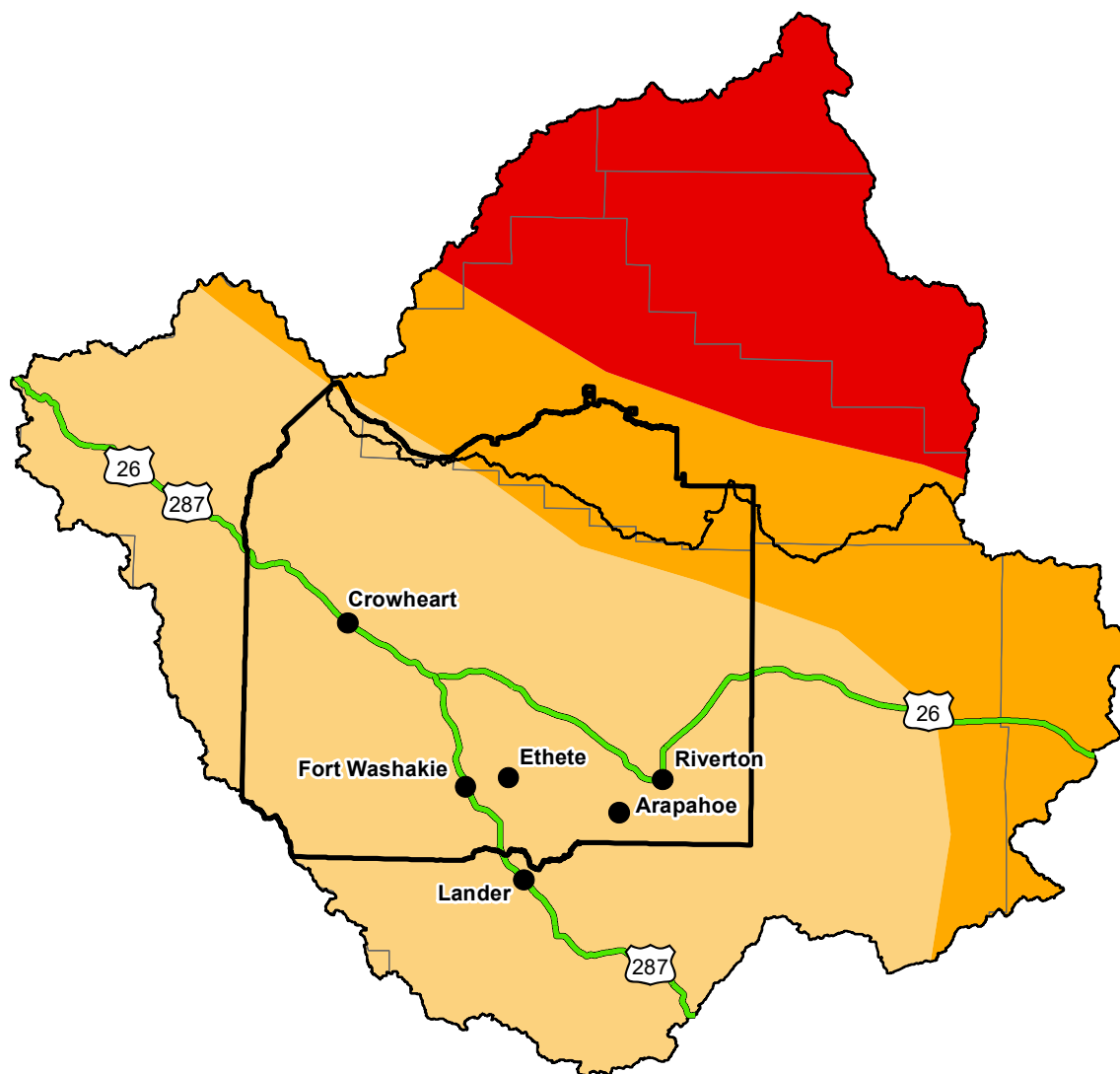
### Intensity:

 None	 D2 Severe Drought
 D0 Abnormally Dry	 D3 Extreme Drought
 D1 Moderate Drought	 D4 Exceptional Drought

The Drought Monitor focuses on broad-scale conditions. Local conditions may vary. For more information on the Drought Monitor, go to <https://droughtmonitor.unl.edu/About.aspx>

### Author:

Brad Rippey  
U.S. Department of Agriculture



<http://droughtmonitor.unl.edu/>