

U.S. Drought Monitor

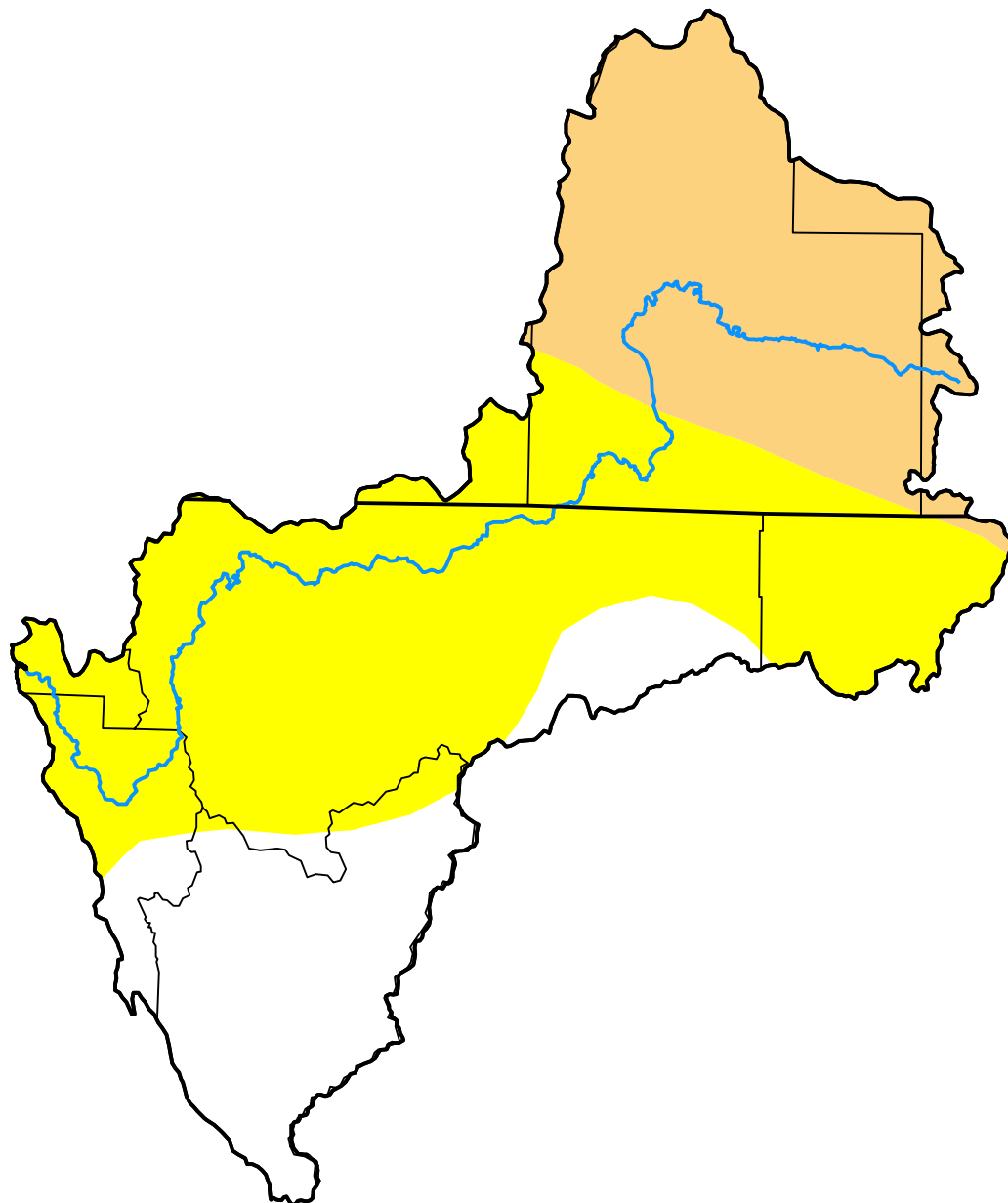
Klamath River Basin

February 15, 2005
(Released Thursday, Feb. 17, 2005)

Valid 7 a.m. EST

Drought Conditions (Percent Area)

	None	D0	D1	D2	D3	D4
Current	21.43	50.34	28.23	0.00	0.00	0.00
Last Week <i>02-08-2005</i>	58.59	32.63	8.78	0.00	0.00	0.00
3 Months Ago <i>11-16-2004</i>	47.93	35.00	16.79	0.28	0.00	0.00
Start of Calendar Year <i>01-04-2005</i>	76.59	14.93	8.48	0.00	0.00	0.00
Start of Water Year <i>09-28-2004</i>	35.84	46.64	17.24	0.28	0.00	0.00
One Year Ago <i>02-17-2004</i>	93.81	6.19	0.00	0.00	0.00	0.00



Intensity:

- None
- D0 Abnormally Dry
- D1 Moderate Drought
- D2 Severe Drought
- D3 Extreme Drought
- D4 Exceptional Drought

The Drought Monitor focuses on broad-scale conditions. Local conditions may vary. For more information on the Drought Monitor, go to <https://droughtmonitor.unl.edu/About.aspx>

Author:

Richard Tinker
 CPC/NOAA/NWS/NCEP

