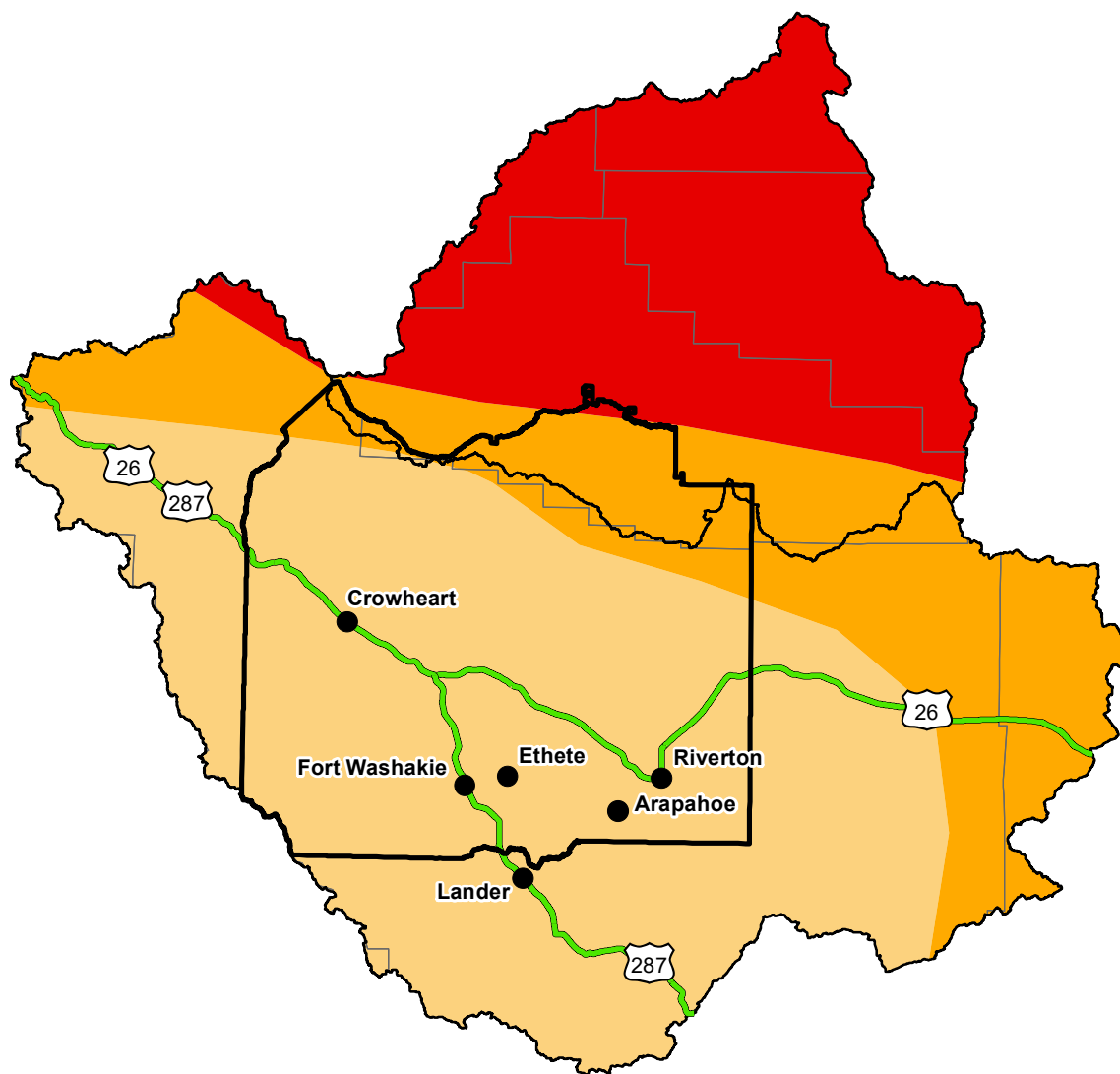


U.S. Drought Monitor

Wind River and Surrounding Area

February 15, 2005
 (Released Thursday, Feb. 17, 2005)
 Valid 7 a.m. EST



Drought Conditions (Percent Area)

	None	D0-D4	D1-D4	D2-D4	D3-D4	D4
Current	0.00	0.00	0.00	0.00	0.00	0.00
Last Week <i>02-10-2005</i>	0.00	0.00	0.00	0.00	0.00	0.00
3 Months Ago <i>11-18-2004</i>	0.00	0.00	0.00	0.00	0.00	0.00
Start of Calendar Year <i>01-06-2005</i>	0.00	0.00	0.00	0.00	0.00	0.00
Start of Water Year <i>09-30-2004</i>	0.00	0.00	0.00	0.00	0.00	0.00
One Year Ago <i>02-19-2004</i>	0.00	0.00	0.00	0.00	0.00	0.00

Note: Statistics are for the surrounding area including the reservation.

Intensity:

None	D2 Severe Drought
D0 Abnormally Dry	D3 Extreme Drought
D1 Moderate Drought	D4 Exceptional Drought

The Drought Monitor focuses on broad-scale conditions. Local conditions may vary. For more information on the Drought Monitor, go to <https://droughtmonitor.unl.edu/About.aspx>

Author:

Richard Tinker
 CPC/NOAA/NWS/NCEP



<http://droughtmonitor.unl.edu/>