

U.S. Drought Monitor

Wind River and Surrounding Area

June 14, 2005

(Released Thursday, Jun. 16, 2005)

Valid 8 a.m. EDT

Drought Conditions (Percent Area)

	None	D0	D1	D2	D3	D4
Current	0.00	0.00	0.00	0.00	0.00	0.00
Last Week <i>06-09-2005</i>	0.00	0.00	0.00	0.00	0.00	0.00
3 Months Ago <i>03-17-2005</i>	0.00	0.00	0.00	0.00	0.00	0.00
Start of Calendar Year <i>01-06-2005</i>	0.00	0.00	0.00	0.00	0.00	0.00
Start of Water Year <i>09-30-2004</i>	0.00	0.00	0.00	0.00	0.00	0.00
One Year Ago <i>06-17-2004</i>	0.00	0.00	0.00	0.00	0.00	0.00

Note: Statistics are for the surrounding area including the reservation.

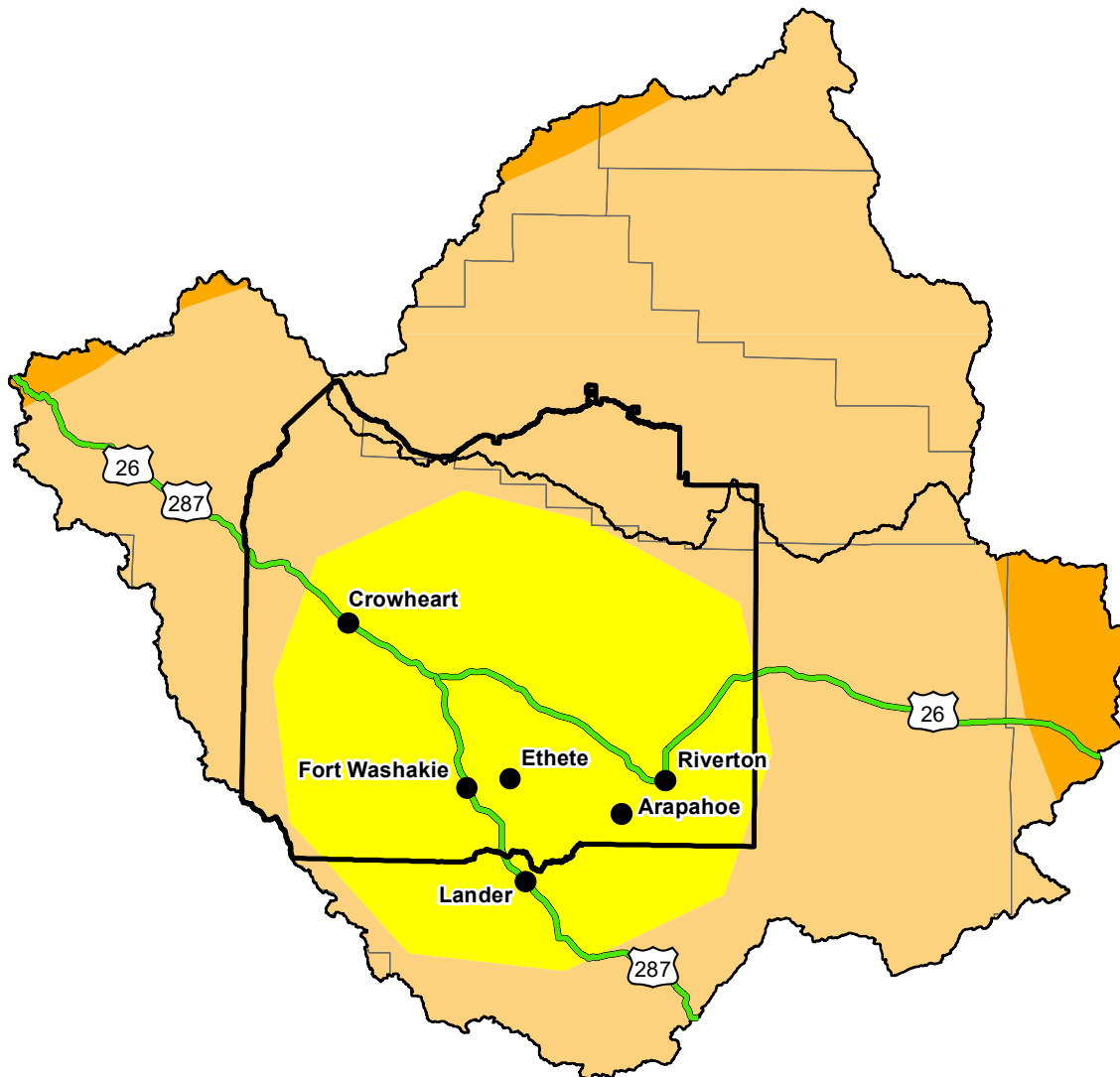
Intensity:

 None	 D2 Severe Drought
 D0 Abnormally Dry	 D3 Extreme Drought
 D1 Moderate Drought	 D4 Exceptional Drought

The Drought Monitor focuses on broad-scale conditions. Local conditions may vary. For more information on the Drought Monitor, go to <https://droughtmonitor.unl.edu/About.aspx>

Author:

Michael Hayes
National Drought Mitigation Center



<http://droughtmonitor.unl.edu/>