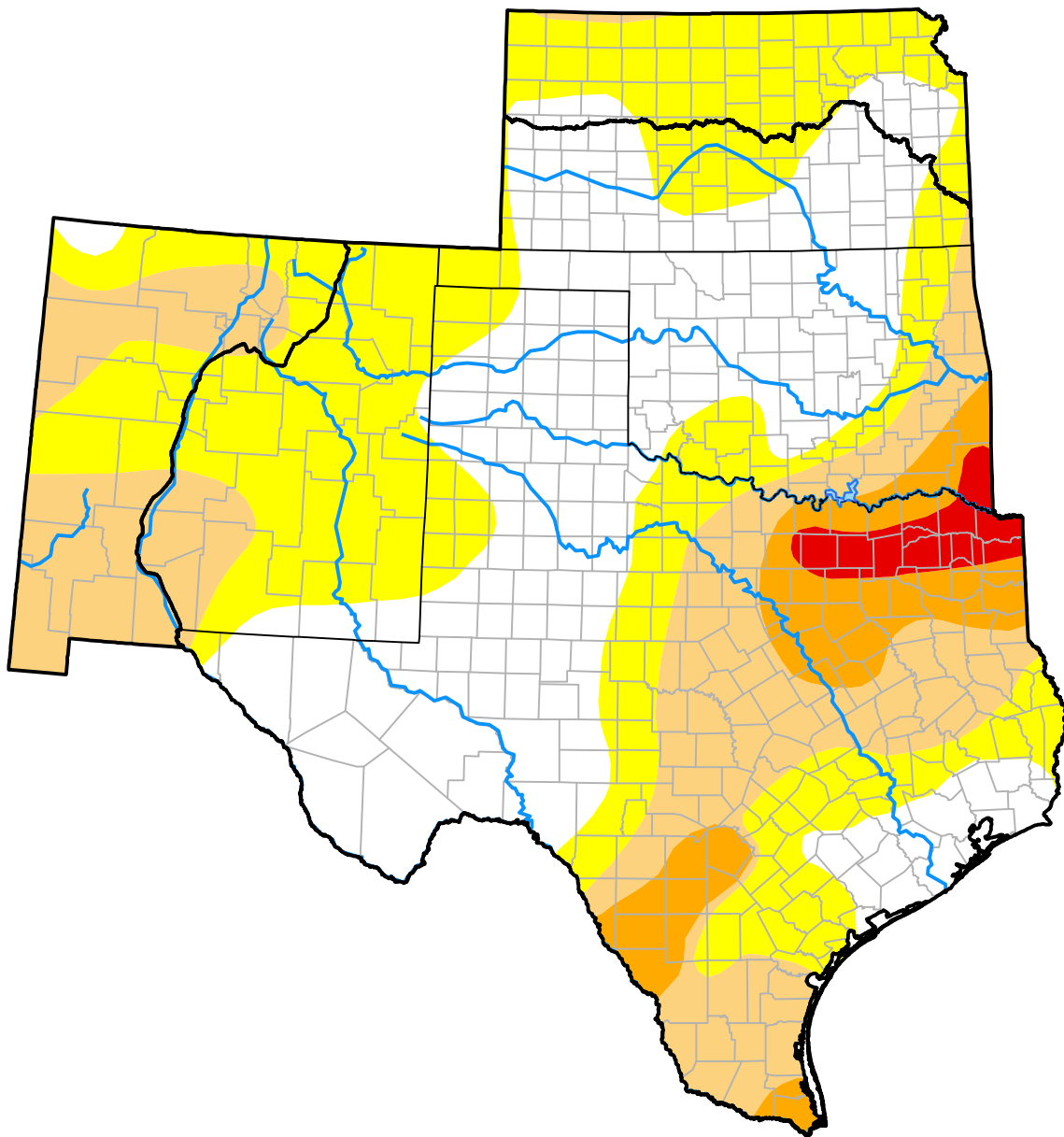


U.S. Drought Monitor

Southern Plains RDEWS

August 2, 2005
 (Released Thursday, Aug. 4, 2005)
 Valid 8 a.m. EDT



Drought Conditions (Percent Area)

	None	D0-D4	D1-D4	D2-D4	D3-D4	D4
Current	34.31	65.69	35.01	9.92	2.22	0.00
Last Week <i>07-28-2005</i>	35.26	64.74	31.84	10.44	2.23	0.00
3 Months Ago <i>05-05-2005</i>	35.35	64.65	13.03	0.56	0.00	0.00
Start of Calendar Year <i>01-06-2005</i>	81.49	18.51	16.25	9.88	3.44	0.00
Start of Water Year <i>09-30-2004</i>	76.41	23.59	18.07	13.46	2.05	0.00
One Year Ago <i>08-05-2004</i>	65.43	34.57	22.07	17.37	2.86	0.00

Intensity:



The Drought Monitor focuses on broad-scale conditions. Local conditions may vary. For more information on the Drought Monitor, go to <https://droughtmonitor.unl.edu/About.aspx>

Author:

Michael Hayes
 National Drought Mitigation Center

