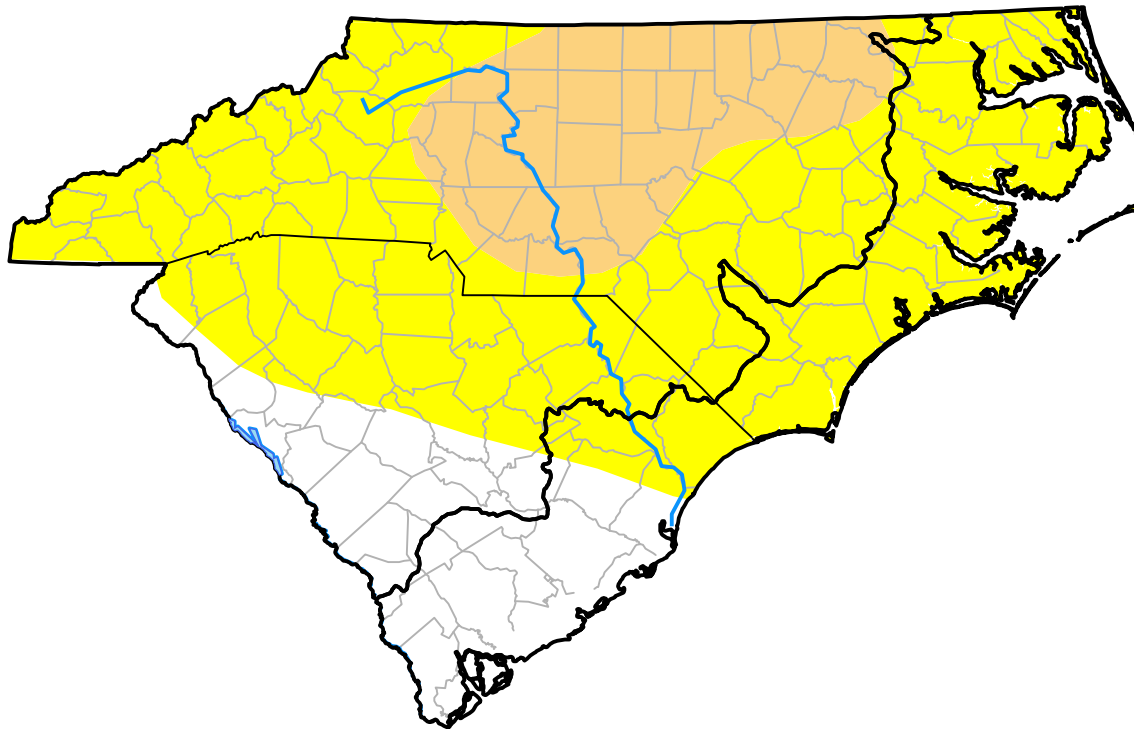


Carolinas RDEWS and Surrounding Areas

(Released Thursday, Mar. 23, 2006)
 11:00 a.m. EST

Drought Conditions (Percent Area)

	None	D0	D1	D2	D3	D4
Current	19.08	61.77	19.15	0.00	0.00	0.00
Last Week <i>03-16-2006</i>	18.82	62.03	19.15	0.00	0.00	0.00
3 Months Ago <i>12-22-2005</i>	87.60	10.64	1.77	0.00	0.00	0.00
Start of Calendar Year <i>01-05-2006</i>	92.44	7.56	0.00	0.00	0.00	0.00
Start of Water Year <i>09-29-2005</i>	28.11	52.60	19.29	0.00	0.00	0.00
One Year Ago <i>03-24-2005</i>	68.10	31.90	0.00	0.00	0.00	0.00



Intensity:

- None
- D0 Abnormally Dry
- D1 Moderate Drought
- D2 Severe Drought
- D3 Extreme Drought
- D4 Exceptional Drought

The Drought Monitor focuses on broad-scale conditions. Local conditions may vary. For more information on the Drought Monitor, go to <https://droughtmonitor.unl.edu/About.aspx>

Author:

Richard Heim
 NCEI/NOAA

