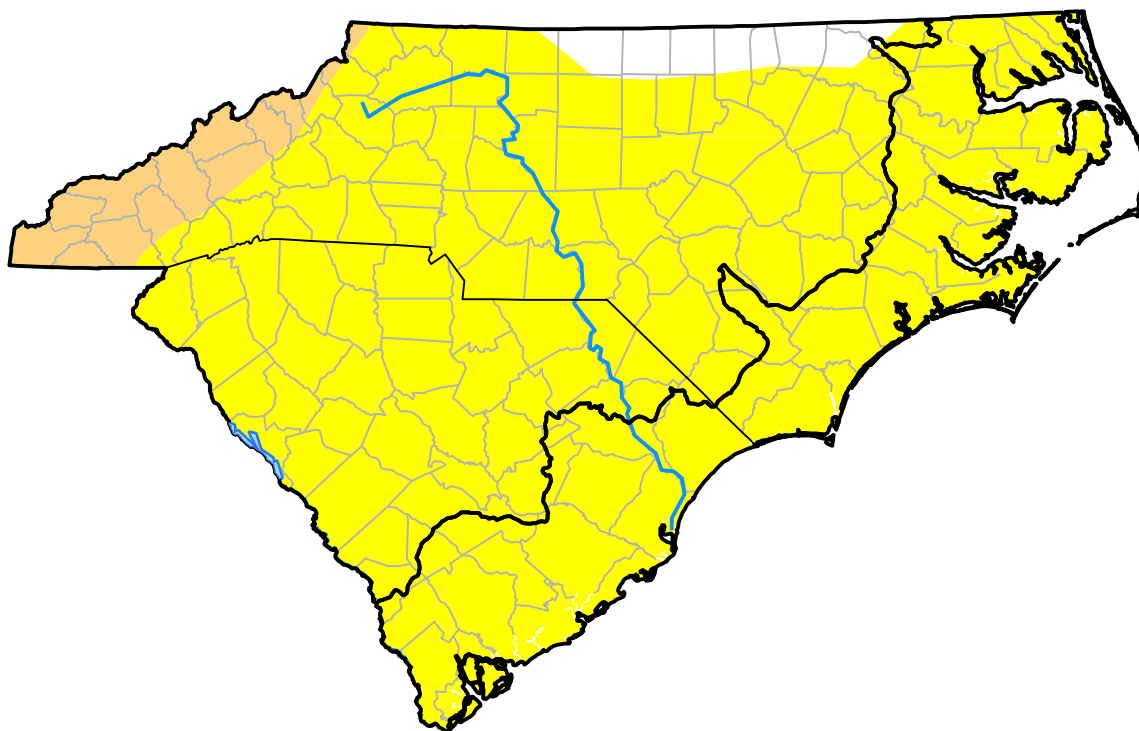


U.S. Drought Monitor

Coastal Carolinas RDEWS

April 3, 2007
 (Released Thursday, Apr. 5, 2007)
 Valid 8 a.m. EDT



Drought Conditions (Percent Area)

	None	D0	D1	D2	D3	D4
Current	0.00	100.00	0.00	0.00	0.00	0.00
Last Week <i>03-29-2007</i>	0.00	100.00	0.00	0.00	0.00	0.00
3 Months Ago <i>01-04-2007</i>	93.06	6.94	0.00	0.00	0.00	0.00
Start of Calendar Year <i>01-04-2007</i>	93.06	6.94	0.00	0.00	0.00	0.00
Start of Water Year <i>09-28-2006</i>	97.91	2.09	0.00	0.00	0.00	0.00
One Year Ago <i>04-06-2006</i>	23.45	75.81	0.74	0.00	0.00	0.00

Intensity:



The Drought Monitor focuses on broad-scale conditions. Local conditions may vary. For more information on the Drought Monitor, go to <https://droughtmonitor.unl.edu/About.aspx>

Author:

Thomas Heddinghaus
 CPC/NOAA



droughtmonitor.unl.edu