

U.S. Drought Monitor

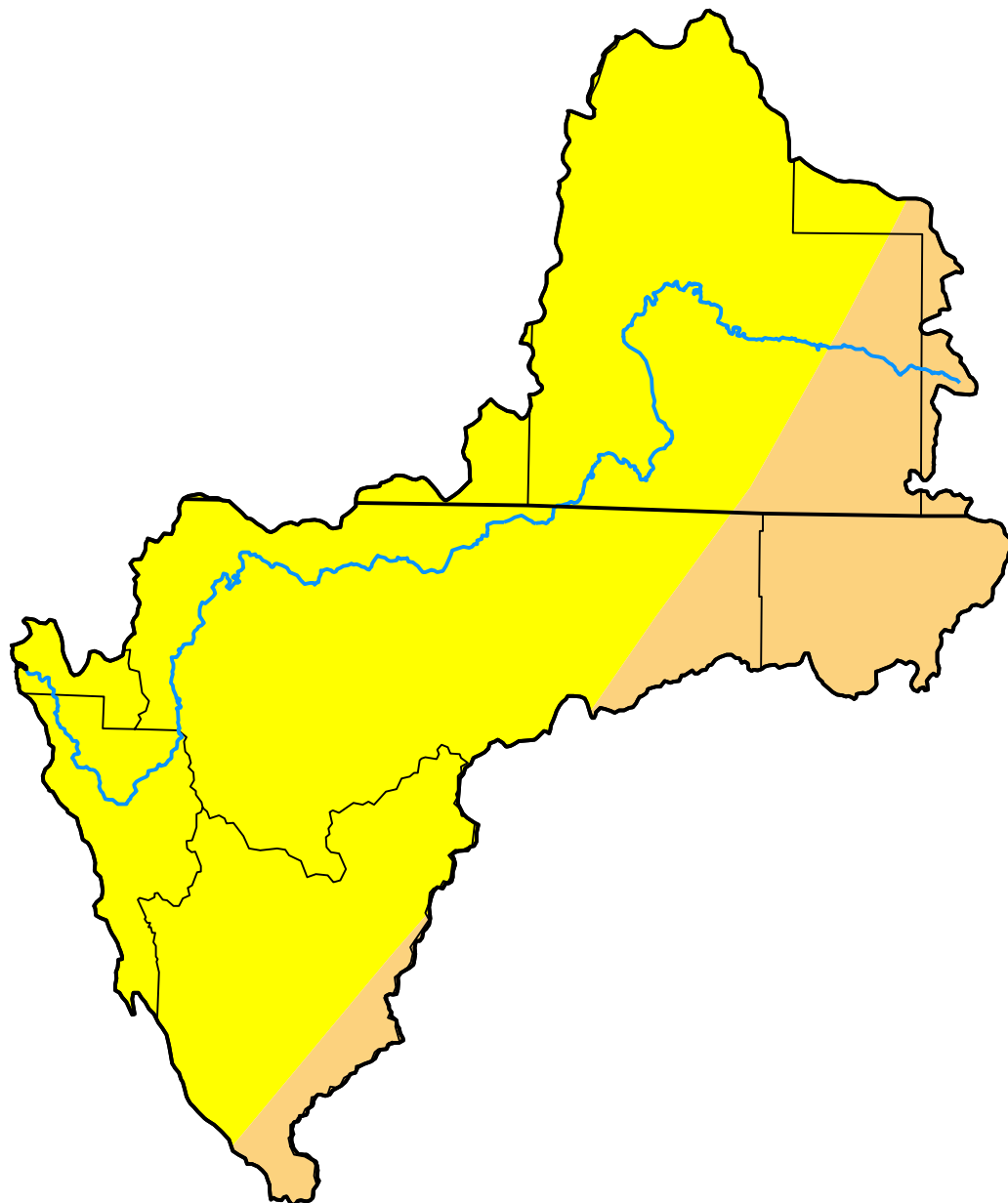
Klamath River Basin

July 17, 2007
 (Released Thursday, Jul. 19, 2007)

Valid 8 a.m. EDT

Drought Conditions (Percent Area)

	None	D0	D1	D2	D3	D4
Current	0.00	78.31	21.69	0.00	0.00	0.00
Last Week <i>07-10-2007</i>	0.00	78.31	21.69	0.00	0.00	0.00
3 Months Ago <i>04-17-2007</i>	32.87	63.51	3.62	0.00	0.00	0.00
Start of Calendar Year <i>01-02-2007</i>	100.00	0.00	0.00	0.00	0.00	0.00
Start of Water Year <i>09-26-2006</i>	100.00	0.00	0.00	0.00	0.00	0.00
One Year Ago <i>07-18-2006</i>	100.00	0.00	0.00	0.00	0.00	0.00



Intensity:

- None
- D0 Abnormally Dry
- D1 Moderate Drought
- D2 Severe Drought
- D3 Extreme Drought
- D4 Exceptional Drought

The Drought Monitor focuses on broad-scale conditions. Local conditions may vary. For more information on the Drought Monitor, go to <https://droughtmonitor.unl.edu/About.aspx>

Author:

Brad Rippey
 U.S. Department of Agriculture



droughtmonitor.unl.edu