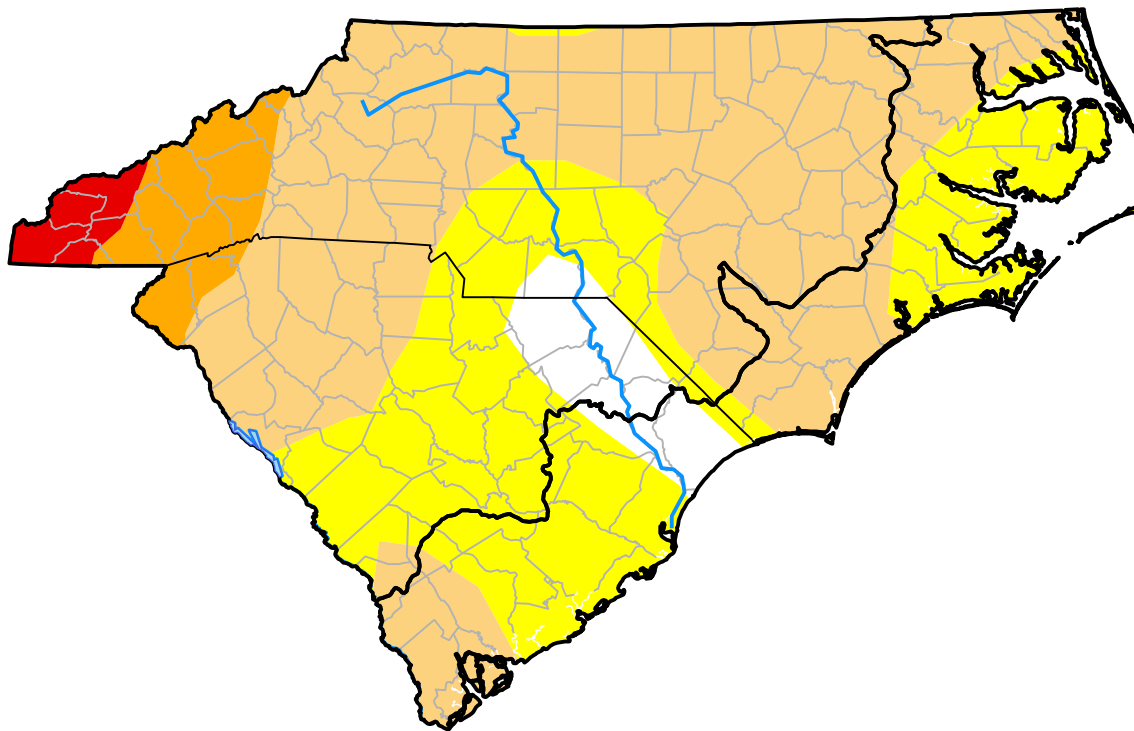


Carolinas RDEWS and Surrounding Areas

Drought Conditions (Percent Area)

	None	D0-D4	D1-D4	D2-D4	D3-D4	D4
Current	5.77	94.23	61.22	7.69	1.89	0.00
Last Week <i>07-12-2007</i>	5.62	94.38	59.31	7.31	1.92	0.00
3 Months Ago <i>04-19-2007</i>	60.62	39.38	11.84	0.00	0.00	0.00
Start of Calendar Year <i>01-04-2007</i>	96.43	3.57	0.00	0.00	0.00	0.00
Start of Water Year <i>09-28-2006</i>	93.20	6.80	0.00	0.00	0.00	0.00
One Year Ago <i>07-20-2006</i>	48.16	51.84	19.24	0.00	0.00	0.00



Intensity:

- None
- D0 Abnormally Dry
- D1 Moderate Drought
- D2 Severe Drought
- D3 Extreme Drought
- D4 Exceptional Drought

The Drought Monitor focuses on broad-scale conditions. Local conditions may vary. For more information on the Drought Monitor, go to <https://droughtmonitor.unl.edu/About.aspx>

Author:

Brad Rippey
U.S. Department of Agriculture

