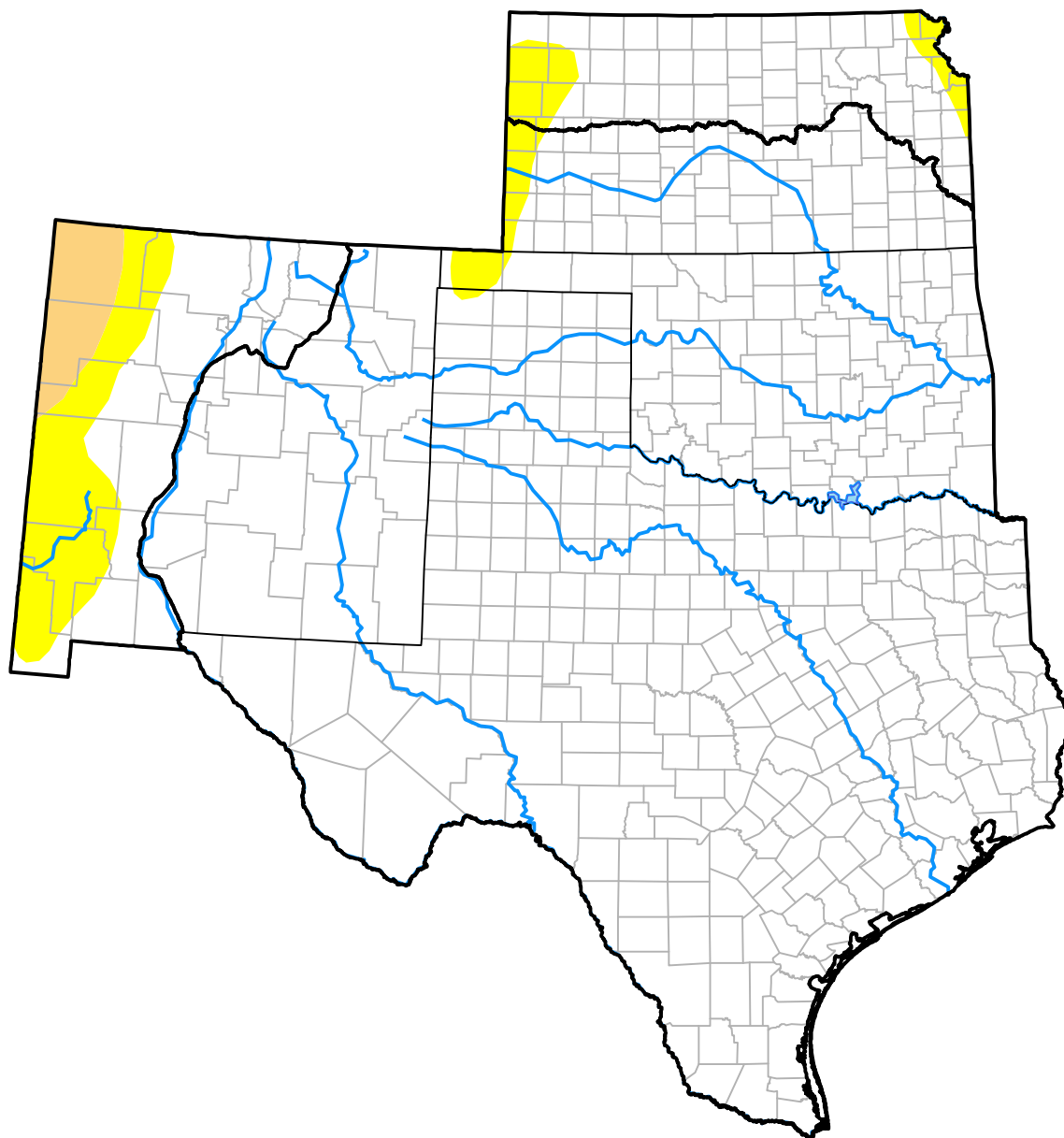


U.S. Drought Monitor

Southern Plains RDEWS

August 14, 2007
 (Released Thursday, Aug. 16, 2007)
 Valid 8 a.m. EDT



Drought Conditions (Percent Area)

	None	D0-D4	D1-D4	D2-D4	D3-D4	D4
Current	93.70	6.30	1.73	0.00	0.00	0.00
Last Week <i>08-09-2007</i>	93.76	6.24	2.02	0.00	0.00	0.00
3 Months Ago <i>05-17-2007</i>	90.20	9.80	2.69	1.35	0.00	0.00
Start of Calendar Year <i>01-04-2007</i>	32.71	67.29	38.98	25.71	13.90	2.19
Start of Water Year <i>09-28-2006</i>	35.09	64.91	48.50	32.55	14.32	0.95
One Year Ago <i>08-17-2006</i>	8.16	91.84	76.79	58.91	32.10	8.64

Intensity:

None	D2 Severe Drought
D0 Abnormally Dry	D3 Extreme Drought
D1 Moderate Drought	D4 Exceptional Drought

The Drought Monitor focuses on broad-scale conditions. Local conditions may vary. For more information on the Drought Monitor, go to <https://droughtmonitor.unl.edu/About.aspx>

Author:

Brad Rippey
 U.S. Department of Agriculture



droughtmonitor.unl.edu