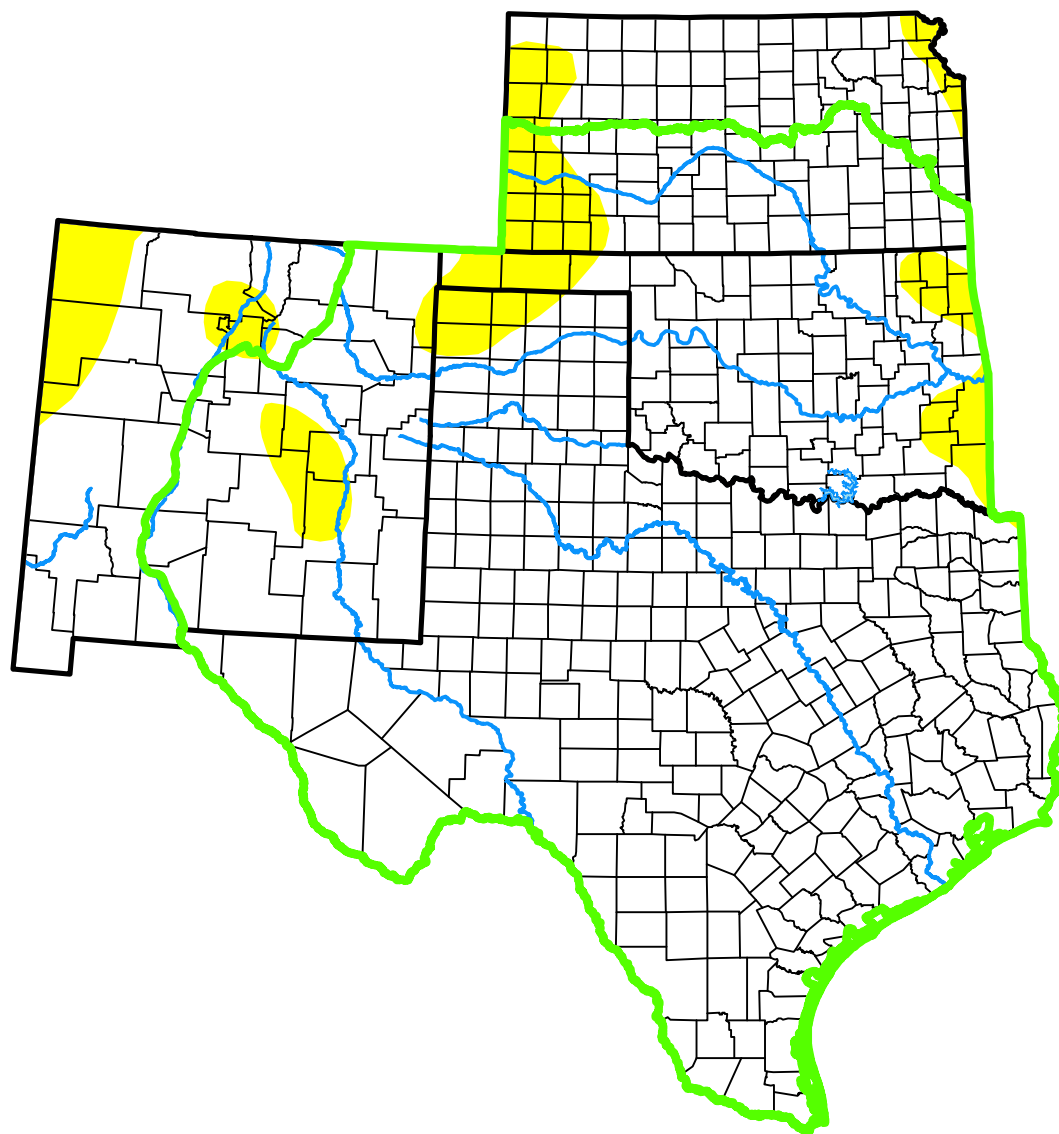


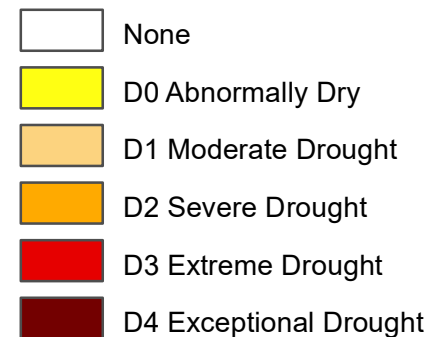
U.S. Drought Monitor

Southern Plains DEWS and Surrounding Areas

August 21, 2007
(Released Thursday, Aug. 23, 2007)
Valid 8 a.m. EDT



Intensity:



The Drought Monitor focuses on broad-scale conditions. Local conditions may vary. For more information on the Drought Monitor, go to <https://droughtmonitor.unl.edu/About.aspx>

Author:

Richard Heim
NCEI/NOAA



droughtmonitor.unl.edu