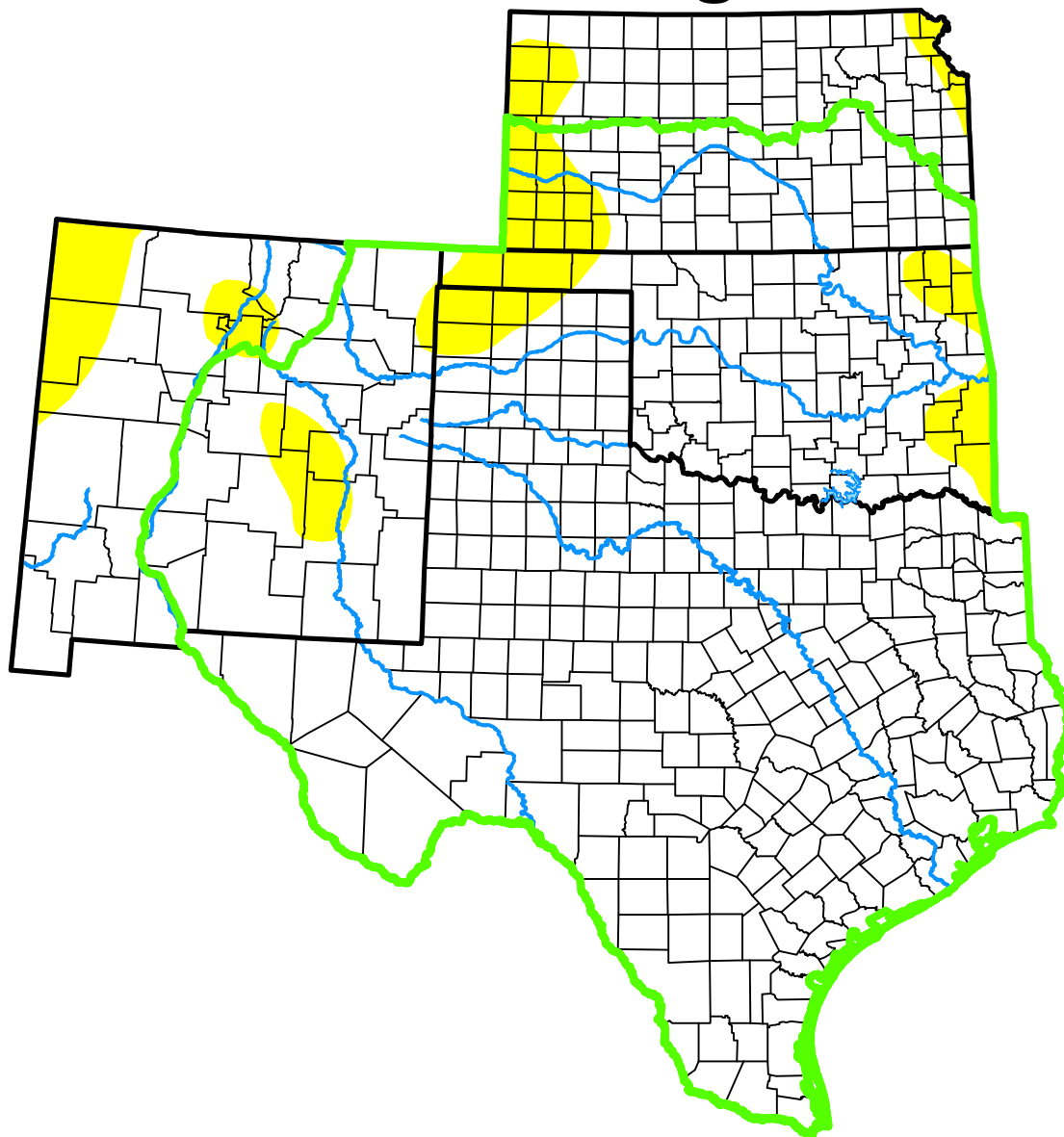


U.S. Drought Monitor

Southern Plains DEWS

and Surrounding Areas



August 21, 2007

(Released Thursday, Aug. 23, 2007)

Valid 8 a.m. EDT

Drought Conditions (Percent Area)

	None	D0-D4	D1-D4	D2-D4	D3-D4	D4
Current	92.81	7.19	0.00	0.00	0.00	0.00
Last Week <i>08-14-2007</i>	99.10	0.90	0.00	0.00	0.00	0.00
3 Months Ago <i>05-22-2007</i>	97.60	2.40	0.00	0.00	0.00	0.00
Start of Calendar Year <i>01-02-2007</i>	32.44	67.56	44.15	27.70	15.09	2.27
Start of Water Year <i>09-26-2006</i>	31.25	68.75	53.55	33.77	14.85	0.99
One Year Ago <i>08-22-2006</i>	9.68	90.32	75.00	59.45	35.75	10.88

(Statistics for area highlighted in green)

Intensity:

None	D2 Severe Drought
D0 Abnormally Dry	D3 Extreme Drought
D1 Moderate Drought	D4 Exceptional Drought

The Drought Monitor focuses on broad-scale conditions. Local conditions may vary. For more information on the Drought Monitor, go to <https://droughtmonitor.unl.edu/About.aspx>

Author:

Richard Heim
NCEI/NOAA



droughtmonitor.unl.edu