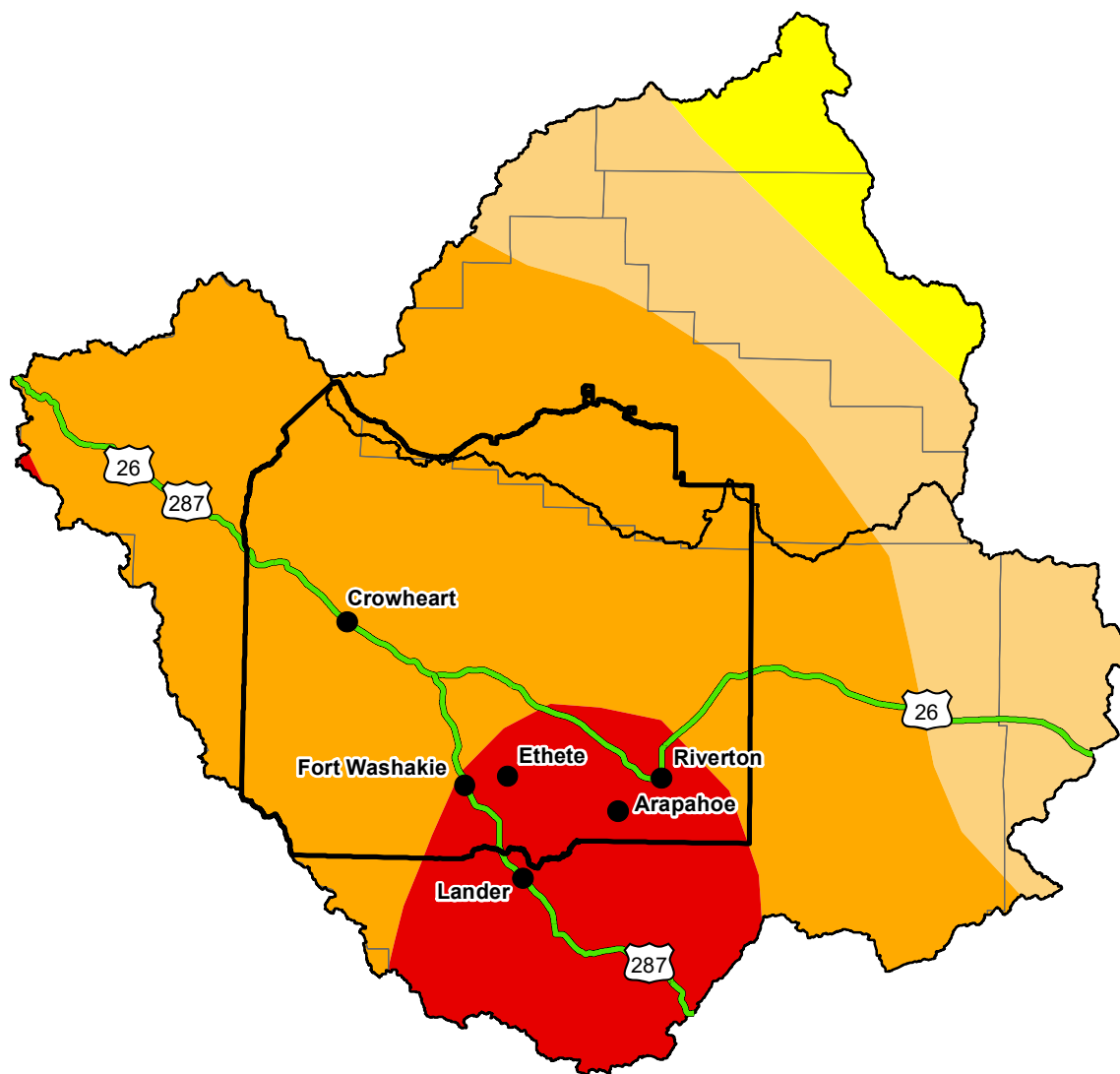


U.S. Drought Monitor

Wind River and Surrounding Area

August 21, 2007
 (Released Thursday, Aug. 23, 2007)
 Valid 8 a.m. EDT



Drought Conditions (Percent Area)

| | None | D0-D4 | D1-D4 | D2-D4 | D3-D4 | D4 |
|--|------|-------|-------|-------|-------|------|
| Current | 0.00 | 0.00 | 0.00 | 0.00 | 0.00 | 0.00 |
| Last Week <i>08-16-2007</i> | 0.00 | 0.00 | 0.00 | 0.00 | 0.00 | 0.00 |
| 3 Months Ago <i>05-24-2007</i> | 0.00 | 0.00 | 0.00 | 0.00 | 0.00 | 0.00 |
| Start of Calendar Year <i>01-04-2007</i> | 0.00 | 0.00 | 0.00 | 0.00 | 0.00 | 0.00 |
| Start of Water Year <i>09-28-2006</i> | 0.00 | 0.00 | 0.00 | 0.00 | 0.00 | 0.00 |
| One Year Ago <i>08-24-2006</i> | 0.00 | 0.00 | 0.00 | 0.00 | 0.00 | 0.00 |

Note: Statistics are for the surrounding area including the reservation.

Intensity:



The Drought Monitor focuses on broad-scale conditions. Local conditions may vary. For more information on the Drought Monitor, go to <https://droughtmonitor.unl.edu/About.aspx>

Author:

Richard Heim
 NCEI/NOAA



<http://droughtmonitor.unl.edu/>