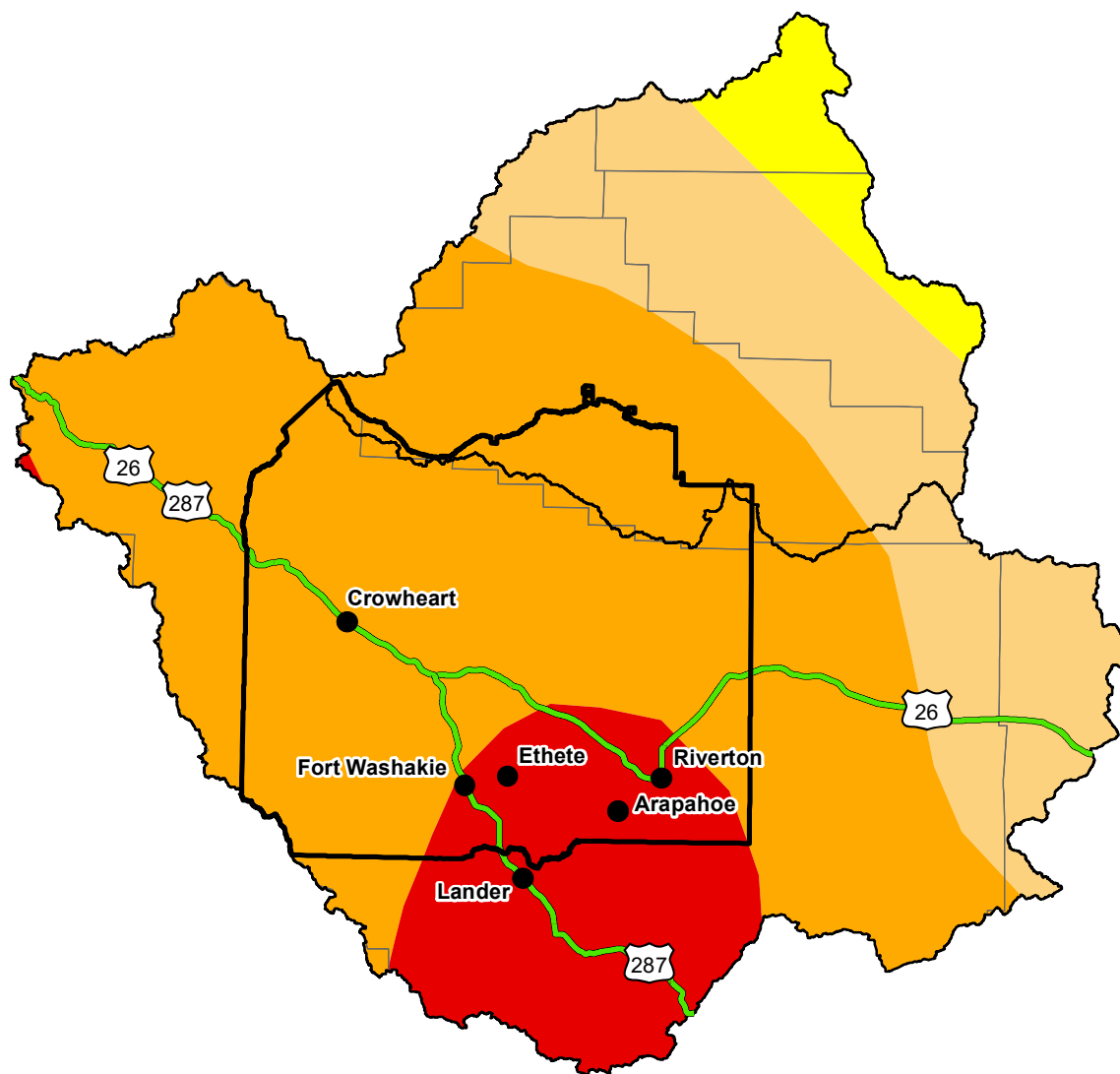


U.S. Drought Monitor

Wind River and Surrounding Area

August 28, 2007
 (Released Thursday, Aug. 30, 2007)
 Valid 8 a.m. EDT



Drought Conditions (Percent Area)

	None	D0-D4	D1-D4	D2-D4	D3-D4	D4
Current	0.00	0.00	0.00	0.00	0.00	0.00
Last Week 08-23-2007	0.00	0.00	0.00	0.00	0.00	0.00
3 Months Ago 05-31-2007	0.00	0.00	0.00	0.00	0.00	0.00
Start of Calendar Year 01-04-2007	0.00	0.00	0.00	0.00	0.00	0.00
Start of Water Year 09-28-2006	0.00	0.00	0.00	0.00	0.00	0.00
One Year Ago 08-31-2006	0.00	0.00	0.00	0.00	0.00	0.00

Note: Statistics are for the surrounding area including the reservation.

Intensity:



The Drought Monitor focuses on broad-scale conditions. Local conditions may vary. For more information on the Drought Monitor, go to <https://droughtmonitor.unl.edu/About.aspx>

Author:

Thomas Heddinghaus
 CPC/NOAA



<http://droughtmonitor.unl.edu/>