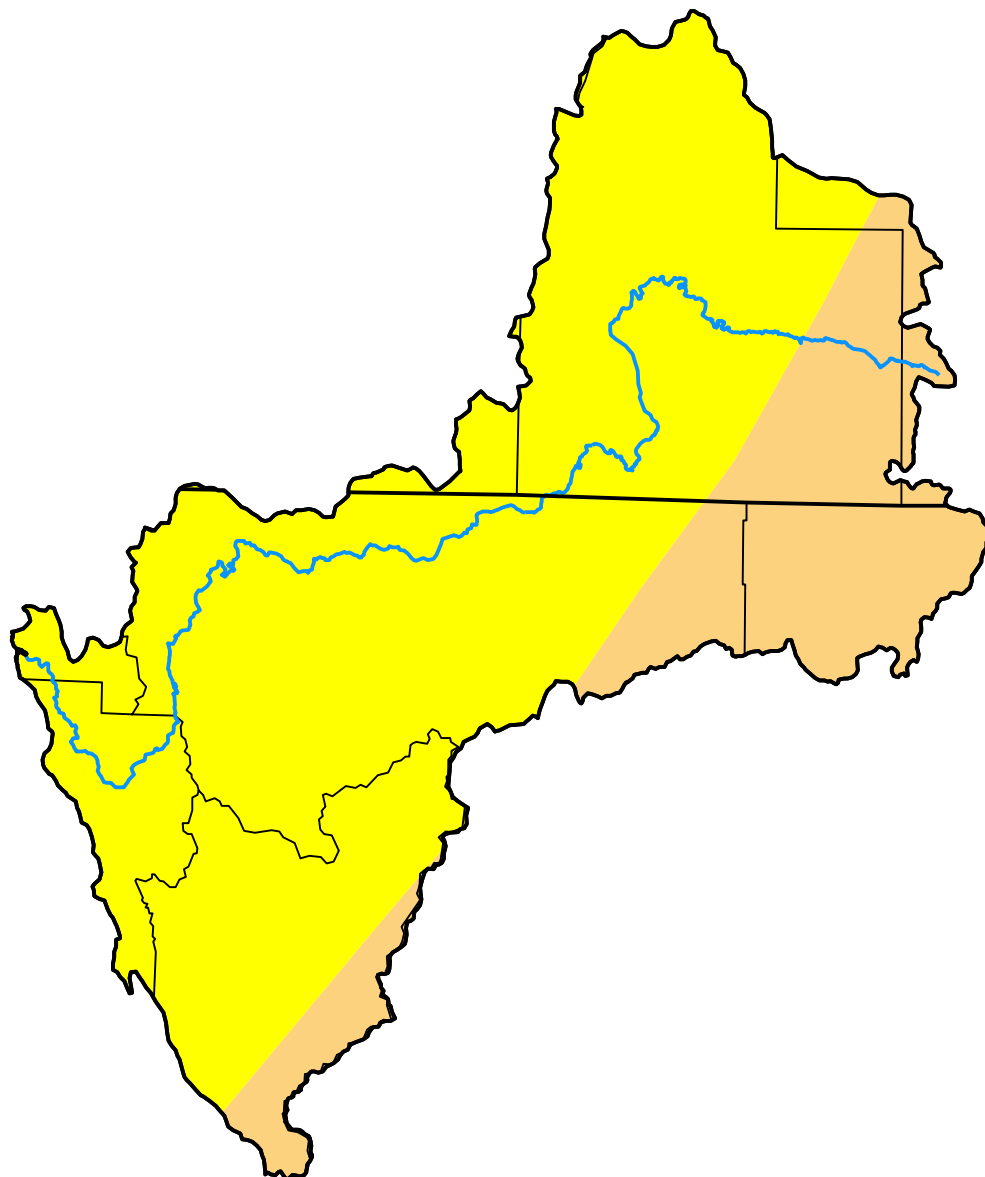


U.S. Drought Monitor Klamath River Basin

September 4, 2007
(Released Thursday, Sep. 6, 2007)
Valid 8 a.m. EDT



Intensity:



The Drought Monitor focuses on broad-scale conditions. Local conditions may vary. For more information on the Drought Monitor, go to <https://droughtmonitor.unl.edu/About.aspx>

Author:

Thomas Heddinghaus
CPC/NOAA



droughtmonitor.unl.edu