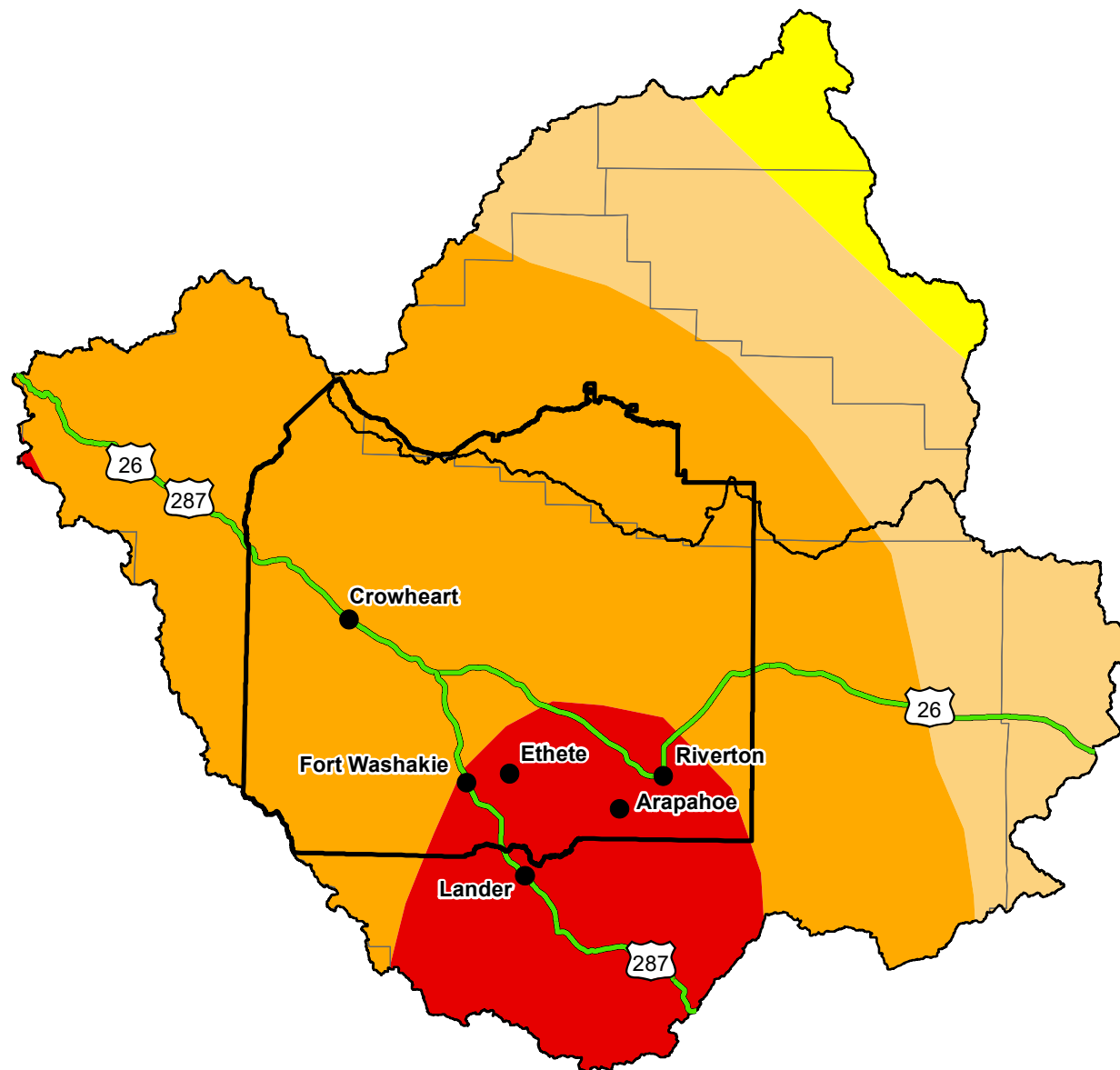


U.S. Drought Monitor

Wind River and Surrounding Area

September 4, 2007
(Released Thursday, Sep. 6, 2007)
Valid 8 a.m. EDT



Intensity:

-  D0 Abnormally Dry
-  D1 Moderate Drought
-  D2 Severe Drought
-  D3 Extreme Drought
-  D4 Exceptional Drought

The Drought Monitor focuses on broad-scale conditions. Local conditions may vary. For more information on the Drought Monitor, go to <https://droughtmonitor.unl.edu/About.aspx>

Author:

Thomas Heddinghaus
CPC/NOAA



<http://droughtmonitor.unl.edu/>