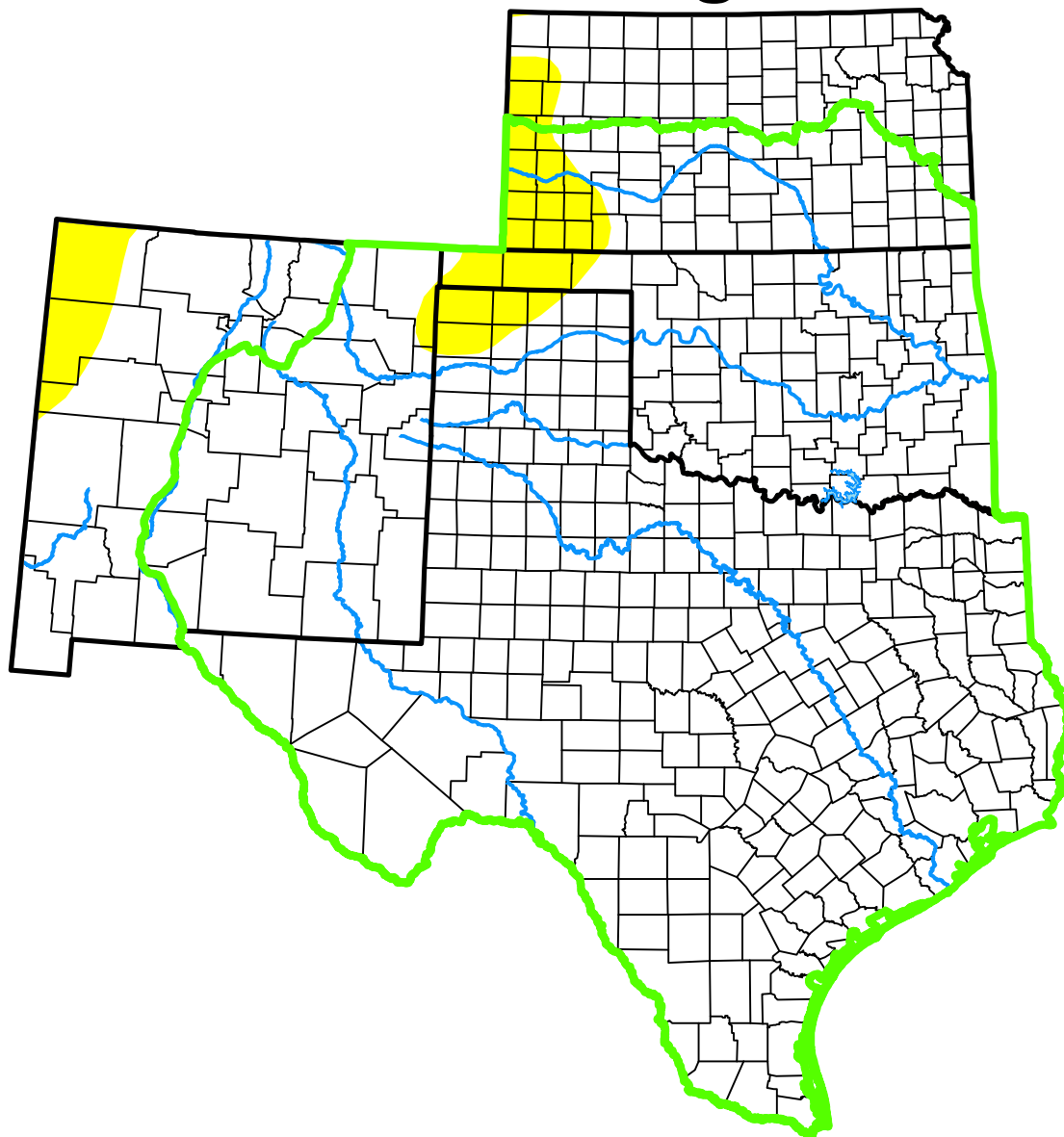


# U.S. Drought Monitor

## Southern Plains DEWS and Surrounding Areas



**September 11, 2007**  
(Released Thursday, Sep. 13, 2007)  
Valid 8 a.m. EDT

*Drought Conditions (Percent Area)*

	None	D0	D1	D2	D3	D4
<b>Current</b>	96.06	3.94	0.00	0.00	0.00	0.00
<b>Last Week</b> <i>09-04-2007</i>	93.52	6.48	0.00	0.00	0.00	0.00
<b>3 Months Ago</b> <i>06-12-2007</i>	98.09	1.91	0.00	0.00	0.00	0.00
<b>Start of Calendar Year</b> <i>01-02-2007</i>	32.44	23.41	16.45	12.61	12.81	2.27
<b>Start of Water Year</b> <i>09-26-2006</i>	31.25	15.20	19.78	18.91	13.87	0.99
<b>One Year Ago</b> <i>09-12-2006</i>	29.39	11.92	17.04	12.45	19.34	9.86

(Statistics for area highlighted in green)

### Intensity:

None	D2 Severe Drought
D0 Abnormally Dry	D3 Extreme Drought
D1 Moderate Drought	D4 Exceptional Drought

The Drought Monitor focuses on broad-scale conditions. Local conditions may vary. For more information on the Drought Monitor, go to <https://droughtmonitor.unl.edu/About.aspx>

### Author:

Richard Tinker  
CPC/NOAA/NWS/NCEP



[droughtmonitor.unl.edu](https://droughtmonitor.unl.edu)