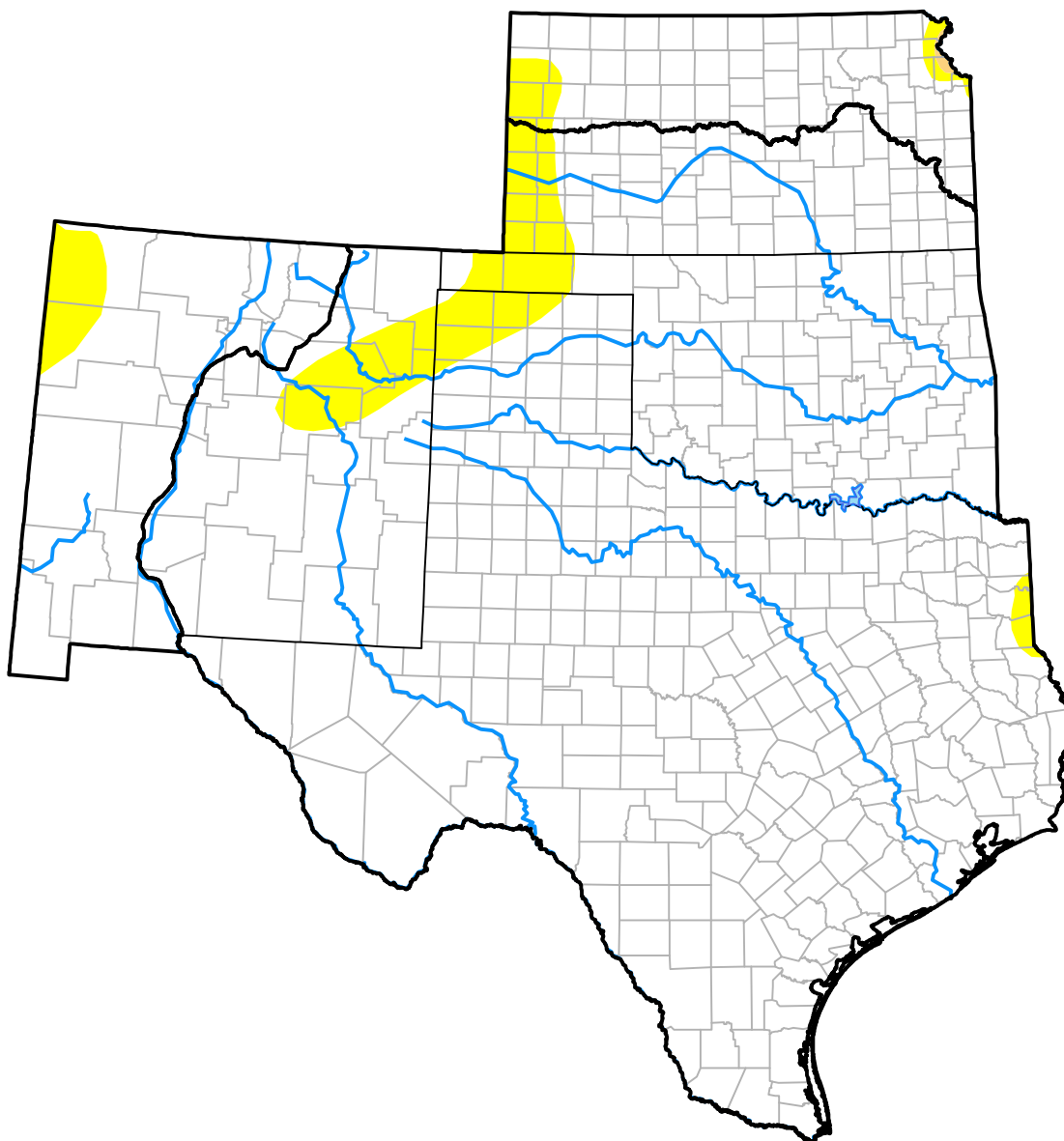


# U.S. Drought Monitor

## Southern Plains RDEWS

October 2, 2007  
(Released Thursday, Oct. 4, 2007)  
Valid 8 a.m. EDT



### Intensity:



*The Drought Monitor focuses on broad-scale conditions. Local conditions may vary. For more information on the Drought Monitor, go to <https://droughtmonitor.unl.edu/About.aspx>*

### Author:

Jay Lawrimore  
NOAA/NESDIS/NCEI



[droughtmonitor.unl.edu](https://droughtmonitor.unl.edu)