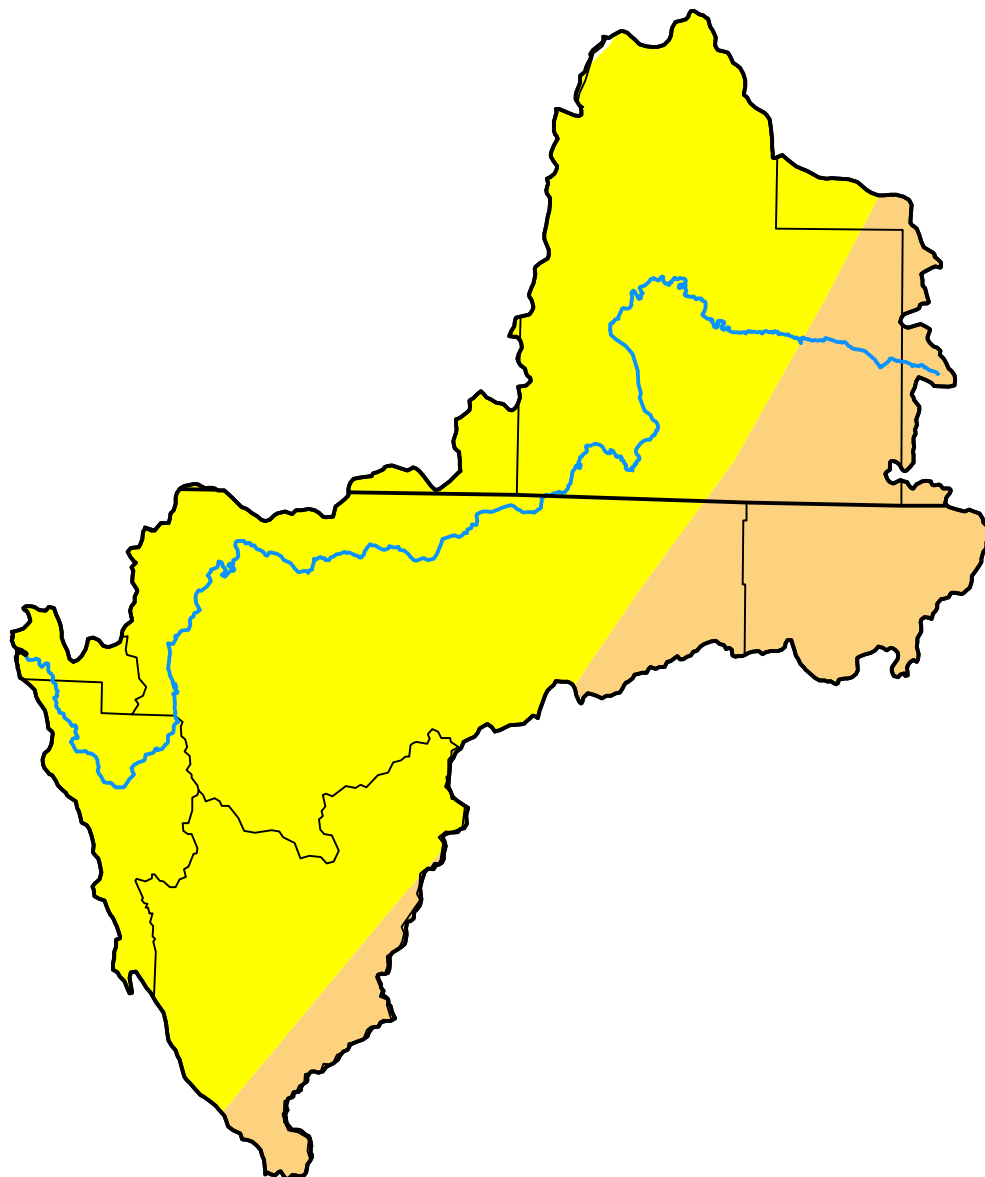


U.S. Drought Monitor Klamath River Basin

October 9, 2007
(Released Thursday, Oct. 11, 2007)
Valid 8 a.m. EDT



Intensity:



The Drought Monitor focuses on broad-scale conditions. Local conditions may vary. For more information on the Drought Monitor, go to <https://droughtmonitor.unl.edu/About.aspx>

Author:

Jay Lawrimore
NOAA/NESDIS/NCEI



droughtmonitor.unl.edu