

U.S. Drought Monitor

Wind River and Surrounding Area

October 16, 2007

(Released Thursday, Oct. 18, 2007)

Valid 8 a.m. EDT

Drought Conditions (Percent Area)

| | None | D0-D4 | D1-D4 | D2-D4 | D3-D4 | D4 |
|---|------|-------|-------|-------|-------|------|
| Current | 0.00 | 0.00 | 0.00 | 0.00 | 0.00 | 0.00 |
| Last Week 10-11-2007 | 0.00 | 0.00 | 0.00 | 0.00 | 0.00 | 0.00 |
| 3 Months Ago 07-19-2007 | 0.00 | 0.00 | 0.00 | 0.00 | 0.00 | 0.00 |
| Start of Calendar Year 01-04-2007 | 0.00 | 0.00 | 0.00 | 0.00 | 0.00 | 0.00 |
| Start of Water Year 09-27-2007 | 0.00 | 0.00 | 0.00 | 0.00 | 0.00 | 0.00 |
| One Year Ago 10-19-2006 | 0.00 | 0.00 | 0.00 | 0.00 | 0.00 | 0.00 |

Note: Statistics are for the surrounding area including the reservation.

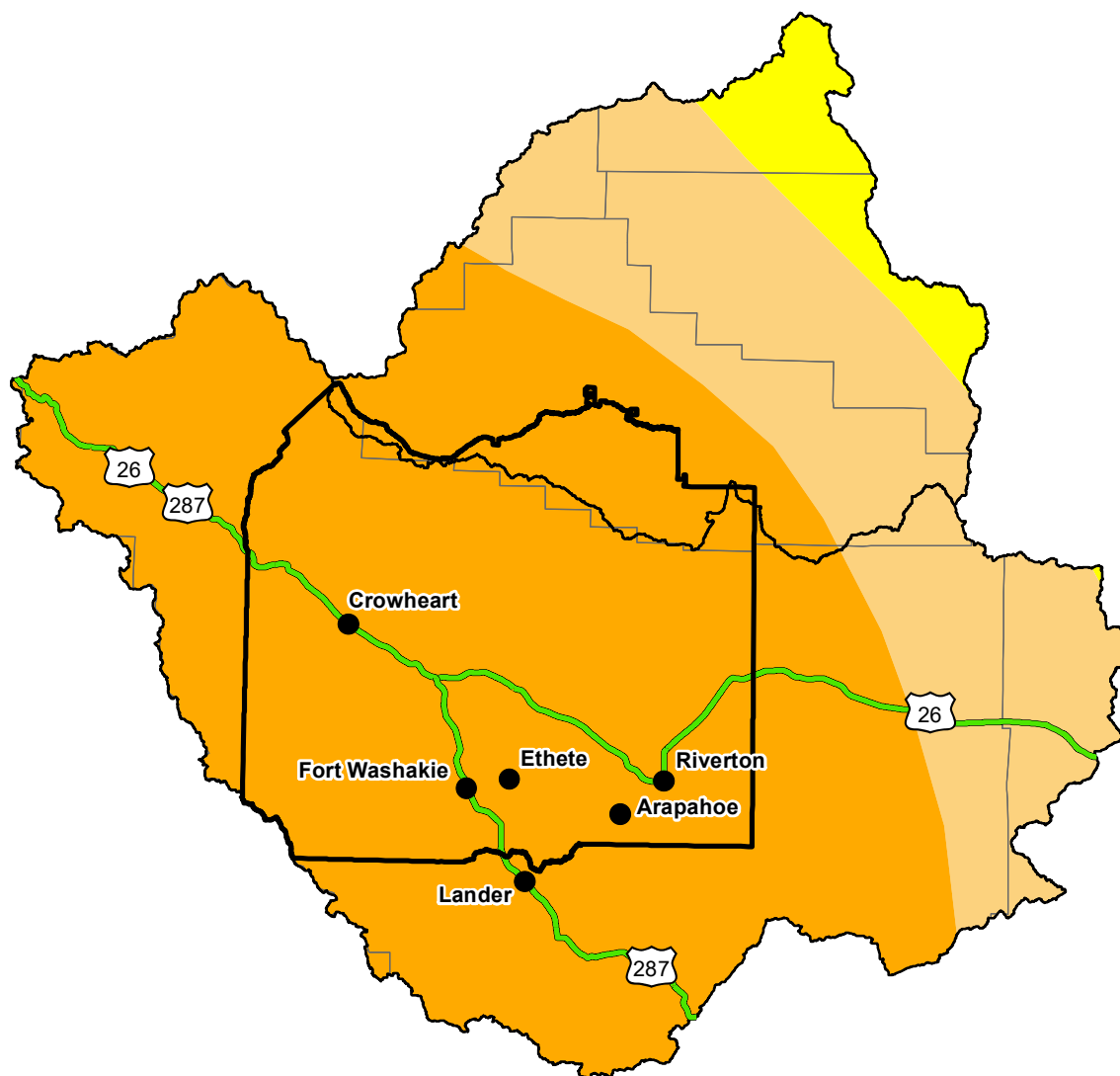
Intensity:

| | |
|---|--|
|  None |  D2 Severe Drought |
|  D0 Abnormally Dry |  D3 Extreme Drought |
|  D1 Moderate Drought |  D4 Exceptional Drought |

The Drought Monitor focuses on broad-scale conditions. Local conditions may vary. For more information on the Drought Monitor, go to <https://droughtmonitor.unl.edu/About.aspx>

Author:

Mark Svoboda
National Drought Mitigation Center



<http://droughtmonitor.unl.edu/>