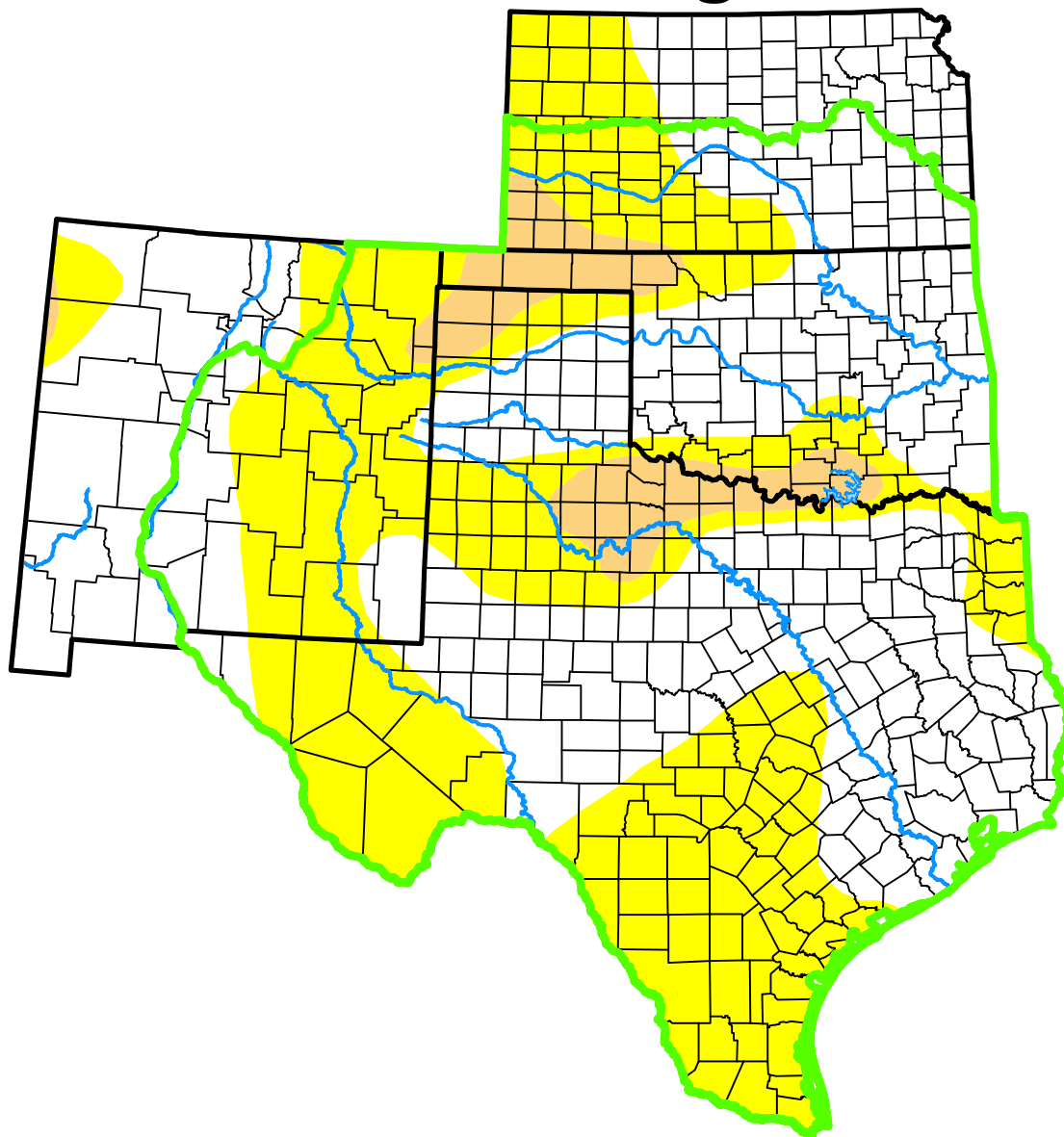


# U.S. Drought Monitor

## Southern Plains DEWS and Surrounding Areas



**December 11, 2007**

*(Released Thursday, Dec. 13, 2007)*

Valid 7 a.m. EST

*Drought Conditions (Percent Area)*

	None	D0-D4	D1-D4	D2-D4	D3-D4	D4
<b>Current</b>	48.47	51.53	7.24	0.00	0.00	0.00
<b>Last Week</b> <i>12-04-2007</i>	43.77	56.23	7.24	0.00	0.00	0.00
<b>3 Months Ago</b> <i>09-11-2007</i>	96.06	3.94	0.00	0.00	0.00	0.00
<b>Start of Calendar Year</b> <i>01-02-2007</i>	32.44	67.56	44.15	27.70	15.09	2.27
<b>Start of Water Year</b> <i>09-25-2007</i>	95.21	4.79	0.00	0.00	0.00	0.00
<b>One Year Ago</b> <i>12-12-2006</i>	30.87	69.13	50.82	32.77	15.98	4.17

(Statistics for area highlighted in green)

### Intensity:

None	D2 Severe Drought
D0 Abnormally Dry	D3 Extreme Drought
D1 Moderate Drought	D4 Exceptional Drought

*The Drought Monitor focuses on broad-scale conditions. Local conditions may vary. For more information on the Drought Monitor, go to <https://droughtmonitor.unl.edu/About.aspx>*

### Author:

Brian Fuchs  
National Drought Mitigation Center



**droughtmonitor.unl.edu**