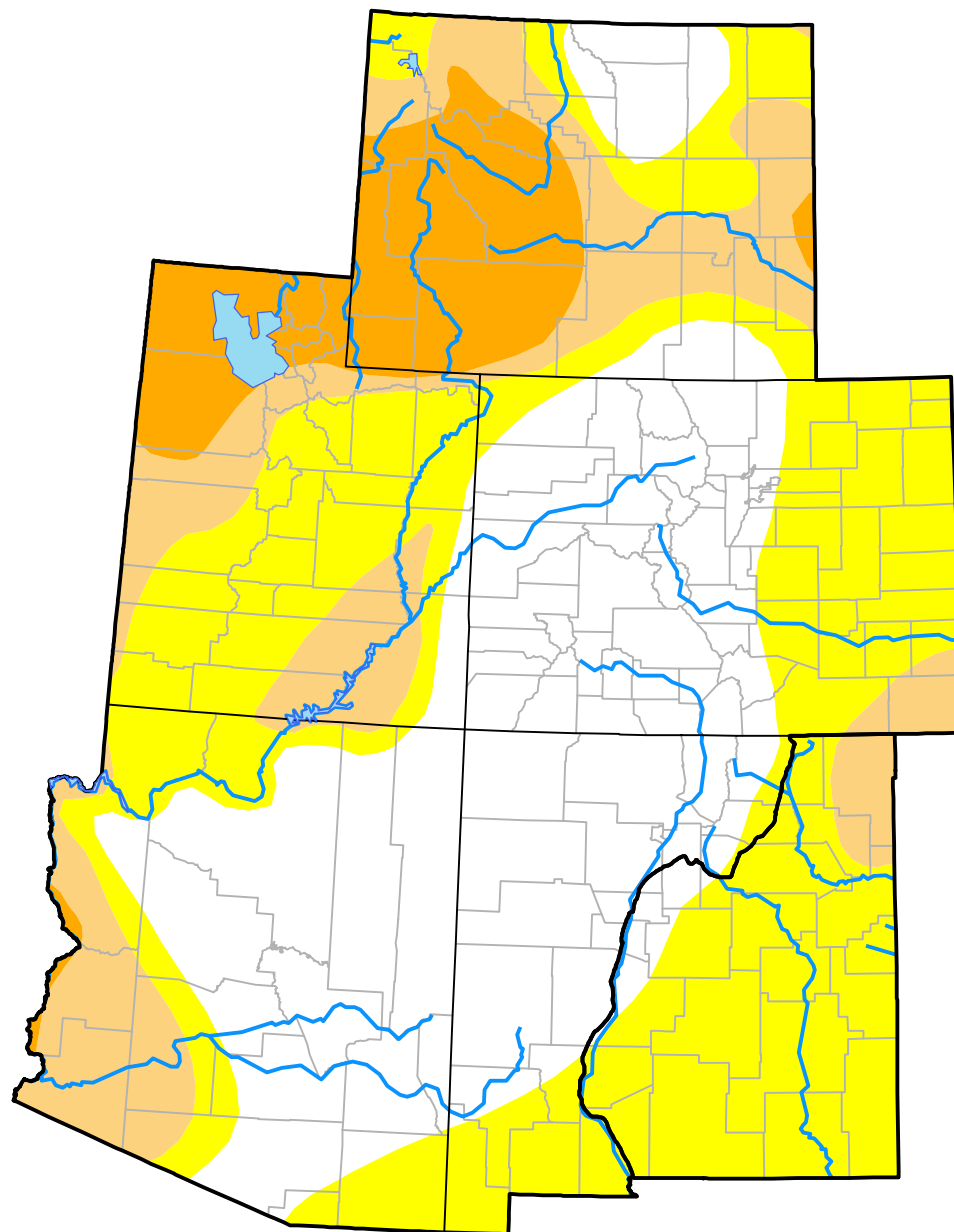


U.S. Drought Monitor

Intermountain West RDEWS

February 26, 2008
 (Released Thursday, Feb. 28, 2008)
 Valid 7 a.m. EST



Drought Conditions (Percent Area)

	None	D0-D4	D1-D4	D2-D4	D3-D4	D4
Current	38.03	61.97	25.22	9.88	0.00	0.00
Last Week <i>02-21-2008</i>	38.04	61.96	25.22	9.88	0.00	0.00
3 Months Ago <i>11-29-2007</i>	33.60	66.40	45.65	26.18	5.93	0.00
Start of Calendar Year <i>01-03-2008</i>	34.93	65.07	38.24	22.70	0.00	0.00
Start of Water Year <i>09-27-2007</i>	37.58	62.42	43.04	26.29	6.69	0.00
One Year Ago <i>03-01-2007</i>	36.08	63.92	37.10	26.10	8.47	0.00

Intensity:

None	D2 Severe Drought
D0 Abnormally Dry	D3 Extreme Drought
D1 Moderate Drought	D4 Exceptional Drought

The Drought Monitor focuses on broad-scale conditions. Local conditions may vary. For more information on the Drought Monitor, go to <https://droughtmonitor.unl.edu/About.aspx>

Author:

Brad Rippey
 U.S. Department of Agriculture



droughtmonitor.unl.edu