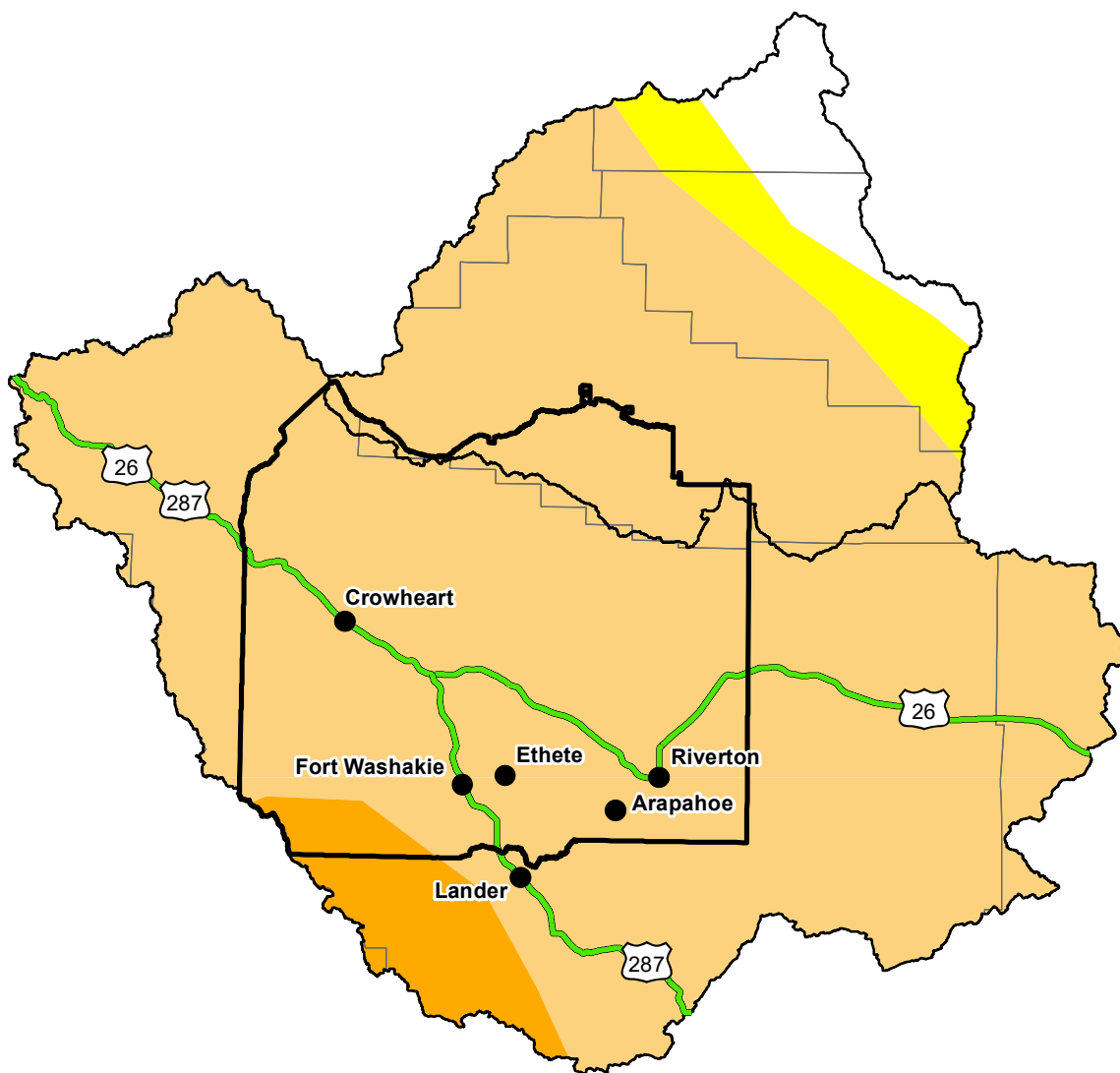


U.S. Drought Monitor

Wind River and Surrounding Area

April 29, 2008
 (Released Thursday, May. 1, 2008)
 Valid 8 a.m. EDT



Drought Conditions (Percent Area)

	None	D0	D1	D2	D3	D4
Current	0.00	0.00	0.00	0.00	0.00	0.00
Last Week <i>04-24-2008</i>	0.00	0.00	0.00	0.00	0.00	0.00
3 Months Ago <i>01-31-2008</i>	0.00	0.00	0.00	0.00	0.00	0.00
Start of Calendar Year <i>01-03-2008</i>	0.00	0.00	0.00	0.00	0.00	0.00
Start of Water Year <i>09-27-2007</i>	0.00	0.00	0.00	0.00	0.00	0.00
One Year Ago <i>05-03-2007</i>	0.00	0.00	0.00	0.00	0.00	0.00

Note: Statistics are for the surrounding area including the reservation.

Intensity:

- None
- D0 Abnormally Dry
- D1 Moderate Drought
- D2 Severe Drought
- D3 Extreme Drought
- D4 Exceptional Drought

The Drought Monitor focuses on broad-scale conditions. Local conditions may vary. For more information on the Drought Monitor, go to <https://droughtmonitor.unl.edu/About.aspx>

Author:

Richard Heim
 NCEI/NOAA

