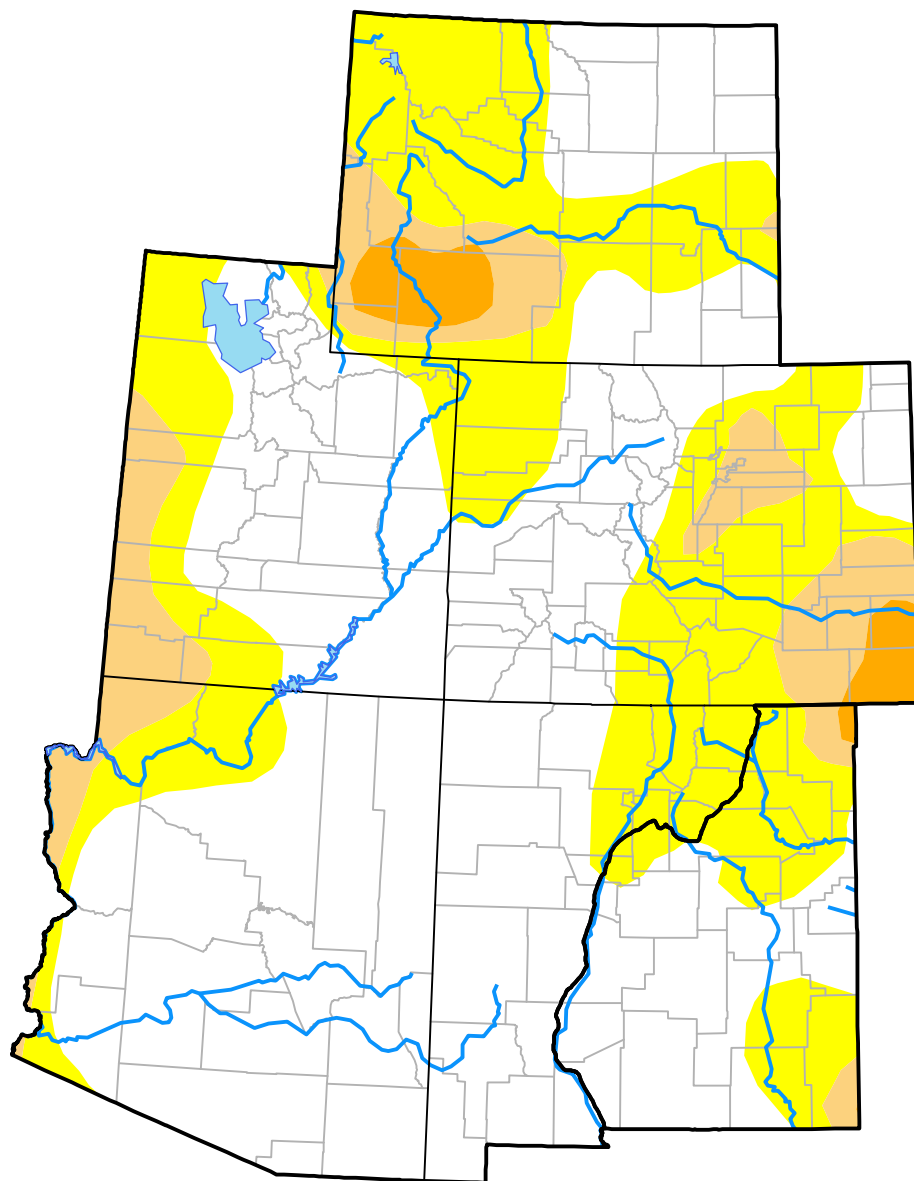


U.S. Drought Monitor

Intermountain West RDEWS

September 2, 2008
(Released Thursday, Sep. 4, 2008)
Valid 8 a.m. EDT



Intensity:

-  None
-  D0 Abnormally Dry
-  D1 Moderate Drought
-  D2 Severe Drought
-  D3 Extreme Drought
-  D4 Exceptional Drought

The Drought Monitor focuses on broad-scale conditions. Local conditions may vary. For more information on the Drought Monitor, go to <https://droughtmonitor.unl.edu/About.aspx>

Author:

Jay Lawrimore
NOAA/NESDIS/NCEI



droughtmonitor.unl.edu