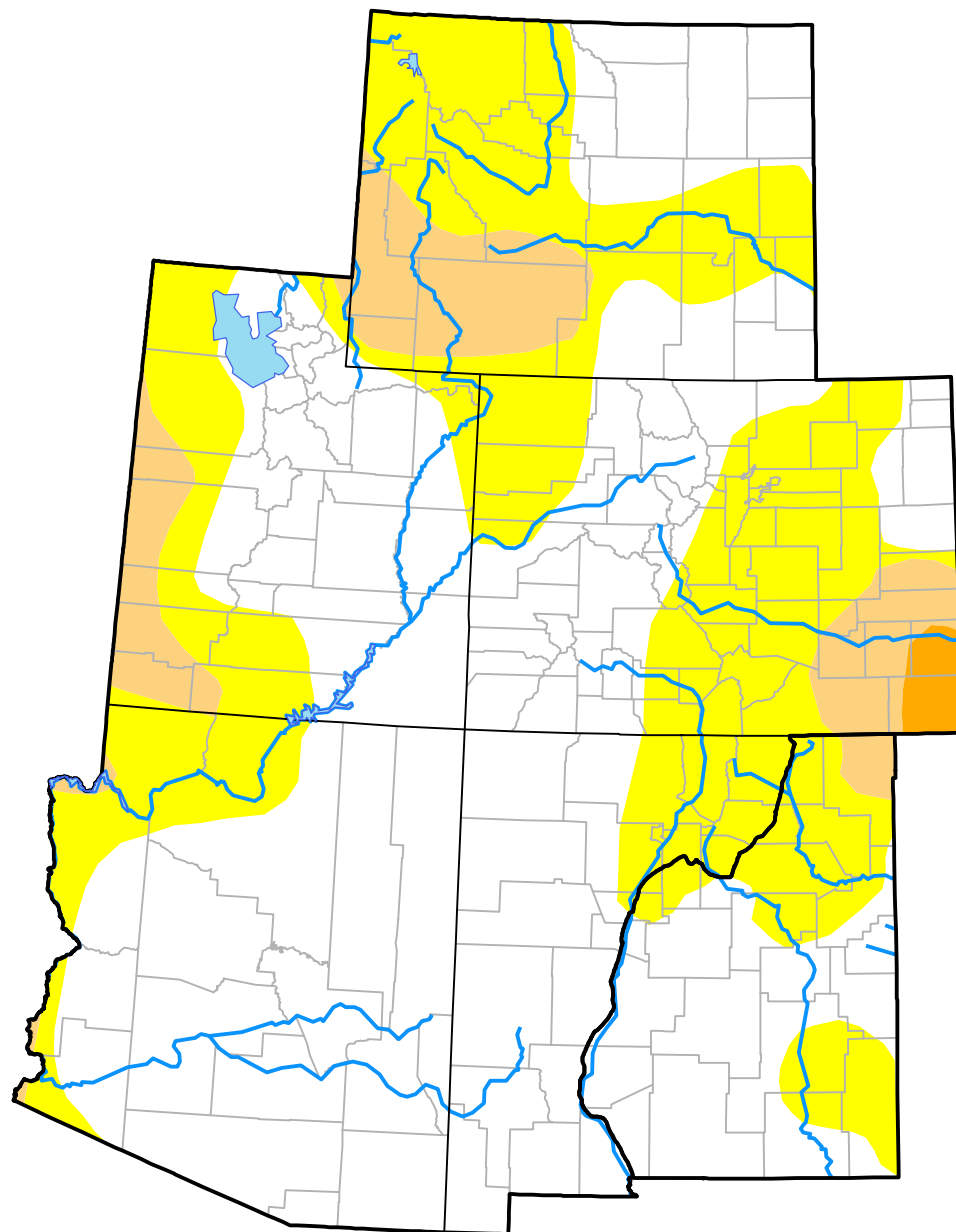


# U.S. Drought Monitor

## Intermountain West RDEWS

**October 7, 2008**  
*(Released Thursday, Oct. 9, 2008)*  
 Valid 8 a.m. EDT



*Drought Conditions (Percent Area)*

	None	D0-D4	D1-D4	D2-D4	D3-D4	D4
<b>Current</b>	59.73	40.27	8.53	0.67	0.00	0.00
<b>Last Week</b> <i>10-02-2008</i>	59.73	40.27	9.16	0.67	0.00	0.00
<b>3 Months Ago</b> <i>07-10-2008</i>	45.15	54.85	25.96	11.64	3.78	0.24
<b>Start of Calendar Year</b> <i>01-03-2008</i>	34.93	65.07	38.24	22.70	0.00	0.00
<b>Start of Water Year</b> <i>10-02-2008</i>	59.73	40.27	9.16	0.67	0.00	0.00
<b>One Year Ago</b> <i>10-11-2007</i>	42.16	57.84	41.23	26.07	6.07	0.00

### Intensity:

None	D2 Severe Drought
D0 Abnormally Dry	D3 Extreme Drought
D1 Moderate Drought	D4 Exceptional Drought

*The Drought Monitor focuses on broad-scale conditions. Local conditions may vary. For more information on the Drought Monitor, go to <https://droughtmonitor.unl.edu/About.aspx>*

### Author:

Laura Edwards  
 Western Regional Climate Center



**droughtmonitor.unl.edu**