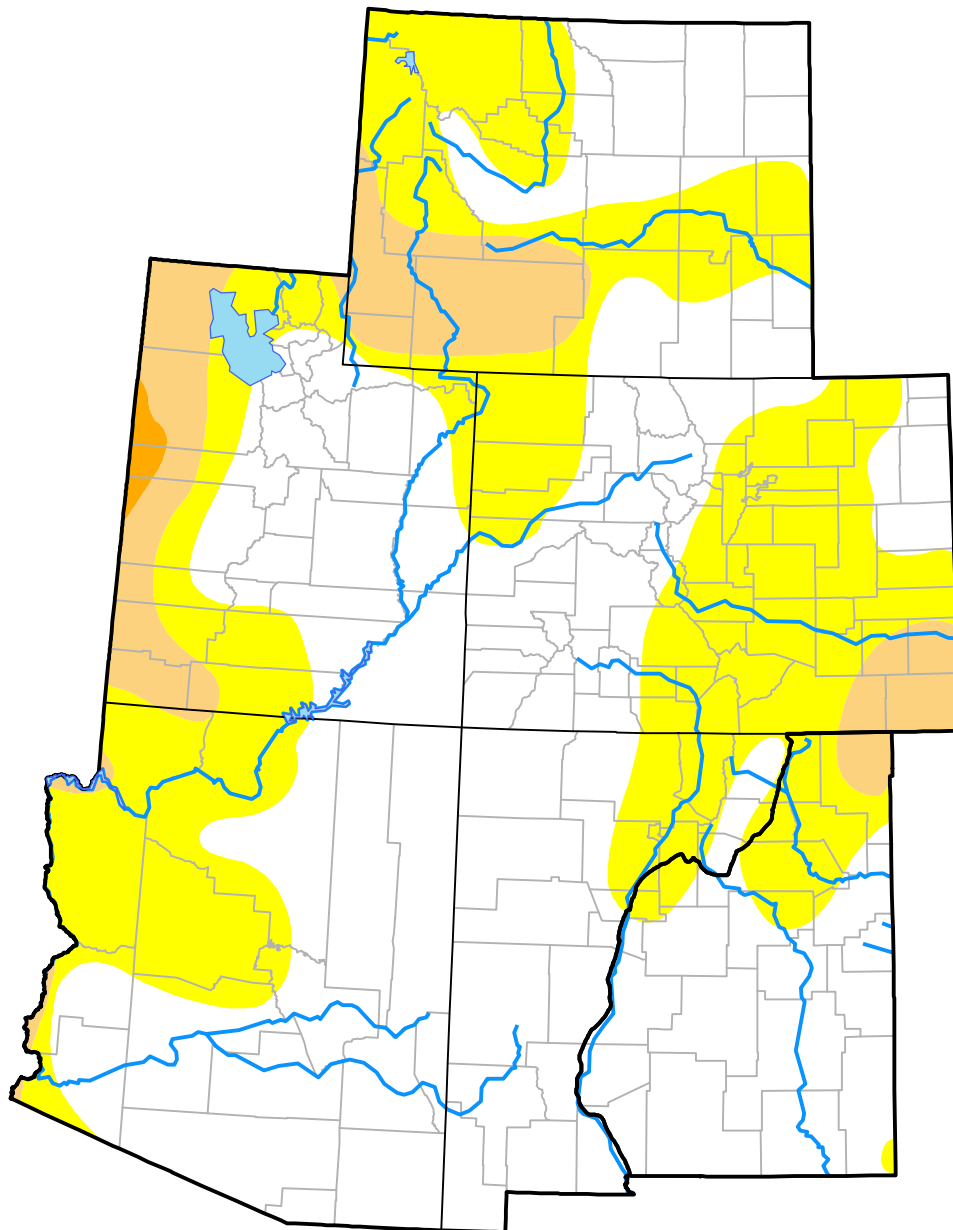


U.S. Drought Monitor

Intermountain West RDEWS

October 21, 2008
 (Released Thursday, Oct. 23, 2008)
 Valid 8 a.m. EDT



Drought Conditions (Percent Area)

	None	D0	D1	D2	D3	D4
Current	58.46	32.95	8.25	0.34	0.00	0.00
Last Week <i>10-16-2008</i>	62.88	30.02	7.09	0.00	0.00	0.00
3 Months Ago <i>07-24-2008</i>	52.88	33.64	9.27	3.24	0.81	0.17
Start of Calendar Year <i>01-03-2008</i>	34.93	26.83	15.54	22.70	0.00	0.00
Start of Water Year <i>10-02-2008</i>	59.73	31.12	8.49	0.67	0.00	0.00
One Year Ago <i>10-25-2007</i>	40.68	18.12	15.38	19.86	5.97	0.00

Intensity:

- None
- D0 Abnormally Dry
- D1 Moderate Drought
- D2 Severe Drought
- D3 Extreme Drought
- D4 Exceptional Drought

The Drought Monitor focuses on broad-scale conditions. Local conditions may vary. For more information on the Drought Monitor, go to <https://droughtmonitor.unl.edu/About.aspx>

Author:

Richard Tinker
 CPC/NOAA/NWS/NCEP

