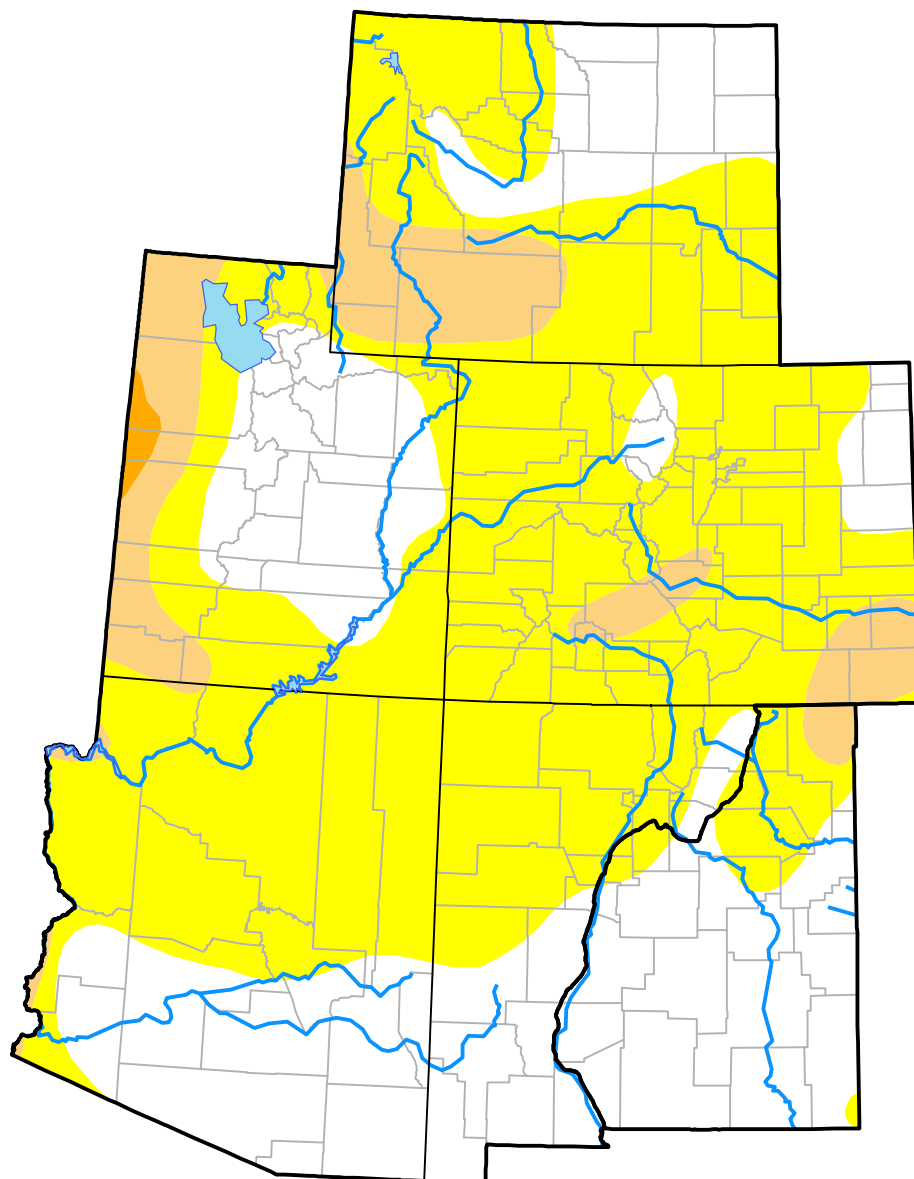


# U.S. Drought Monitor

## Intermountain West RDEWS

**December 16, 2008**  
(Released Thursday, Dec. 18, 2008)  
Valid 7 a.m. EST



### Intensity:



*The Drought Monitor focuses on broad-scale conditions. Local conditions may vary. For more information on the Drought Monitor, go to <https://droughtmonitor.unl.edu/About.aspx>*

### Author:

Jay Lawrimore  
NOAA/NESDIS/NCEI



**droughtmonitor.unl.edu**