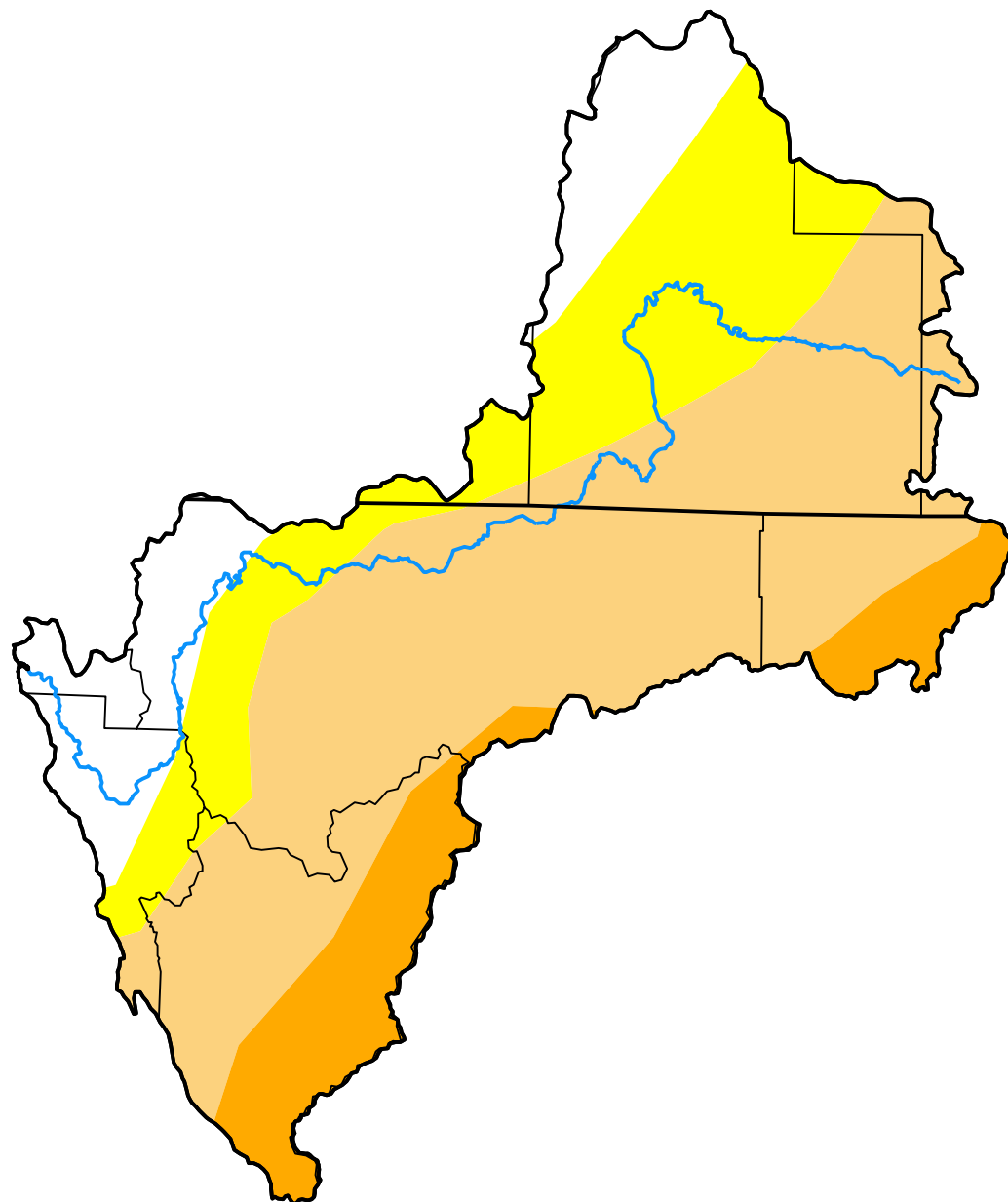


U.S. Drought Monitor Klamath River Basin

January 20, 2009
(Released Thursday, Jan. 22, 2009)
Valid 7 a.m. EST



Drought Conditions (Percent Area)

	None	D0-D4	D1-D4	D2-D4	D3-D4	D4
Current	14.20	85.80	63.03	12.09	0.00	0.00
Last Week <i>01-13-2009</i>	14.20	85.80	63.03	7.41	0.00	0.00
3 Months Ago <i>10-21-2008</i>	0.78	99.22	54.49	20.95	0.00	0.00
Start of Calendar Year <i>12-30-2008</i>	8.39	91.61	63.03	7.41	0.00	0.00
Start of Water Year <i>09-30-2008</i>	0.00	100.00	55.48	23.69	0.00	0.00
One Year Ago <i>01-22-2008</i>	80.43	19.57	7.25	0.00	0.00	0.00

Intensity:

None	D2 Severe Drought
D0 Abnormally Dry	D3 Extreme Drought
D1 Moderate Drought	D4 Exceptional Drought

The Drought Monitor focuses on broad-scale conditions. Local conditions may vary. For more information on the Drought Monitor, go to <https://droughtmonitor.unl.edu/About.aspx>

Author:

Laura Edwards
Western Regional Climate Center



droughtmonitor.unl.edu