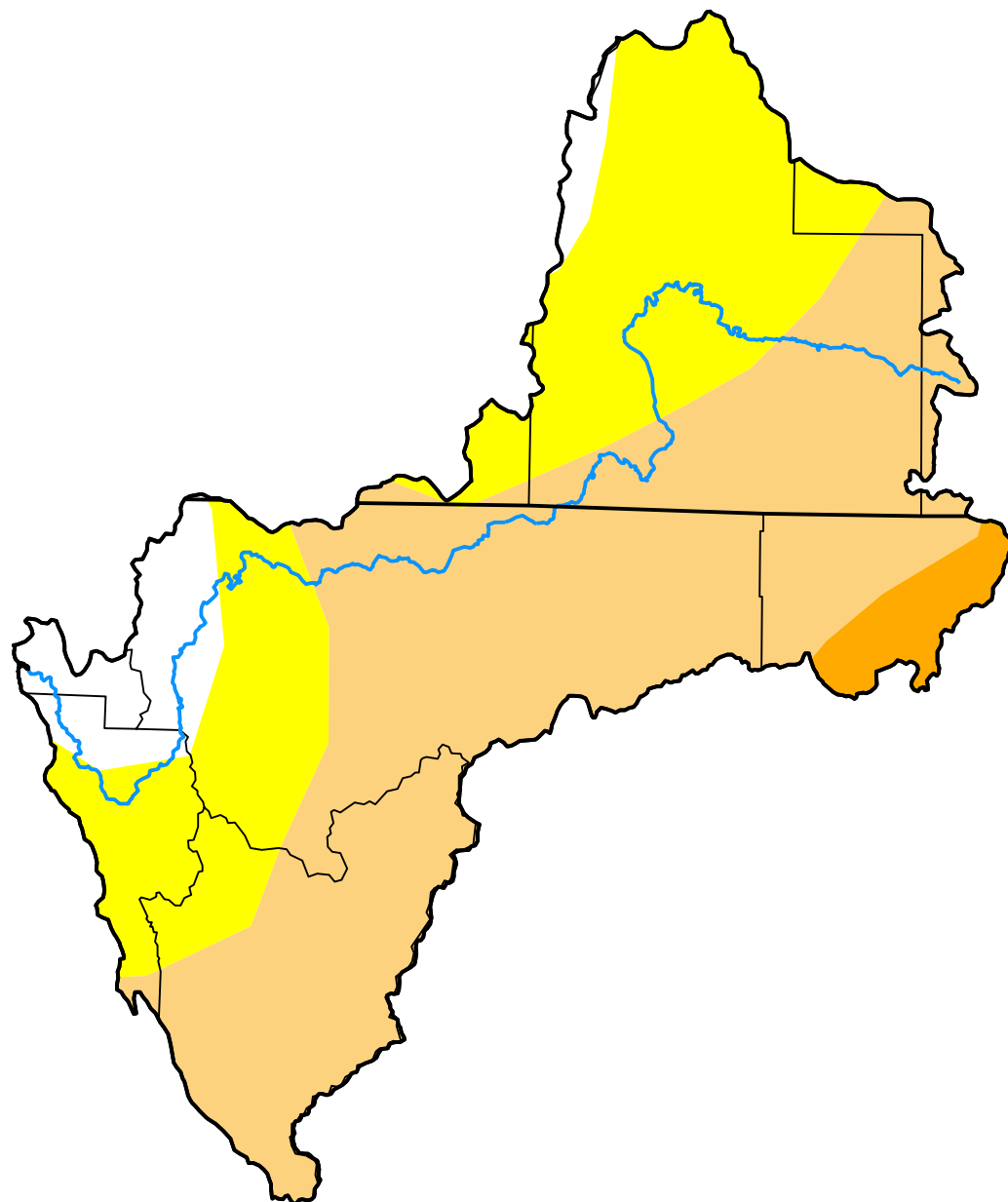


# U.S. Drought Monitor Klamath River Basin

**March 17, 2009**  
(Released Thursday, Mar. 19, 2009)  
Valid 8 a.m. EDT



*Drought Conditions (Percent Area)*

	None	D0-D4	D1-D4	D2-D4	D3-D4	D4
<b>Current</b>	7.64	92.36	58.44	3.16	0.00	0.00
<b>Last Week</b> <i>03-10-2009</i>	7.64	92.36	58.44	3.16	0.00	0.00
<b>3 Months Ago</b> <i>12-16-2008</i>	0.00	100.00	76.32	7.41	0.60	0.00
<b>Start of Calendar Year</b> <i>12-30-2008</i>	8.39	91.61	63.03	7.41	0.00	0.00
<b>Start of Water Year</b> <i>09-30-2008</i>	0.00	100.00	55.48	23.69	0.00	0.00
<b>One Year Ago</b> <i>03-18-2008</i>	84.45	15.55	4.43	0.52	0.00	0.00

## Intensity:

None	D2 Severe Drought
D0 Abnormally Dry	D3 Extreme Drought
D1 Moderate Drought	D4 Exceptional Drought

*The Drought Monitor focuses on broad-scale conditions. Local conditions may vary. For more information on the Drought Monitor, go to <https://droughtmonitor.unl.edu/About.aspx>*

## Author:

Laura Edwards  
Western Regional Climate Center



**droughtmonitor.unl.edu**