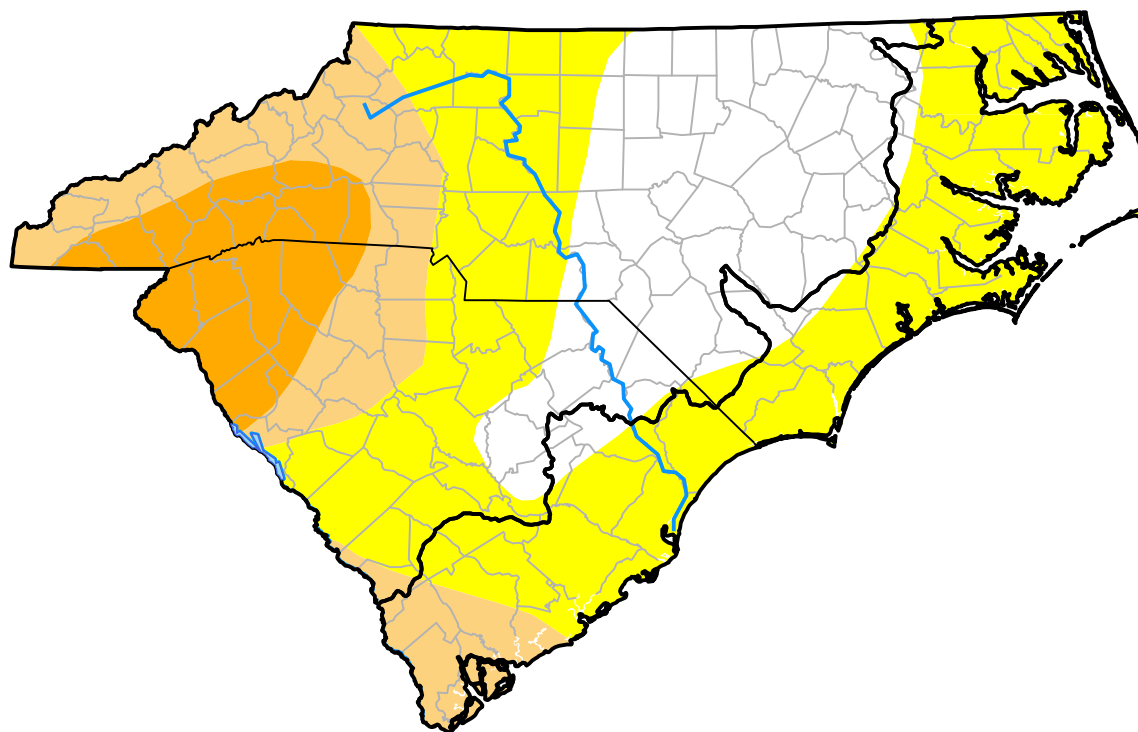


Carolinas RDEWS and Surrounding Areas

(Released Thursday, Mar. 26, 2009)

11:00 a.m. EDT



Drought Conditions (Percent Area)

	None	D0-D4	D1-D4	D2-D4	D3-D4	D4
Current	28.40	71.60	27.35	10.58	0.00	0.00
Last Week 03-19-2009	27.17	72.83	27.35	11.08	3.40	0.00
3 Months Ago 12-24-2008	68.75	31.25	18.87	12.43	8.78	0.00
Start of Calendar Year 01-01-2009	75.59	24.41	18.87	10.18	4.43	0.00
Start of Water Year 10-02-2008	35.46	64.54	48.13	26.60	16.97	6.66
One Year Ago 03-27-2008	1.62	98.38	80.62	55.37	26.84	0.00

Intensity:

None	D2 Severe Drought
D0 Abnormally Dry	D3 Extreme Drought
D1 Moderate Drought	D4 Exceptional Drought

The Drought Monitor focuses on broad-scale conditions. Local conditions may vary. For more information on the Drought Monitor, go to <https://droughtmonitor.unl.edu/About.aspx>

Author:

Brad Rippey
U.S. Department of Agriculture

